



# DUKE WOMEN'S BASKETBALL

NCAA Final Four - 1999, 2002, 2003, 2006

NCAA Finalist - 1999, 2006

ACC Champions - 2000, 2001, 2002, 2003, 2004, 2010, 2011, 2013

Lindy Brown, Senior Associate SID • Women's Basketball Contact • Office: 919-684-2664 • Cell: 919-599-9821 • lindy.brown@duke.edu  
www.GoDuke.com • Twitter - @DukeWBB, @CoachPDuke • Facebook - DukeWBB • Instagram - DukeWBB

## 2017-18 SCHEDULE (7-2 Overall, 0-0 ACC)

Date	DU	Opp	Opponent	Time/Results	WATCH
N12	12/12	--	at Grand Canyon	W, 74-61	ESPN3
N16	11/12	--	HIGH POINT	W, 77-50	ACCN Extra
N19	11/12	--	at Villanova	L, 55-64	Nova Nation
N22	16/17	--	at Old Dominion	W, 84-51	ESPN3
N25	16/17	17/18	OREGON STATE	W, 72-65	ACCN Extra
N26	16/17	--	PRESBYTERIAN	W, 79-45	ACCN Extra

Big Ten/ACC Challenge (Durham, N.C.)					
N30	14/16	8/8	OHIO STATE	W, 69-60	ESPN2

D3	14/16	5/6	at South Carolina	L, 52-72	SEC Network
D7	14/14	--	UNC GREENSBORO	W, 85-54	ACCN Extra
D10	14/14	--	WINTHROP	2:00 PM	ACCN Extra
D19	--	--	MAINE	7:00 PM	ACCN Extra
D21	--	--	WYOMING	7:00 PM	ACCN Extra
D29	--	--	LIBERTY	7:00 PM	ACCN Extra
D31	--	--	at Miami*	12:30 PM	RSN
J4	--	--	at Louisville*	7:00 PM	ACCN Extra
J7	--	--	NC STATE*	3:00 PM	RSN
J11	--	--	at Wake Forest*	7:00 PM	ACCN Extra
J14	--	--	VIRGINIA*	3:00 PM	ESPN2
J18	--	--	at Virginia Tech*	7:00 PM	ACCN Extra
J21	--	--	at North Carolina*	2:30 PM	RSN
J25	--	--	BOSTON COLLEGE*	7:00 PM	ACCN Extra
J28	--	--	at Pitt*	2:00 PM	ACCN Extra
F1	--	--	GEORGIA TECH*	7:00 PM	ACCN Extra
F4	--	--	NOTRE DAME*	1:00 PM	ESPN2
F7	--	--	WAKE FOREST*	7:00 PM	ACCN Extra
F11	--	--	at Clemson*	2:00 PM	ACCN Extra
F15	--	--	at Syracuse*	7:00 PM	RSN
F19	--	--	FLORIDA STATE*	6:00 PM	ESPN2
F25	--	--	NORTH CAROLINA*	7:00 PM	ACCN Extra

ACC Tournament (Greensboro, N.C.)					
M2	--	--	ACC Tournament Quarters	TBA	RSN
M3	--	--	ACC Tournament Semis	TBA	ESPN2
M4	--	--	ACC Tournament Champ.	1 PM	ESPN2

NCAA Tournament					
M16-19	--	--	NCAA 1st & 2nd Rounds	TBA	TBA
M23-26	--	--	NCAA Regionals	TBA	TBA
M30, A1	--	--	NCAA Final Four	TBA	ESPN

All times are Eastern \* ACC Contest

ALL CAPS - Home Games RSN - Regional Sports Network

ACCN Extra - ACC Network Extra

RSN, which reaches in excess of 51.4 million homes and includes Fox Sports South, Fox Sports Carolinas, Fox Sports Florida, Sun Sports, Fox Sports Indiana, Fox Sports Midwest, Comcast Sports Net Mid-Atlantic, New England Sports Network (NESN), the YES Network, the Madison Square Garden Network (MSG) in New York and Root Sports in Pennsylvania. All ACC games produced as part of the RSN package will be available via WatchESPN, but are subject to regional blackout.



## WINTHROP EAGLES (1-6) At #14/14 DUKE BLUE DEVILS (7-2)



Game 10 ■ Sunday, Dec. 10 ■ 2:00 PM (ET)  
Durham, N.C. ■ Cameron Indoor Stadium (9,314)

At



Radio: Blue Devil IMG Sports Network  
(620 AM, 99.3 FM, 96.5 FM, GoDuke.com, TuneIn app) - Chris Edwards  
TV/Video: ACC Network Extra - Chris Edwards

The Series: Duke leads 3-0

Duke Head Coach: Joanne P. McCallie (Northwestern, '87)

Record: 596-221 (26)

Winthrop Head Coach: Lynette Woodard (Kansas, '81)

Record: 1-13 (3)

### Setting the Scene...

Continuing its five-game homestand, the 14th-ranked Duke women's basketball team (7-2) will host Winthrop (1-6) Sunday, Dec. 10 at 2 p.m., in Cameron Indoor Stadium.

Winthrop owns a 1-6 record on the season and will host Wofford Saturday, Dec. 9 at 2 p.m., before traveling to Durham for the game Dec. 10.

Sunday's contest will be aired live on the ACC Network Extra. It will also be carried on the Blue Devil IMG Sports Network via 620 AM, 99.3 FM, 96.5 FM, TuneIn Radio app and www.GoDuke.com with Chris Edwards on the air beginning at 1:45 p.m.

Following the Winthrop contest, Duke will be off until Dec. 19 for final exams.

### What is Next?...

Duke returns from exam break Tuesday, Dec. 19 at 7 p.m., against Maine. Coach P was the head coach at Maine for eight seasons leading the Black Bears to a 167-73 mark.

### Three Keys...

• Duke has won 13 straight home games in the month of December. The Blue Devils have won 21 out of its last 22 home contests in Cameron Indoor

Stadium. The lone loss was to Oregon in the 2017 NCAA Tournament second round.

• In her 11th year with the Blue Devils and 26th overall season as a head coach, Joanne P. McCallie is only four wins shy of reaching the 600-win mark.

• Blue Devil redshirt senior Rebecca Greenwell needs two three-pointers made to break Duke's all-time treys mark of 252 held by Tricia Liston (2011-14). Greenwell owns 251 in 107 games.

### Storylines/Other Blue Devil Notes...

• Duke will face its third Big South Conference team of the season and owns a 49-game winning streak against the conference.

• Rebecca Greenwell has been limited to 6-of-18 field goals and 0-of-7 from three-point land over the last two games. It marked only the second time in her career she has been held without a three-pointer in back-to-back contests.

• Fifth year senior Bego Faz Davalos made the first Duke start of her career and 74th overall against UNC Greensboro.

• Lexie Brown is coming off tying a career high with eight steals and ranks 16th nationally (T2nd in ACC) with a 3.44 per game average. Her 31 steals is tied for the fifth-most among power five conferences.

### Probable Duke Starters...

No.	Name	Pos.	PPG	RPG	APG	Notes
5	Leaonna Odom (So., 6-2)	F	10.6	7.7	1.0	Career-high 13 rebounds vs. Ohio State
35	Erin Mathias (Sr., 6-4)	F/C	10.1	5.7	1.7	Career-high 24 points vs. UNCG
21	Bego Faz Davalos (R-Sr., 6-3)	C	2.1	3.0	1.0	Grad. Transfer - 2X MWC Defensive POY
23	Rebecca Greenwell (R-Sr., 6-1)	G	14.8	6.2	1.6	Needs 2 treys to break Duke career mark
4	Lexie Brown (R-Sr., 5-9)	G	18.9	4.1	5.1	Had 20+ points three times

### Off the Bench...

No.	Name	Pos.	PPG	RPG	APG	Notes
2	Haley Gorecki (R-So., 6-0)	G	5.4	2.3	1.6	Had 11 pts, 7 reb. vs. #8 Ohio St.
12	Mikayla Boykin (Fr., 5-9)	G	4.3	2.8	3.3	Dished 30 assists on season
25	Jade Williams (Fr., 6-5)	F/C	2.8	2.7	0.6	McDonald's All-America
14	Faith Suggs (Jr., 6-1)	G/F	1.6	0.9	0.5	Had eight points vs. Presbyterian
44	Madison Treece (Fr., 6-4)	F	1.3	0.7	0.1	Pulled down 10 rebounds in game in Italy
32	Jayda Adams (Fr., 6-0)	G	0.4	0.4	0.2	No. 36 overall recruit nationally
30	Emily Schubert (R-Fr., 6-4)	C	0.0	0.0	0.3	Missed 2016-17 with torn ACL

# 2017-18 Duke Radio/Television Roster



**2 - Haley Gorecki**  
G • R-SO • 6-0  
Palatine, Ill.  
(William Fremd H.S.)



**4 - Lexie Brown**  
G • R-SR • 5-9  
Suwanee, Ga.  
(North Gwinnett/Maryland)



**5 - Leaonna Odom**  
F • SO • 6-2  
Lompoc, Calif.  
(Chaminade)



**11 - Sofia Roma**  
C • R-JR • 6-2  
Richmond Hill, N.Y.  
(Wagner College)



**12 - Mikayla Boykin**  
G • FR • 5-9  
Clinton, N.C.  
(Clinton)



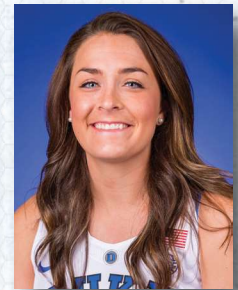
**14 - Faith Suggs**  
G/F • JR • 6-1  
Flossmoor, Ill.  
(Homewood Flossmoor)



**15 - Kyra Lambert**  
G • JR • 5-9  
Cibolo, Texas  
(Samuel Clemens)



**21 - Bego Faz Davalos**  
C • R-SR • 6-3  
San Luis Potosi, Mexico  
(Technologico De Monterrey/  
Fresno State)



**23 - Rebecca Greenwell**  
G • R-SR • 6-1  
Owensboro, Ky.  
(Owensboro Catholic)



**25 - Jade Williams**  
F/C • FR • 6-5  
The Colony, Texas  
(The Colony)



**30 - Emily Schubert**  
C • R-FR • 6-4  
Elizabethton, Tenn.  
(Elizabethton)



**32 - Jayda Adams**  
G • FR • 6-0  
Irvine, Calif.  
(Mater Dei)



**35 - Erin Mathias**  
F/C • SR • 6-4  
Pittsburgh, Pa.  
(Fox Chapel Area)



**44 - Madison Treece**  
F • FR • 6-4  
St. Peters, Mo.  
(Rock Bridge)



**Joanne P. McCallie**  
Head Coach  
11th Season at Duke



**Hernando Planells**  
Associate Head Coach  
6th Season at Duke



**Rene Haynes**  
Assistant Coach  
4th Season at Duke



**Sam Miller**  
Assistant Coach  
3rd Season at Duke

**Quick Facts**

Location .....	Durham, N.C.
Enrollment .....	6,485
Founded .....	1838 Trinity College
Color .....	Duke Blue & White
Nickname .....	Blue Devils
Conference .....	ACC
Arena .....	Cameron Indoor Stadium (9,314)
President .....	Vincent Price
Director of Athletics/Vice President ...	Kevin White
Basketball Office Phone .....	(919) 613-7565
Head Coach .....	Joanne P. McCallie
Associated Head Coach .....	Hernando Planells
Assistant Coaches .....	Rene Haynes, Sam Miller
Athletic Trainer .....	Summer McKeehan
Sport Performance Coach .....	Ashleigh Beaver
Physical Therapist .....	Jordan Busse

**Basketball History**

First Year of Basketball .....	1975-76
Overall All-Time Record .....	890-388 (43 Years)
ACC Record .....	369-207 (40 Years)
Home Record .....	461-122
Road Record .....	272-191
Neutral Record .....	157-75
NCAA Appearances/Last .....	23/2017
NCAA Best Finish. 1999, 2006, NCAA Runner-Up	
WNIT Appearances/Last .....	1/1986
ACC Tournament Titles .....	'13, '11, '10, '04-00
ACC Regular Season Title .....	'13, '12, '11, '10, '07, '05, '04, '03, '02, '01, '99, '98

**Media Information**

All coach and player interviews must be arranged through the sports information office by getting in touch with senior associate sports information director Lindy Brown at 919-684-2664 or lindy.brown@duke.edu.

Sports Information Office Address:  
 Duke Athletics External Operations |  
 287 Scott Family Athletics Performance Center  
 Box 90557 | Durham, NC 27708

**Breaking Down the Numbers**

**Under Head Coach Joanne P. McCallie  
 2007-08 through 2017-18  
 (As of 12-8-17)**

- Record when Duke has:**  
 Given up 40 pts. or fewer: 35-0  
 Given up 50 pts. or fewer: 104-0  
 Given up 60 pts. or fewer: 180-8  
 Given up 70 pts. or fewer: 232-33  
 Given up more than 70 pts.: 15-39

- Scored 70+ points: 192-12  
 Scored 80+ points: 11-2**

• Duke dished a season-high 24 assists and had a season-high 17 steals against UNCG.

• On two occasions this season, Lexie Brown has nearly registered a triple-double. Against UNCG, she had 20 points, nine assists, a career-high tying eight steals and seven rebounds. At ODU, she had 28 points, eight assists and eight rebounds.

• Leaonna Odum (56.4) and Erin Mathias (55.3) rank seventh and eighth, respectively, in the ACC field goal percentage.

• The Blue Devils currently lead the ACC and rank 22nd nationally with a 39.6 three-point field goal percentage.

• Rebecca Greenwell is the ACC active career leader three-point field goals made (251) and ranks second in points (1,618) behind Myisha Hines-Allen (Louisville) with 1,623 points. Greenwell also ranks seventh among active power five conference guards in career scoring.

• Duke ranks second in the ACC in paint defense, only allowing 18.7 points in the paint per game. NC State leads with 18.0 points allowed.

• Rebecca Greenwell became just the 11th player in Duke history to reach the 1,600-point mark with her 19 points against Ohio State. She needs only two points to move into a tie for 10th place on the Duke career list along with Georgia Schweitzer (1,620).

• Rebecca Greenwell and Lexie Brown have combined to score 3,235 points and drain 461 three-pointers over their career, which leads the ACC among active players.

• After turning the ball over only 30 times the previous three games, Duke had a season-high 21 turnovers against eighth-ranked Ohio State. The Blue Devils had 10 in the first half against South Carolina, but finished the game with 13. Duke had only 10 turnovers in the last game against UNCG.

• Lexie Brown of Duke (18.9 points, 5th; 5.1 assists, T5th) and Paris Kea of North Carolina (19.9 points, 3rd; 6.9 assists, 4th) are the only two players in the ACC to rank in the top five in both points and assists.

• Lexie Brown registered seven assists against Presbyterian with no turnovers in 32 minutes of action. It marked the sixth time at Duke she has played over 30 minutes and not registered a turnover. She did it only twice in two years at Maryland.

• Duke (73.07) will feature almost a four-inch height advantage when the Blue Devils play Winthrop Sunday (69.19). The Eagles feature three players standing 6-2 or taller, while Duke has seven student-athletes.

• Rebecca Greenwell became the first Duke player to amass 1,500 points, 600 rebounds and 200 made three-pointers at Villanova. Greenwell could also become the third guard in Blue Devil history to register 1,500 points and 700 rebounds along with Monique Currie and Alana Beard. Greenwell currently owns 1,618 points and 637 rebounds.

• Lexie Brown has played in the ACC for two different teams (2013-14 at Maryland; 2016-17 at Duke) and holds the best career free throw percentage in those contests (88.3). Duke's Nicole Erickson ranks second with an 88.0 mark.

• Rebecca Greenwell's 251 three-pointers over

**Tale Of The Tape**

<b>Duke.....</b>	<b>Statistical Comparison.....</b>	<b>Winthrop</b>
7-2 .....	Record .....	1-6
.467 .....	Field Goal Percentage .....	.318
.369 .....	Opponent Field Goal Percentage .....	.401
.396 .....	Three-Point Field Goal Percentage .....	.268
5.9 .....	Three-Pointers Per Game .....	4.9
.667 .....	Free Throw Percentage .....	.565
13 .....	Offensive Rebounds Per Game .....	13.6
39.3 .....	Rebound Average .....	38.7
+9.1 .....	Rebound Margin .....	-9.1
71.9 .....	Points Per Game .....	52.6
58.0 .....	Points Allowed Per Game .....	72.4
+13.9 .....	Point Differential .....	-19.9
3.8 .....	Blocks Per Game .....	3.7
16.7 .....	Assists Per Game .....	7.3
10.2 .....	Steals Per Game .....	8.3
13.8 .....	Turnovers Per Game .....	21.9

her career ranks tied 14th on the ACC career charts and needs two more to move into 10th.

• Graduate transfer Bego Faz Davalos owns 349 career blocks and needs only 10 to move into a tie for 27th on the NCAA all-time blocks list.

• All 29 of Duke's 2017-18 contests will be aired on some type of television between ESPN3, ACC Network Extra, ESPN2, RSN-TV, SEC Network and Nova Nation.

• Follow @DukeWBB and @CoachPDuke on Twitter to get the latest updates on Duke women's basketball. Also, "Like" Duke Women's Basketball on Facebook to get the latest videos, pictures and more. DWB is on Instagram at dukewbb.

**The Last Time Duke/Winthrop Met...**

November 15, 2015  
 at Cameron Indoor Stadium (Durham, N.C.)

Winthrop	FG	3FG	FT	REB	PF	TP	A TO	B	S	Min
Boyd f	0-4	0-0	0-0	1-1-2	1	0	0	0	1	19
Mbamalu f	5-9	0-0	0-2	1-2-3	5	10	0	1	0	26
Whitaker c	4-10	0-0	0-0	5-4-9	1	8	0	2	2	39
Kilpatrick g	3-15	0-3	2-3	1-3-4	4	8	3	4	1	34
Williams g	6-12	2-4	3-6	1-4-5	1	17	2	8	0	36
Banks	3-8	1-5	0-0	0-1-1	5	7	2	3	1	27
Nu. Jackson	0-6	0-1	0-0	1-0-1	3	0	0	0	0	11
Na. Jackson	0-3	0-0	0-0	1-0-1	0	0	0	1	0	4
Burford	0-0	0-0	0-0	1-0-1	0	0	0	0	0	4
TEAM				7-2-9						1
<b>Totals</b>	<b>21-67</b>	<b>3-13</b>	<b>5-11</b>	<b>19-17-36</b>	<b>20</b>	<b>50</b>	<b>7</b>	<b>20</b>	<b>4</b>	<b>13 200</b>
<b>Pct.</b>	<b>31.3</b>	<b>23.1</b>	<b>45.5</b>	<b>DB: 4</b>						

FG's (1st half: 14-34, 41.2%; 2nd half: 7-33, 21.2%)  
 3FG's (1st half: 2-6, 33.3%; 2nd half: 1-7, 14.3%)  
 FT's (1st half: 1-5, 20.0%; 2nd half: 4-6, 66.7%)

Duke	FG	3FG	FT	REB	PF	TP	A TO	B	S	Min
Stevens f	7-11	0-1	4-6	5-9-14	3	18	1	2	8	3
Mathias c	2-3	0-0	2-2	2-4-6	0	6	2	2	0	13
Primm g	2-5	0-0	2-4	1-1-2	2	6	2	2	0	18
Lambert g	3-7	0-2	2-3	0-1-1	3	8	4	3	0	1
Greenwell g	5-10	5-10	2-2	1-3-4	0	17	2	3	0	32
Gorecki	1-5	1-3	1-2	1-0-1	0	4	0	3	0	17
Salvadores	3-6	0-2	1-2	1-1-2	2	7	4	4	1	20
Riggs	0-1	0-1	0-0	0-0-0	0	0	0	0	0	3
Suggs	1-4	0-1	1-2	3-1-4	1	3	1	1	0	10
Cooper	2-4	0-0	1-1	1-2-3	1	5	2	1	1	14
Chidom	2-3	0-0	0-2	4-3-7	3	4	0	0	1	14
Henson	0-2	0-1	0-0	2-2-4	2	0	0	2	5	0
TEAM				1-2-3						
<b>Totals</b>	<b>28-61</b>	<b>6-21</b>	<b>16-26</b>	<b>22-29-51</b>	<b>17</b>	<b>78</b>	<b>18</b>	<b>23</b>	<b>16</b>	<b>12 200</b>
<b>Pct.</b>	<b>45.9</b>	<b>28.6</b>	<b>61.5</b>	<b>DB: 4</b>						

FG's (1st half: 14-27, 51.9%; 2nd half: 14-34, 41.2%)  
 3FG's (1st half: 4-10, 40.0%; 2nd half: 2-11, 18.2%)  
 FT's (1st half: 9-14, 64.3%; 2nd half: 7-12, 58.3%)

Officials: Kathleen Lynch, Kevin Dillard, Tony Lippa  
 Attendance: 3,582 • Technical Fouls: None

Score by Periods	1st	2nd	3rd	4th	Total
Winthrop	17	14	13	6	50
Duke	27	14	20	17	78

**Winthrop Series Game-by-Game**

Date	(DU Rank)	Site (WU Rank)	Result
Dec. 9, 1986	Duke		W, 80-45
Mar. 22, 2014	#7/8	NCAA Tourney	W, 87-45
Nov. 15, 2015	#14/12	Duke	W, 78-50

Largest margin of victory by DU:	42 (Mar. 22, 2014)
Largest margin of victory by WU:	N/A
Most points scored by DU:	87 (Mar. 22, 2014)
Most points scored by WU:	50 (Nov. 15, 2015)
Fewest points scored by DU:	78 (Nov. 15, 2015)
Fewest points scored by WU:	45 (2x)
Most consecutive wins by DU:	3
Most consecutive wins by WU:	0
Overall series record:	3-0
At Duke:	0-0
At Winthrop:	0-0
Neutral:	0-0
In NCAA Tournament:	1-0
Current streak:	W 3

**A Look at Winthrop...**

Winthrop owns a 1-6 record and will host Wofford Saturday, Dec. 9 at 2 p.m., prior to heading to Durham on Sunday.

On the season, the Eagles have been led by Kayla Brown (10.3 points, 2.3 rebounds), Emily Kelley (8.7 points, 18 treys), Maris Cantrell (7.3 points, 4.8 rebounds) and Ronata Rogers (7.1 points, 8.4 rebounds).

Winthrop owns a 0-3 record on the road to open the year.

**The Series with Winthrop...**

The Blue Devils take on the Winthrop Eagles Sunday in the fourth meeting between the two schools in Cameron Indoor Stadium. Duke features a mark of 3-0 over Winthrop for the series. In previous games, the Blue Devils kept the Eagles at or under 50 points, while averaging 81.7 points.

**Duke Versus the Big South Conference...**

Duke boasts a record of 30-5 against teams in the Big South Conference – Campbell (3-5), Charleston So. (2-0), Gardner-Webb (1-0), High Point (1-0), Liberty (5-0), Longwood (1-0), Presbyterian (2-0), UNC Asheville (9-0), Radford (3-0), and Winthrop (3-0).

The Blue Devils hold a 49-game winning streak against the Big South Conference, with the last team to push past being Campbell in 1977.

Coach P holds a record of 6-0 against the Big South – High Point (1-0), Liberty (1-0), Longwood (1-0), Presbyterian (1-0) and Winthrop (2-0).

**Mathias Continues to Play Big...**

In the last three games, senior Erin Mathias averaged 16.7 points, 6.3 rebounds, 2.0 assists and 1.7 blocks. This included a then career-high 16 points at South Carolina and a career-high 24 points against UNC Greensboro. Against the Spartans, Mathias hit a career-high 12-of-18 field goals.

Mathias has totaled three straight games with double-digit scoring for the first time in her career.

Going against one of the best post players in the nation, Stephanie Mavunga of Ohio State, Mathias

registered her second career double-double with 10 points and 10 rebounds in 35 minutes. She also helped limit Mavunga to only seven points and seven rebounds in 30 minutes.

**At Home in 2017-18...**

Duke boasts a 5-0 record at home this season, including two victories over ranked opponents.

Lexie Brown (20.0 points), Rebecca Greenwell (15.0 points), Leonna Odom (12.0 points) and Erin Mathias (10.2 points) have paced the Blue Devils in those games. Brown has hit 11-of-21 for a 52.4 percentage. Odom is pulling down 8.8 rebounds as well, while hitting 68.2 percent from the field.

As a team, Duke is averaging 76.4 points and hitting 51.4 percent from the field in Cameron.

**Lambert to Miss 2017-18 Season...**

Junior Kyra Lambert announced she will miss the 2017-18 season, after suffering a torn ACL in the first round of the 2017 NCAA Tournament.

Lambert will have two years of eligibility remaining. She has started 56-of-65 games as a Blue Devil.

**Top Scoring Backcourts...**

Duke features the eighth-highest scoring backcourt in the nation among power five conferences --

**Top Backcourts - Power Five Conferences**

- 41.6 - K.Mitchell/L.Harper, Ohio State
- 37.8 - K.Bell/C.Wagner, Minnesota
- 37.5 - M.Monk/D.Cosper, Arkansas
- 36.4 - A.Ogunbowale/J.Young, Notre Dame
- 36.2 - M.Muhammad/S.Sessom, Ole Miss
- 35.7 - P.Kea/J.Cherry, North Carolina
- 34.4 - C.Carter/D.Williams, Texas A&M
- 33.7 - L. Brown/R.Greenwell, Duke**

**NCAA Active Career Leaders...**

Duke features three student-athletes ranking in the top 10 of the NCAA active career leaders in eight categories --

**Lexie Brown**

- Free throw percentage (2nd, 86.6)
- Assists (6th, 487)
- Steals (6th, 254)

**Rebecca Greenwell**

- 3-point field goals made (T3rd, 251)

**Bego Faz Davalos**

- Rebounds (1st, 923)
- Blocked shots (1st, 350)
- Blocked shot average (1st, 3.21)
- Double-doubles (T3rd, 37)

**Stingy Defense...**

Heading into the Ohio State at Duke contest Nov. 30, the Buckeyes were averaging 94.0 points a contest and had not scored fewer than 85 in a game. The Blue Devil defense limited OSU to only 60 points and a season-low 32.4 percent shooting.

Duke has also held High Point (50), Oregon State (65-tied) and UNC Greensboro (54) to season

**Joanne P. McCallie**  
Head Coach



**COACHING HONORS**

**National Coach of the Year**

Associated Press	2005
Basketball Times	2005
Nike	2005

**Conference Coach of the Year**

Atlantic Coast Conference	2010, 2012, 2013
Big Ten	2005
America East	1999
North Atlantic	1995 & 1996

*\* First D-I coach to win Coach of the Year honors in four different conferences*

**Basketball Coaches Association Michigan College Coach of the Year**

Michigan State	2005
----------------	------

**COACHING HIGHLIGHTS**

NCAA National Championship Game	1
	(2005)
NCAA Final Four	1
	(2005)
NCAA Elite Eight	5
	(2005, 2010, 2011, 2012, 2013)
NCAA Sweet Sixteen	9
	(2005, '06, '08, '10, '11, '12, '13, '15, '17)
NCAA Tournament Bids	20
	(1995, '96, '97, '98, '99, 2000, '03, '04, '05, '06, '07, '08, '09, '10, '11, '12, '13, '14, '15, '17)

**RECORD BREAKDOWN**

Overall	596-221 (26 Years)
Record at Duke	280-73 (11 Years)
Atlantic Coast Conference	121-33 (10 Years)
ACC Tournament	19-7 (10 Appearances)
NCAA Tournament	29-20 (20 Appearances)
Record at Michigan State	149-75 (7 Years)
Big Ten (while at MSU)	68-44 (7 Years)
Record at Maine	167-73 (8 Years)
North Atlantic (while at Maine)	48-14 (4 Years)
America East (while at Maine)	61-11 (4 Years)
Home	321-74 (26 Years)
Away	197-106 (26 Years)
Neutral	78-41 (26 Years)

**Streaks**

Overall	Won 1
Unranked teams anywhere	Won 3
Ranked teams anywhere	Lost 1
Home	Won 5
Home ACC	Won 8
Home non-conference	Won 5
Home unranked	Won 4
Home unranked non-conference	Won 4
Home ranked teams	Won 8
Road	Lost 1
Road ACC	Won 3
Road ranked teams	Lost 8
Road unranked teams	Won 1
Neutral	Lost 1
Neutral ranked teams	Lost 1
Neutral unranked teams	Won 13

**Consecutive Games with a 3-Pointer Made**

Lexie Brown	8
Haley Gorecki	1
Mikayla Boykin	1

**Consecutive Free Throws Made**

Lexie Brown	3
Mikayla Boykin	3
Madison Treece	3
Faith Suggs	2
Erin Mathias	2
Rebecca Greenwell	1
Haley Gorecki	1
Leaonna Odom	1
Kyra Lambert	1

**Consecutive Double-Figure Scoring Games**

Lexie Brown	18
Erin Mathias	3

Starts	Consecutive	Career
Rebecca Greenwell	43 (35-8)	107 (77-30)
Lexie Brown	43 (35-8)	43 (35-8)
Leaonna Odom	11 (8-3)	26 (20-6)
Erin Mathias	10 (7-3)	19 (15-4)
Bego Faz Davalos	1 (1-0)	1 (1-0)
Kyra Lambert		55 (44-11)
Mikayla Boykin		8 (6-2)
Haley Gorecki		1 (1-0)

**Games Played**

Rebecca Greenwell	107 (77-30)
Erin Mathias	101 (75-26)
Faith Suggs	69 (51-18)
Kyra Lambert	65 (48-17)
Leaonna Odom	43 (35-8)
Lexie Brown	43 (35-8)
Haley Gorecki	24 (18-6)
Jayda Adams	9 (7-2)
Mikayla Boykin	9 (7-2)
Bego Faz Davalos	9 (7-2)
Jade Williams	9 (7-2)
Madison Treece	7 (6-1)
Emily Schubert	3 (3-0)

**Rankings**

In the AP Top 25	20
Entered week of Dec. 5, 2016	

low points.

**Gorecki Matches Career High...**

Redshirt sophomore Haley Gorecki keeps getting better each time she sets foot on the court, after missing a year and a half with injuries.

Gorecki came off the bench against Ohio State and registered 10 first half points to key the Blue Devils to a 43-31 lead at the half. She hit 3-of-5 field goals and 2-of-4 from downtown, while matching a career high with five boards in 13 minutes.

She finished the game tying a career high with 11 points, pulling down a career-high seven rebounds and dishing four assists. Gorecki also scored 11 points at Old Dominion as she tied a career high with three treys.

Coach P has called her the sixth starter for the Blue Devils.

**Record Watch...**

Redshirt senior Rebecca Greenwell needs only two three-pointers to break the Duke career three-pointers made record held by Tricia Liston (252). Greenwell owns 251 over four years with the Blue Devils. Greenwell is only 55 three-pointers attempted away from matching Abby Waner's mark of 691.

With 86 double-figure scoring games under her belt, Greenwell ranks eighth overall on the Blue Devil list.

**Splash Sisters Go Off for 50...**

Duke's "Splash Sister" duo of Lexie Brown and Rebecca Greenwell erupted for 50 points, 17 rebounds, eight assists and five steals at Old Dominion.

They hit 18-of-25 field goals and 10-of-13 treys. It marked the fourth time the tandem have combined for 50 or more points over the last two years - 2017-18 (Old Dominion), 2016-17 (Longwood, Old Dominion, Miami).

**Blue Devils Add Graduate Transfer...**

Over the summer, Duke added 6-3 graduate transfer Bego Faz Davalos to the Blue Devil roster. Davalos graduated from Fresno State in May and enrolled in the Duke Fuqua School of Business in July.

Heading into 2017-18, Davalos was the NCAA active leader in rebounds (896), blocks (346), blocks

**The Rankings**

Associated Press Poll (Dec. 4)	USA Today ESPN Coaches Poll (Dec. 5)
1. Connecticut (31)	1. Connecticut (32)
2. Texas	2. Notre Dame
3. Notre Dame	3. Mississippi State
4. Louisville	4. Texas
5. South Carolina	5. Louisville
6. Mississippi State	6. South Carolina
7. UCLA	7. UCLA
8. Baylor	8. Baylor
9. Oregon	9. Oregon
10. West Virginia	10. Florida State
11. Tennessee	11. West Virginia
12. Ohio State	12. Ohio State
13. Florida State	13. Tennessee
<b>14. Duke</b>	<b>14. Duke</b>
15. Maryland	14. Maryland
16. South Florida	16. South Florida
17. Missouri	17. Missouri
18. Stanford	18. Stanford
19. Oregon State	19. Oregon State
20. Kentucky	20. Villanova
21. Texas A&M	21. Michigan
22. Villanova	22. Texas A&M
23. Wisc-Green Bay	23. Kentucky
24. Michigan	24. Syracuse
25. California	25. Wisc-Green Bay

**Duke in the Polls**

	AP	USA Today ESPN
Preseason	12	12
Nov. 13	11	no poll
Nov. 20	16	17
Nov. 28	14	16
Dec. 5	14	14

**The Duke Roster**

No.	Name (@Twitter Handle)	Ht.	Yr.	Pos.	Exp.	Hometown (High School/Last School)
2	Haley Gorecki (@HaleyGorecki)	6-0	R-So.	G	2V	Palatine, Ill. (William Fremd)
4	Lexie Brown (@lexiekiah_4)	5-9	R-Sr.	G	TR-4V	Suwanee, Ga. (North Gwinne /Maryland)
5	Leaonna Odom	6-2	So.	F	1V	Lompoc, Calif. (Chaminade)
11	Sofi a Roma	6-2	R-Jr.	C	TR-3V	Richmond Hill, N.Y. (Wagner College)
12	Mikayla Boykin (@mikayla_niyel)	5-9	Fr.	G	HS	Clinton, N.C. (Clinton)
14	Faith Suggs (@faith_suggs)	6-1	Jr.	G/F	2V	Flossmoor, Ill. (Homewood Flossmoor)
15	Kyra Lambert (@bballaholic_15)	5-9	Jr.	G	2V	Cibolo, Texas (Samuel Clemens)
21	Bego Faz Davalos (@begofaz)	6-3	R-Sr.	C	TR-4V	San Luis Potosi, Mexico (Technologico De Monterrey/FSU)
23	Rebecca Greenwell (@bgreenwell23)	6-1	R-Sr.	G	4V	Owensboro, Ky. (Owensboro Catholic)
25	Jade Williams (@jadeswilliams25)	6-5	Fr.	F/C	HS	The Colony, Texas (The Colony)
30	Emily Schubert (@e_schubert35)	6-4	R-Fr.	C	1V	Elizabethton, Tenn. (Elizabethton)
32	Jayda Adams (@realjayadams)	6-0	Fr.	G	HS	Irvine, Calif. (Mater Dei)
35	Erin Mathias (@emathias35)	6-4	Sr.	F/C	3V	Pittsburgh, Pa. (Fox Chapel Area)
44	Madison Treece (@TREECEmadison)	6-4	Fr.	F	HS	St. Peters, Mo. (Rock Bridge)

**Head Coach:** Joanne P. McCallie (Northwestern, '87) - @CoachPDuke

**Associate Head Coach:** Hernando Planells (Regis) - @hernandojr

**Assistant Coach:** Rene Haynes (Michigan State, '07) - @CoachHaynesDuke; Sam Miller (Adrian College, '10) - @SamMiller906

**Duke Pronunciation Guide**

<b>Bego Faz Davalos</b> .....	bay-go fahz dah-vuh-los
<b>Haley Gorecki</b> .....	Gore - wreck - e
<b>Rene Haynes</b> .....	Ree - Knee
<b>Erin Mathias</b> .....	Ma - High - us
<b>Leaonna Odom</b> .....	Lee - AH - na
<b>Joanne P. McCallie</b> .....	mc - CAW - lee

per game (3.46) and double-doubles (37).

Davalos was twice named the Mountain West Conference Defensive Player of the Year, while averaging 14.6 points, 11.2 rebounds and 3.5 blocks as a redshirt junior.

**Top Backcourt Returns...**

Duke returns the highest scoring duo in the ACC and fifth nationally with the tandem of Lexie Brown (18.3) and Rebecca Greenwell (16.4). They combined to average 34.7 points a contest, which was the fifth-highest duo in school history.

The Blue Devil tandem are the fourth-highest returning duo in Duke history.

**The top returning scoring tandems in the nation--**

- 40.6 - N.Collier/KL Samuelson, UConn
- 35.7 - E.Clemens/M.Blumer, Western Illinois
- 35.2 - C.Wagner/K.Bell, Minnesota
- 35.1 - K.Flaherty, K.Gondrezick, Michigan
- 34.7 - L. Brown/R.Greenwell, Duke**
- 34.0 - S.Watts/P.Kea, North Carolina

**Duke top returning scoring tandems--**

- 37.8 - C.Moreland/K.Meier (1986-87)
- 37.6 - C.Moreland/K.Meier (1985-86)
- 36.5 - A.Beard/I.Tillis (2002-03)
- 34.7 - L.Brown/R.Greenwell (2016-17)**
- 33.0 - S.Harnett/J.Kraft (1988-89)

**Wooden Award Candidates...**

Both Rebecca Greenwell and Lexie Brown were named two of 30 candidates for the John R. Wooden Award, which is awarded annually to the National Player of the Year in women's basketball.

Duke was one of eight teams with multiple honorees listed along with Connecticut (5), Louisville (2), Mississippi State (2), Oregon (2), Tennessee (2), Texas (2) and UCLA (2).

**Coach P Radio Show Dates Announced...**

The dates for the Joanne P. McCallie Radio Show have been released. The show will air from 6-7 p.m., at Tobacco Road Sports Café in Durham, N.C.

The Joanne P. McCallie show will feature eight total dates for the season beginning with next show Monday, Dec. 11. Other confirmed dates include Jan. 8, Jan. 22, Feb. 12, Feb. 21, Feb. 28 and March 5.

McCallie and host Chris Edwards will air live on Buzz Sports Radio (620 AM, 96.5 FM – Durham, 99.3 FM – Raleigh). Tobacco Road Sports Café is located at 280 S. Mangum Street in Durham and can also be found at [www.tobaccoroadsportscafe.com](http://www.tobaccoroadsportscafe.com).

**One of Tallest Teams...**

Duke continues its theme of having tall teams in

2017-18 as the Blue Devils will feature fifth-tallest team in school history standing an average of 73.07 inches.

The 73.07 average height is just shy of 2016-17 (73.39), 2014-15 (73.25), 2011-12 (73.25) and 2005-06 (73.08).

Duke is the tallest team in the ACC with a 6-1 average, while Virginia ranks second with a 72.39 ledger. In looking at the Blue Devils' non-conference opponents, Oregon State (72.64) and Wyoming (72.14) are the next closest teams in terms of height.

The Blue Devils feature 11 players standing 6-0 or taller and seven at 6-2 or better on the 2017-18 roster.

**Nancy Lieberman List...**

For the fourth time in four collegiate seasons, Duke redshirt senior Lexie Brown has been selected to the Nancy Lieberman Award watch list. Brown is one of 20 candidates for the top point guard in women's NCAA Division I college basketball.

Brown was a Nancy Lieberman Award candidate as a freshman and sophomore at Maryland, while also being selected as a redshirt junior and redshirt senior at Duke.

**Ann Meyers Drysdale Candidate...**

Blue Devil redshirt senior Rebecca Greenwell was selected one of 20 watch list candidates for the 2018 Ann Meyers Drysdale Award. The annual award in its inaugural year recognizes the top shooting guard in women's NCAA Division I college basketball.

The award is named after Ann Meyers Drysdale, who was the first player, male or female, to be named to the All-America Team in four straight college seasons at UCLA.

**Katrina McClain Award List...**

The Naismith Memorial Basketball Hall of Fame and the Women's Basketball Coaches Association have announced the 20 watch list candidates for the 2018 Katrina McClain Award, which includes Duke University sophomore Leaonna Odom.

Named after the two-time All-American and 1987 National Player of the Year, the annual award in its inaugural year recognizes the top power forwards in women's NCAA Division I college basketball.

**Preseason All-America Recognition...**

In the preseason basketball magazines, both Lexie Brown and Rebecca Greenwell received All-America recognition.

Brown earned First Team All-America honors by Street & Smith's along with a second team nod from Lindy's Sports Annual. Greenwell was a Second Team All-America by Street & Smith's.

Duke was also tabbed No. 8 ledger by Street & Smith's Basketball. The Blue Devils also received a No. 12 ranking from Lindy's Sports Annual and was No. 17 in the Athlon Sports College Basketball Preview.

**Gorecki's Back...**

After missing the last year and a half due to injuries, redshirt sophomore Haley Gorecki returns to the court in 2017-18.

Gorecki played 14 games as a freshman in 2015-

**Double-Doubles**

**Lexie Brown (1)**

**2016-17 (1)**  
14 pts., 12 assists at Pepperdine

**Rebecca Greenwell (12)**

**2016-17 (5)**  
15 pts., 10 reb. vs. Grand Canyon  
10 pts., 10 reb. vs. Kentucky  
18 pts., 10 reb. vs. Syracuse  
22 pts., 13 reb. vs. Miami  
26 pts., 10 reb. vs. Hampton

**2015-16 (2)**

25 pts., 12 reb. vs. Virginia  
27 pts., 10 reb. at North Carolina

**2014-15 (5)**

17 pts., 10 reb. at Alabama  
22 pts., 12 reb. vs. Marquette  
10 pts., 13 reb. vs. Buffalo  
11 pts., 10 reb. vs. Oklahoma  
14 pts., 14 reb. at North Carolina

**Kyra Lambert (1)**

**2016-17 (1)**  
12 pts., 13 assists at North Carolina

**Erin Mathias (2)**

**2017-18 (1)**  
12 pts., 10 rebounds at Grand Canyon  
10 pts., 10 rebounds vs. Ohio State

**Leaonna Odom (3)**

**2017-18 (2)**  
13 pts., 12 reb. at Villanova  
14 pts., 10 reb. vs. Presbyterian

**2016-17 (1)**

16 pts., 10 reb. at Pepperdine

**2017-18 Honors**

**Mikayla Boykin**

- Preseason
- ACC Newcomer Watch List

**Lexie Brown**

- Wade Watch List
- Citizen Naismith Player of the Year Candidate
- John R. Wooden Award Candidate

Preseason

- Nancy Lieberman Award Candidate
- All-ACC
- Street & Smith First Team All-America
- Lindy's Sports Annual Second Team All-America

**Bego Faz Davalos**

- Preseason
- ACC Newcomer Watch List

**Rebecca Greenwell**

- Citizen Naismith Player of the Year Candidate
- John R. Wooden Award Candidate

Preseason

- Ann Meyers Drysdale Award Candidate
- All-ACC
- Street & Smith Second Team All-America

**Leaonna Odom**

- Preseason
- Katrina McClain Award Candidate

16, before suffering a season-ending hip injury. That same injury forced her to redshirt the 2016-17 campaign.

### **Fashion Show...**

On September 28, 2017, senior Erin Mathias debuted her Erin Mathias Designs fashion collection in front of the Duke Chapel. She held a fashion show that included teammates, practice players and other Blue Devil student-athletes.

Mathias has been working on her clothing line for a couple of years. She is majoring in visual arts and media studies along with an innovation and entrepreneurship certificate.

She is working on trying to produce an outfit for Coach P to wear during a game this season.

### **Duke Preseason Ranked 12th...**

The Blue Devils are preseason ranked No. 12 in both the Associated Press and USA Today Coaches Polls.

Duke has been tabbed in the top 15 of the Associated Press ledger in 17 out of the last 18 years.

In the preseason magazines, the Blue Devils were as high as No. 8 in the Street & Smith's poll.

### **Blue Devils Tabbed No. 3 in ACC...**

The ACC released the 2017-18 preseason women's basketball polls with the Blue Devils tabbed No. 3 in a vote by the Blue Ribbon Panel and 15 league head coaches.

Redshirt senior Lexie Brown also received preseason ACC Player of the Year by the Blue Ribbon Panel, while redshirt senior Rebecca Greenwell, freshman Mikayla Boykin and fifth-year senior Bego Faz Davalos also received recognition.

Duke, which returns four starters off its squad that totaled a 28-6 overall record a year ago, received 799 points by 60 Blue Ribbon Panel voters.

Defending ACC Champion Notre Dame totaled 858 points and 35 first place votes to take the top slot, while Louisville (5 first place votes), Duke (10 first place votes), Florida State (10 first place votes), Miami, Virginia, Syracuse, NC State, Georgia Tech, North Carolina, Virginia Tech, Wake Forest, Pittsburgh, Clemson and Boston College rounded out the predicted finish by the Blue Ribbon Panel.

On the 10-member Blue Ribbon Panel Preseason All-ACC Team, Greenwell and Brown were included, while Shakayla Thomas (Florida State), Asia Durr (Louisville), Myisha Hines-Allen (Louisville), Stephanie Watts (UNC), Paris Kea (UNC), Arike Ogunbowale (Notre Dame), Marina Mabrey (Notre Dame) and Chanette Hicks (Virginia Tech) were selected.

Both Boykin and Davalos were voted to the Newcomer Watch List along with Dana Evans (Louisville), Janelle Bailey (UNC) and Lili Thompson (Notre Dame).

A native of Clinton, N.C., Boykin is coming off an impressive senior campaign at Clinton H.S., where she averaged 37.4 points, 13.7 rebounds, 6.5 assists and 5.6 steals. The 5-9 guard helped guide Clinton to the state championship and was named the Gatorade North Carolina Player of the Year.

Davalos graduated from Fresno State in May and transferred to Duke over the summer. A two-time

Mountain West Conference Defensive Player of the Year, Davalos is the NCAA active leader in rebounds, blocks, blocks per game and double-doubles. She averaged 14.6 points, 11.2 rebounds, 3.5 blocks, 1.8 assists and 1.5 steals. Davalos, who is from San Luis Potosi, Mexico, is only 13 blocks away from moving into a tie for 27th place on the NCAA career blocks list.

The coaches also voted on a preseason poll with Notre Dame (8 first place votes), Louisville (1 first place vote), Duke (3 first place votes), Florida State (3 first place votes), Virginia, Georgia Tech, Syracuse, Miami, North Carolina, NC State, Wake Forest, Virginia Tech, Clemson, Pittsburgh and Boston College listed.

On the Coaches' Preseason All-ACC Team were Brown (Duke), Greenwell (Duke), Thomas (Florida State), Francesca Pan (Georgia Tech), Durr (Louisville), Hines-Allen (Louisville), Kea (UNC), Ogunbowale (Notre Dame), Mabrey (Notre Dame) and Elsie Penna (Wake Forest). Durr was voted the preseason player of the year by the coaches.

Duke's Boykin along with Lorela Cubaj (Georgia Tech), Evans (Louisville), Bailey (UNC) and Thompson (Notre Dame) were on the Newcomer Watch List by the coaches.

### **WNBA Success...**

Since the 2006 WNBA Draft, Duke ranks third in the total number of players drafted -- Tennessee (21), Connecticut (19) and Duke (16).

Three Blue Devils were selected WNBA All-Stars in 2017 as Elizabeth Williams, Jasmine Thomas and Chelsea Gray were honored for their excellent play. Alana Beard earned WNBA Defensive Player of the Year in 2017 as well.

### **Three in Duke Fuqua...**

The Blue Devils currently feature three student-athletes enrolled in the MMS Program at the Duke Fuqua School of Business. The trio of Lexie Brown, Bego Faz Davalos and Rebecca Greenwell enrolled in July.

Duke also has a manager, Erin Webber, in the MMS program this year as well, who graduated from Washington State.

### **Fifth-Ranked Recruiting Class Arrives...**

Head coach Joanne P. McCallie brought in the fifth-ranked recruiting class in the nation in 2017 with the addition of Mikayla Boykin, Jade Williams, Jayda Adams and Madison Treece.

Williams was a McDonald's All-America, while Boykin was the Gatorade North Carolina Player of the Year as a senior.

### **Blue Devils Travel to Italy...**

From Aug. 14-23, 2017, the Blue Devils traveled to Rome, Florence, Bologna, Siena and Venice, Italy, which ended up being a trip of a lifetime.

Duke played three contests, while on the trip, and toured many different famous sights. The Blue Devils defeated Netherlands (84-66), Italian All-Stars (119-33) and lost to Celje Basketball Club (78-65). Duke had to play the final game against Celje without Lexie Brown, Rebecca Greenwell and Bego Faz Davalos, who had

to go back to the U.S., for exams at Duke Fuqua.

### **Belton Moves to the Sidelines...**

After going through three injury-plagued seasons with the Blue Devils, Lyneé Belton decided to take a medical hardship and will be a student assistant coach with Duke in 2017-18.

She had played in 57 games over her career prior to hanging up her kicks.

### **Duke Captains...**

The Blue Devils feature three captains in 2017-18 as redshirt senior Lexie Brown, redshirt senior Rebecca Greenwell and junior Kyra Lambert were selected by the team. It marks the third straight year Greenwell and Brown have been named captains.

Redshirt Sr. Rebecca Greenwell

vs. Notre Dame DNP - Injured

at UNC <sup>A</sup>	30	9-16	1-3	0-0	1-4	2	5	0	0	4	19
vs. Syracuse <sup>A</sup>	35	7-12	3-6	5-5	0-5	2	4	2	0	4	22
vs. Miami <sup>A</sup>	38	5-12	2-5	8-9	0-8	1	4	5	0	4	20
vs. Notre Dame <sup>A</sup>	38	3-11	3-7	7-8	0-3	1	3	5	0	0	16
Hampton <sup>A</sup>	27	4-8	0-1	3-3	1-4	0	9	1	0	5	11
Oregon <sup>A</sup>	39	8-18	2-7	7-7	0-5	2	6	1	0	2	25

2017-18 - Redshirt Senior Year

	Min	FG-A	3G-A	FT-A	OR/TOT	PFA	T	B	S	PPTS	
at GCU <sup>A</sup>	37	6-9	5-6	2-2	3-8	3	5	1	0	2	19
High Point <sup>A</sup>	31	5-12	0-3	0-0	2-8	1	1	1	0	2	10
at Villanova <sup>A</sup>	37	4-14	1-5	0-0	1-6	3	0	1	0	1	9
at ODU <sup>A</sup>	34	8-10	6-7	0-0	0-9	1	0	0	0	2	22
Oregon State <sup>A</sup>	37	6-17	4-9	1-2	2-9	2	1	1	0	1	17
Presbyterian <sup>A</sup>	30	7-13	5-10	3-5	0-3	2	1	1	0	2	22
Ohio State <sup>A</sup>	36	7-17	2-4	3-4	1-4	3	1	4	0	2	19
at S.Carolina <sup>A</sup>	38	3-8	0-2	2-2	2-6	0	2	2	1	2	8
UNCG <sup>A</sup>	26	3-10	0-5	1-2	1-3	1	3	1	0	2	7

2016-17 - Redshirt Junior Year

	Min	FG-A	3G-A	FT-A	OR/TOT	PFA	T	B	S	PPTS	
at Liberty <sup>A</sup>	28	10-21	2-6	6-7	1-6	1	5	4	0	2	28
Penn <sup>A</sup>	36	5-16	2-6	5-6	4-8	2	2	2	0	1	17
Longwood <sup>A</sup>	27	10-20	5-12	5-6	3-7	1	3	3	0	4	30
Grand Canyon <sup>A</sup>	31	5-10	3-6	2-2	1-10	4	3	4	0	2	15
at Vanderbilt <sup>A</sup>	37	6-17	2-9	3-3	1-5	3	2	3	0	3	17
Old Dominion <sup>A</sup>	32	9-14	5-8	1-1	1-6	1	1	2	0	2	24
at L. Beach St. <sup>A</sup>	30	5-9	2-5	2-3	0-4	1	4	1	0	0	14
at Pepperdine <sup>A</sup>	35	11-20	8-16	1-1	3-8	1	1	1	0	0	31
at Rutgers <sup>A</sup>	28	3-9	3-7	2-2	2-6	2	5	3	0	1	11
at South Carolina <sup>A</sup>	37	9-15	4-7	7-8	0-3	3	0	2	0	3	29
Elon <sup>A</sup>	35	4-12	2-4	2-2	2-5	3	2	2	0	0	12
Villanova <sup>A</sup>	37	7-11	2-4	2-2	2-9	3	2	1	0	1	18
Kentucky <sup>A</sup>	37	3-9	1-4	3-4	0-10	2	5	5	0	1	10
Louisville <sup>A</sup>	38	4-10	1-3	1-2	1-6	0	2	2	0	1	10
at Ga. Tech <sup>A</sup>	38	5-10	1-5	6-8	1-5	2	1	4	0	2	17
at Florida State <sup>A</sup>	31	0-5	0-3	2-2	1-6	2	0	3	0	0	2
UNC <sup>A</sup>	37	3-14	0-8	0-0	0-3	2	0	1	0	0	6
at NC State <sup>A</sup>	35	5-12	1-4	0-0	1-7	2	5	2	1	3	11
Virginia Tech <sup>A</sup>	30	5-10	2-5	6-6	4-5	2	4	2	0	3	18
at Boston Col. <sup>A</sup>	34	5-16	2-6	2-2	0-5	0	3	4	0	3	14
at Notre Dame <sup>A</sup>	39	3-9	2-5	3-4	3-6	2	2	3	0	1	11
Wake Forest <sup>A</sup>	31	4-16	3-9	2-2	0-5	1	2	3	0	2	13
Clemson <sup>A</sup>	32	8-13	2-4	3-3	1-4	2	1	1	1	1	21
at Virginia <sup>A</sup>	29	7-10	4-6	3-4	2-6	2	2	3	0	3	21
Syracuse <sup>A</sup>	32	6-14	3-6	3-4	1-10	1	3	3	0	3	18
Pitt <sup>A</sup>	29	3-11	2-7	3-3	1-6	1	1	4	1	2	11
at Wake Forest <sup>A</sup>	34	6-12	3-6	3-4	3-7	1	3	0	0	2	18
Miami <sup>A</sup>	36	7-10	1-2	7-7	3-13	3	4	5	1	0	22
at UNC <sup>A</sup>	35	10-18	6-10	4-4	3-4	3	3	0	0	2	30
vs. Syracuse <sup>A</sup>	33	2-6	1-4	1-2	0-3	0	3	3	1	0	6
vs. Miami <sup>A</sup>	37	3-7	2-4	0-0	2-5	1	1	3	0	1	8
vs. Notre Dame <sup>A</sup>	32	3-11	2-4	4-4	3-5	1	1	3	0	0	12
Hampton <sup>A</sup>	30	8-14	4-7	6-6	2-10	2	3	5	3	2	26
Oregon <sup>A</sup>	39	3-11	0-6	0-0	5-9	4	3	5	0	2	6

2015-16 - Redshirt Sophomore Year

	Min	FG-A	3G-A	FT-A	OR/TOT	PFA	T	B	S	PPTS	
at Penn <sup>A</sup>	33	2-6	1-3	4-4	1-8	3	0	2	0	1	9
Winthrop <sup>A</sup>	32	5-10	5-10	2-2	1-4	0	2	3	0	1	17
Texas A&M <sup>A</sup>	40	8-10	2-2	4-4	1-6	1	2	4	0	0	22
Army <sup>A</sup>	37	4-13	1-8	4-5	1-4	3	3	2	0	2	13
vs. Idaho <sup>A</sup>	33	5-14	3-7	4-5	1-2	2	1	3	0	2	17
vs. Iowa State <sup>A</sup>	32	4-11	3-6	4-5	4-7	1	0	2	0	0	15
vs. Texas State <sup>A</sup>	26	2-8	1-6	2-2	1-7	0	2	3	0	1	7
Minnesota <sup>A</sup>	29	7-11	3-7	0-0	0-8	2	5	4	0	2	17
at S.Carolina <sup>A</sup>	34	2-9	0-2	0-0	2-3	2	2	3	0	0	4
UMass <sup>A</sup>	33	5-14	2-8	0-0	1-7	1	5	2	0	0	12
Liberty <sup>A</sup>	30	9-18	4-8	4-4	2-8	3	2	2	0	4	26
at Kentucky <sup>A</sup>	38	0-6	0-3	1-2	3-3	2	2	3	1	1	1
WCU <sup>A</sup>	27	5-9	2-5	1-2	1-4	2	3	1	1	2	13
UNCW <sup>A</sup>	31	9-15	5-8	0-0	2-9	0	1	1	1	1	23
at Syracuse <sup>A</sup>	30	3-12	2-6	0-0	1-3	1	0	3	0	0	8
Wake Forest <sup>A</sup>	33	7-15	5-10	2-2	1-9	2	2	0	0	4	21
at Louisville <sup>A</sup>	38	4-11	2-3	4-6	2-2	1	2	1	0	1	14
NC State <sup>A</sup>	37	1-7	0-2	4-6	1-6	2	2	4	0	0	6
Boston College <sup>A</sup>	38	8-18	5-9	2-4	0-4	1	2	1	0	5	23
at Clemson <sup>A</sup>	33	5-13	2-6	0-0	0-6	1	3	4	2	4	12
UNC <sup>A</sup>	37	6-14	2-7	2-3	2-5	1	2	5	0	2	16
at Pitt <sup>A</sup>	36	8-13	4-7	2-2	1-2	2	4	1	0	3	22
Notre Dame <sup>A</sup>	33	6-11	2-5	2-5	1-9	3	2	2	1	0	16
Virginia <sup>A</sup>	37	10-14	5-7	0-0	3-12	1	4	6	1	2	25
at Miami <sup>A</sup>	37	4-14	2-6	6-7	2-7	4	1	3	0	2	16
Florida State <sup>A</sup>	32	3-10	1-3	1-1	1-2	3	1	6	0	1	8
at WFU <sup>A</sup>	36	3-8	3-5	2-2	0-6	4	2	3	0	2	11
at Va. Tech <sup>A</sup>	33	6-12	0-4	3-4	6-9	2	2	4	0	0	15
Georgia Tech <sup>A</sup>	37	7-14	2-5	0-0	2-5	1	2	6	0	0	16
at UNC <sup>A</sup>	29	10-17	4-7	3-4	4-10	1	2	1	0	2	27
vs. UVA											DNP - Injured

2014-15 - Redshirt Freshman Year

	Min	FG-A	3G-A	FT-A	OR/TOT	PFA	T	B	S	PPTS	
at Alabama <sup>A</sup>	32	4-11	1-4	8-8	1-10	2	3	4	1	7	17
at ODU <sup>A</sup>	36	4-12	2-8	0-0	0-6	0	5	2	0	1	10
Marquette <sup>A</sup>	33	7-18	4-8	4-4	3-12	0	2	0	1	2	22
Buffalo <sup>A</sup>	30	4-14	1-7	1-3	4-13	1	2	4	0	2	20
Stony Brook <sup>A</sup>	33	4-14	2-9	0-0	1-3	2	3	1	0	1	10
at Texas A&M <sup>A</sup>	38	7-19	3-6	6-6	2-5	2	2	3	1	1	23
at Nebraska <sup>A</sup>	36	2-10	1-4	4-4	1-5	1	3	3	0	0	9
South Carolina <sup>A</sup>	37	4-9	0-3	4-4	0-5	1	0	4	0	4	12
Oklahoma <sup>A</sup>	32	3-9	1-4	4-4	3-10	2	2	5	0	2	11
UMass Lowell <sup>A</sup>	26	6-14	1-4	2-2	3-6	0	3	1	0	4	15
Kentucky <sup>A</sup>	36	5-8	2-4	1-2	1-5	2	4	3	1	2	13
at UConn <sup>A</sup>	33	0-2	0-2	4-4	3-4	4	2	5	1	1	4
NC A&T <sup>A</sup>	25	8-12	4-5	0-0	0-4	1	3	3	0	3	20
Wake Forest <sup>A</sup>	36	5-11	1-6	4-5	2-6	1	2	3	0	1	15
Syracuse <sup>A</sup>	34	6-12	4-8	4-4	1-6	1	5	3	0	4	20
at Florida St. <sup>A</sup>	38	4-8	4-5	7-7	1-5	2	2	5	0	0	19
Virginia Tech <sup>A</sup>	33	8-12	4-8	1-1	1-3	1	0	1	1	1	21
Miami <sup>A</sup>	27	2-9	1-4	0-0	2-2	3	0	4	0	0	5
at Boston Col. <sup>A</sup>	35	4-13	2-6	1-2	2-6	0	1	1	0	0	11
at UNC <sup>A</sup>	44	5-17	2-7	2-4	7-14	2	2	6	0	2	14
Pittsburgh <sup>A</sup>	29	3-9	2-4	2-2	1-5	0	1	3	0	3	10
Louisville <sup>A</sup>	36	4-9	3-7	2-4	1-3	0	2	3	0	1	13
at Wake Forest <sup>A</sup>	36	4-11	1-5	2-5	1-2	2	1	1	0	2	11
Clemson <sup>A</sup>	32	6-13	3-8	4-4	1-4	1	0	1	0	0	19
at Virginia <sup>A</sup>	30	7-16	4-10	4-4	1-5	0	2	4	0	3	22
at Notre Dame <sup>A</sup>	33	2-5	0-2	0-0	0-5	5	1	5	0		

Duke Basketball

Twitter: @DukeWBB, @CoachPDuke

Table with columns for opponent, score, and statistics (FG, 3G, FT, OR, TOT, PFA, T, B, SPTS). Includes games against Minnesota, S. Carolina, UMass, Kentucky, WCU, UNCW, Syracuse, Wake Forest, Louisville, NC State, Boston College, Clemson, UNC, Pitt, Notre Dame, Virginia, Miami, Florida State, WFU, Va. Tech, Georgia Tech, and Notre Dame.

Table with columns for opponent, score, and statistics. Includes games against Iowa State, Texas State, Minnesota, S. Carolina, UMass, Liberty, Kentucky, WCU, UNCW, Syracuse, Wake Forest, Louisville, NC State, Boston College, Clemson, UNC, Pitt, Notre Dame, Virginia, Miami, Florida State, WFU, Va. Tech, Georgia Tech, UNC, UVA, and Notre Dame.

Table with columns for opponent, score, and statistics. Includes games against Army, Idaho, Iowa State, Texas State, Minnesota, S. Carolina, UMass, Liberty, Kentucky, WCU, UNCW, Syracuse, Wake Forest, Louisville, NC State, Boston College, Clemson, UNC, Pitt, Notre Dame, Virginia, Miami, Florida State, WFU, Va. Tech, Georgia Tech, UNC, UVA, and Notre Dame.

2014-15 - Freshman Year

Table with columns for opponent, score, and statistics. Includes games against Alabama, Old Dominion, Marquette, Buffalo, Stony Brook, Texas A&M, Nebraska, South Carolina, Oklahoma, UMass Lowell, Kentucky, UConn, NC A&T, Wake Forest, Syracuse, Florida St., Virginia Tech, Miami, Boston Col., UNC, Pittsburgh, Louisville, Wake Forest, Clemson, Virginia, Notre Dame, NC State, Ga. Tech, North Carolina, vs. WFU, vs. Notre Dame, Albany, Miss. State, and vs. Maryland.

2017-18 - Junior Year

Table with columns for opponent, score, and statistics. Includes games against GCU, High Point, Villanova, ODU, Oregon State, Presbyterian, Ohio State, S. Carolina, and UNCG.

2016-17 - Sophomore Year

Table with columns for opponent, score, and statistics. Includes games against Liberty, Penn, Longwood, Grand Canyon, Vanderbilt, Old Dominion, L. Beach St., Pepperdine, Rutgers, Elon, Kentucky, Louisville, Ga. Tech, Florida State, UNC, NC State, Virginia Tech, Boston Col., Notre Dame, Wake Forest, Clemson, Virginia, Syracuse, Pitt, Wake Forest, Miami, UNC, vs. Syracuse, vs. Miami, vs. Notre Dame, Hampton, and Oregon.

Junior Faith Suggs

2017-18 - Junior Year

Table with columns for opponent, score, and statistics. Includes games against GCU, High Point, Villanova, ODU, Oregon State, Presbyterian, Ohio State, S. Carolina, and UNCG.

2016-17 - Sophomore Year

Table with columns for opponent, score, and statistics. Includes games against Liberty, Penn, Longwood, Grand Canyon, Vanderbilt, Old Dominion, L. Beach St., Pepperdine, Rutgers, South Carolina, Elon, Kentucky, Louisville, Ga. Tech, Florida State, UNC, NC State, Virginia Tech, Boston Col., Notre Dame, Wake Forest, Clemson, Virginia, Syracuse, Pitt, Wake Forest, Miami, UNC, vs. Syracuse, vs. Miami, vs. Notre Dame, Hampton, and Oregon.

R-Sophomore Haley Gorecki

2017-18 - Redshirt Sophomore Year

Table with columns for opponent, score, and statistics. Includes games against GCU, High Point, Villanova, ODU, Oregon State, Presbyterian, Ohio State, S. Carolina, and UNCG.

2015-16 - Freshman Year

Table with columns for opponent, score, and statistics. Includes games against Penn, Winthrop, Texas A&M, Army, and Idaho.

2015-16 - Freshman Year

Table with columns for opponent, score, and statistics. Includes games against Penn, Winthrop, and Texas A&M.

2015-16 - Freshman Year

Table with columns for opponent, score, and statistics. Includes game against Penn.

Winthrop	10	1-4	0-1	1-2	3-4	1	1	1	0	0	3
Texas A&M	3	0-0	0-0	0-0	0-0	1	0	0	0	0	0
Army	4	0-1	0-0	0-0	0-0	1	0	0	0	0	0
vs. Idaho	1	0-0	0-0	1-2	0-0	0	0	0	0	0	1
vs. Iowa State	6	3-4	0-0	0-0	0-1	2	1	0	0	1	6
vs. Texas State	11	0-0	0-0	1-2	0-0	1	0	0	0	0	1
Minnesota	5	0-2	0-1	0-0	0-1	1	0	0	0	0	0
at S.Carolina		DNP - CD									
UMass	6	1-2	1-2	0-0	0-1	1	0	1	0	0	3
Liberty	5	0-1	0-0	0-0	2-3	0	0	0	0	0	0
at Kentucky		DNP - CD									
WCU	16	3-4	1-1	1-1	0-3	0	0	2	0	0	8
UNCW	11	0-1	0-0	0-0	0-2	2	0	2	0	0	0
at Syracuse	14	0-1	0-1	0-1	3-6	0-2	1	0	1	0	3
Wake Forest	13	2-3	0-0	2-3	1-2	3	1	1	0	2	6
at Louisville	7	0-2	0-1	0-0	2-3	3	0	0	0	1	0
NC State	1	0-0	0-0	0-0	0-0	1	0	0	0	0	0
Boston College	11	1-2	1-2	0-0	1-1	0	0	1	0	0	3
at Clemson	21	1-3	1-2	1-2	1-2	1	0	1	0	0	4
UNC	14	0-4	0-3	0-0	0-2	2	1	0	0	0	0
at Pitt	4	1-1	0-0	0-0	0-0	0	1	0	0	2	2
Notre Dame	4	0-0	0-0	0-0	0-0	2	0	0	0	0	0
Virginia	6	0-0	0-0	0-0	0-0	1	0	0	0	0	0
at Miami	5	0-2	0-2	0-2	1-5	1	0	2	0	0	0
Florida State	9	1-2	0-0	1-1	0-1	0	0	3	0	0	3
at WFU	18	0-6	0-1	1-2	5-8	1	0	1	0	1	1
at Va. Tech	13	2-2	2-2	0-0	0-2	2	1	2	0	0	6
Georgia Tech	2	0-0	0-0	0-0	0-1	1	0	0	0	0	0
at UNC	9	0-1	0-0	0-0	0-0	3	1	1	0	0	0
vs. UVA	10	0-4	0-3	0-0	0-2	1	0	1	0	0	0
vs. Notre Dame	18	3-4	2-3	0-0	0-0	0	1	0	0	2	8

### Freshman Jayda Adams

#### 2017-18 - Freshman Year

	Min	FG-A	3G-A	FT-A	OR/TOT	PF	A	T	B	S	P	S	P	T
at GCU	5	0-0	0-0	0-0	0-0	0-0	2	0	3	0	0	0	0	0
High Point	8	1-2	0-1	0-0	0-1	2	0	0	0	1	2			
at Villanova	5	1-1	0-0	0-0	1-1	1	0	0	0	0	2			
at ODU	7	0-2	0-1	0-0	0-0	0-0	2	0	0	0	0	0	0	0
Oregon State	1	0-0	0-0	0-0	0-0	0-0	0	0	0	0	0	0	0	0
Presbyterian	10	0-1	0-1	0-0	1-2	2	0	0	0	1	0			
Ohio State	1	0-0	0-0	0-0	0-0	0-0	0	0	0	0	0	0	0	0
at S.Carolina	4	0-1	0-0	0-0	0-0	0-0	0	0	0	0	0	0	0	0
UNCG	6	0-1	0-1	0-2	0-0	1	0	0	0	1	0			

### Freshman Mikayla Boykin

#### 2017-18 - Freshman Year

	Min	FG-A	3G-A	FT-A	OR/TOT	PF	A	T	B	S	P	S	P	T
at GCU^	32	5-13	2-4	0-0	1-3	2	1	1	0	1	12			
High Point^	29	0-1	0-1	2-4	1-5	2	7	4	0	3	2			
at Villanova^	29	1-7	0-1	1-2	2-2	3	2	4	0	1	3			
at ODU^	31	1-10	0-1	2-2	1-3	2	4	0	0	1	4			
Oregon State^	31	2-4	2-3	0-0	0-2	1	4	2	0	3	6			
Presbyterian^	17	1-4	0-1	0-0	1-3	1	2	1	0	0	2			
Ohio State^	22	1-1	0-0	2-2	1-2	2	3	2	0	1	4			
at S.Carolina^	17	0-4	0-2	1-2	0-2	0	4	2	0	0	1			
UNCG	19	1-4	1-3	2-2	2-3	1	3	2	0	1	5			

### Freshman Madison Treece

#### 2017-18 - Freshman Year

	Min	FG-A	3G-A	FT-A	OR/TOT	PF	A	T	B	S	P	S	P	T
at GCU	2	0-0	0-0	0-0	0-0	0-0	0	0	0	0	0	0	0	0
High Point	3	0-2	0-0	0-0	0-0	0-0	1	0	0	0	0	0	0	0
at Villanova		DNP - CD												
at ODU	3	0-1	0-0	2-4	1-1	2	0	0	1	0	2			
Oregon State	1	0-0	0-0	0-0	0-0	0-0	0	0	0	0	0	0	0	0
Presbyterian	18	2-3	0-0	1-1	1-1	1	0	1	0	0	5			
Ohio State		DNP - CD												
at S.Carolina	12	0-3	0-1	0-0	0-1	3	0	0	0	0	0	0	0	0
UNCG	6	1-2	0-0	0-0	0-2	0	1	0	0	0	2			

### Freshman Jade Williams

#### 2017-18 - Freshman Year

	Min	FG-A	3G-A	FT-A	OR/TOT	PF	A	T	B	S	P	S	P	T
at GCU	6	0-2	0-0	0-0	1-2	0	0	0	0	0	0	0	0	0
High Point	14	2-3	0-0	0-0	3-5	3	1	1	2	1	4			
at Villanova	13	0-2	0-0	2-4	4-7	4	2	2	0	0	2			
at ODU	15	2-4	0-0	1-4	1-3	2	1	3	1	0	5			
Oregon State	1	0-1	0-0	0-0	1-1	0	0	1	0	0	0			
Presbyterian	5	3-4	0-0	0-2	0-1	0	1	1	0	1	6			
Ohio State	7	0-1	0-0	0-0	0-1	0	0	1	1	0	0			
at S.Carolina	3	1-1	0-0	0-2	2-2	3	0	0	0	0	2			
UNCG	10	3-4	0-0	0-0	0-2	2	0	0	0	0	6			

### R-Freshman Emily Schubert

#### 2017-18 - Freshman Year

	Min	FG-A	3G-A	FT-A	OR/TOT	PF	A	T	B	S	P	S	P	T
at GCU		DNP - CD												
High Point	2	0-0	0-0	0-0	0-0	1	0	0	1	0	0			
at Villanova		DNP - CD												
at ODU		DNP - CD												
Oregon State		DNP - CD												
Presbyterian	2	0-0	0-0	0-0	0-0	0	0	0	1	0	0			
Ohio State		DNP - CD												
at S.Carolina		DNP - CD												
UNCG	2	0-0	0-0	0-0	0-0	0	1	0	0	0	0			

### Sophomore Leaonna Odom

#### 2017-18 - Sophomore Year

	Min	FG-A	3G-A	FT-A	OR/TOT	PF	A	T	B	S	P	S	P	T
at GCU^	27	5-8	0-0	3-3	3-7	4	0	4	0	3	13			
High Point^	25	8-10	0-0	0-1	4-9	3	1	2	1	1	16			
at Villanova^	38	5-10	0-0	3-4	7-12	2	1	4	1	1	13			
at ODU^	16	1-5	0-0	1-2	3-5	4	0	2	0	1	3			
Oregon State^	38	8-11	0-0	0-0	2-8	2	2	0	0	1	16			
Presbyterian^	31	7-10	0-0	0-0	4-10	1	1	0	2	0	14			
Ohio State^	34	3-8	0-0	0-0	2-13	3	1	1	4	2	6			
at S.Carolina^	34	3-11	0-0	0-0	0-1	3	1	2	3	2	6			
UNCG^	19	4-5	0-0	0-0	0-4	3	2	0	0	1	8			

#### 2016-17 - Freshman Year

	Min	FG-A	3G-A	FT-A	OR/TOT	PF	A	T	B	S	P	S	P	T
at Liberty	13	3-7	0-0	2-2	2-3	3	1	1	0	1	8			
Penn	17	2-4	0-0	4-6	2-3	3	1	1	1	1	8			
Longwood	24	4-9	0-0	0-0	3-5	2	1	0	0	5	8			
Grand Canyon	21	6-8	0-0	0-0	1-6	3	1	1	1	0	12			
at Vanderbilt	23	4-8	0-0	1-4	4-4	4	1	2	0	0	9			
Old Dominion	18	3-8	0-0	2-3	2-3	4	1	2	0	1	8			
at L. Beach St.	29	5-8	0-0	2-2	1-4	2	1	3	2	0	12			
at Pepperdine	22	7-13	0-1	2-4	9-10	2	0	0	0	0	16			
at Rutgers	22	3-3	0-0	1-2	3-3	1	0	0	1	1	7			
South Carolina	27	3-8	0-1	0-0	3-6	2	1	0	0	5	6			
Elon	22	2-5	0-0	4-6	0-1	2	1	2	1	0	8			
Villanova^	33	3-5	0-0	1-3	2-4	1	1	3	1	0	7			
Kentucky^	14	2-5	0-0	0-0	1-4	2	1	2	2	1	4			
Louisville^	18	1-3	0-0	0-0	0-1	1	2	2	0	0	2			
at Ga. Tech^	9	0-2	0-0	0-0	0-0	3	1	0	2	0	0			
at Florida State^	31	3-7	0-0	1-2	4-6	2	0	0	1	2	7			
UNC^	30	7-9	0-0	1-3	5-7	0	1	2	2	2	15			
at NC State^	31	2-8	0-0	0-0	3-4	4	1	3	0	1	4			
Virginia Tech^	21	3-4	0-0	2-2	1-6	3	1	2	4	1	8			
at Boston Col.^	16	1-3	0-0	0-2	0-3	3	0	1	0	1	2			
at Notre Dame^	20	5-8	0-0	2-5	5-7	3	0	1	1	3	12			
Wake Forest^	30	-9	0-0	0-0	6-11	2	1	1	1	2	10			
Clemson^	29	4-9	0-0	0-0	1-5	1	0	1	2	3	8			
at Virginia^	25	2-5	0-0	0-0	1-5	4	0	0	3	0	4			
Syracuse^	21	3-4	0-0	0-0	1-3	3	0	1	1	0	6			
Pitt^	33	3-8	0-0	1-2	1-9	1	1	1	2	3	7			</

**Other Miscellaneous Statistics...**

**Defense Force 10-Second Violation**  
 Opponent.....-  
 Duke.....-

**Defense Force Shot Clock Violation**  
 Opponent.....4  
 Duke.....10

**Defense Force Five-Second Call**  
 Opponent.....-  
 Duke.....2

**Points In The Paint**  
 Opponent.....168  
 Duke.....332

**Points Off Turnovers**  
 Opponent.....93  
 Duke.....167

**Technical Fouls**  
 Opponent.....-  
 Duke.....-

**Jump Balls Controlled**  
 Opponent.....2  
 Duke.....7

Leaonna Odom (9)

**Largest Halftime Lead**  
 20 (38-18) at ODU, 11-22-17

**Largest Halftime Deficit**  
 11 (38-27) at South Carolina, 12-3-17

**Largest Duke Lead**  
 40 at ODU, 11-22-17

**Largest Duke Deficit**  
 22 at South Carolina, 12-3-17

**Largest Duke Win**  
 34 (79-45) vs. Presbyterian, 11-26-17

**Largest Duke Loss**  
 20 (72-52) at South Carolina, 12-3-17

**Longest Winning Streak**  
 1

**Longest Losing Streak**  
 -

**Largest Home Crowd**  
 5,535 vs. Ohio State, 11-30-17

**Largest Road Crowd**  
 13,054 at South Carolina, 12-3-17

**Highest FG% in 1st Quarter**  
 Duke.....61.5 at ODU, 11-22-17  
 Opp.....53.3 by USC, 12-3-17

**Highest FG% in 2nd Quarter**  
 Duke.....62.5 vs. UNCG, 12-7-17  
 Opp.....50.0 by USC, 12-3-17

**Highest FG% in 3rd Quarter**  
 Duke..60.0 vs. Presbyterian, 11-26-17  
 Opp.....56.3 by Villanova, 11-19-17

**Highest FG% in 4th Quarter**  
 Duke..72.7 vs. Presbyterian, 11-26-17  
 Opp.....53.8 by USC, 12-3-17

**Lowest FG% in 1st Quarter**  
 Duke.....35.7 at Villanova, 11-19-17  
 Opp.....15.4 by ODU, 11-22-17

**Lowest FG% in 2nd Quarter**  
 Duke.....26.8 at ODU, 11-22-17  
 Opp.....25.0 by High Point, 11-16-17

**Lowest FG% in 3rd Quarter**  
 Duke.....27.8 at USC, 12-3-17  
 Opp.....18.2 by UNCG, 12-7-17

**Lowest FG% in 4th Quarter**  
 Duke.....27.3 at GCU, 11-12-17  
 Opp.....15.4 by High Point, 11-16-17

**DUKE**  
**Top-Five FG% in Game**  
 57.4 vs. Presbyterian, 11-26-17  
 57.4 vs. UNCG, 12-7-17  
 50.0 vs. High Point, 11-16-17  
 45.8 vs. Oregon State, 11-25-17  
 45.6 vs. Ohio State, 11-30-17

**Top-Five Lowest FG% in Game**  
 37.5 at Villanova, 11-19-17  
 37.9 at USC, 12-3-17  
 43.8 at ODU, 11-22-17  
 44.3 at Grand Canyon, 11-12-17  
 45.6 vs. Ohio State, 11-30-17

**OPPONENT**  
**Top-Five FG% in Game**  
 50.8 by USC, 12-3-17  
 44.4 by Oregon State, 11-25-17  
 43.4 by Grand Canyon, 11-12-17  
 36.4 by Villanova, 11-19-17  
 35.3 by Presbyterian, 11-26-17

**Top-Five Lowest FG% in Game**  
 28.3 by ODU, 11-22-17  
 30.2 by High Point, 11-16-17  
 30.9 by UNCG, 12-7-17  
 32.4 by Ohio State, 11-30-17  
 35.3 by Presbyterian, 11-26-17

**Duke Records Broken/Tied in 2017-18...**

- Rebecca Greenwell became the first Duke player to amass 1,500 points, 600 rebounds and 200 made three-pointers at Villanova

**More Duke Numbers, Streaks**

Duke all-time record .....	890-388
Duke all-time ACC record (regular season only) .....	369-207
Duke's all-time overtime record .....	18-12
Consecutive games with at least one three-point FG.....	25
Consecutive games holding opponents under .500 shooting.....	1
Consecutive games holding opponents under 100 points.....	596
Consecutive games scoring at least 70 points .....	1

Other Miscellaneous Statistics Part II...

Date	Opponent	Result	Largest Lead				Paint		Off TOs		2nd Chance		Fastbreak		Rebounds		O. Rebounds		Bench Pts	
			Duke	Opp	Ties	LC	Duke	Opp	Duke	Opp	Duke	Opp	Duke	Opp	Duke	Opp	Duke	Opp	Duke	Opp
11/12	at Grand Canyon	W, 74-61	16	5	1	1	34	10	22	7	18	4	10	4	42	24	16	4	5	0
11/16	High Point	W, 77-50	29	--	3	0	50	8	19	12	10	7	14	0	46	26	18	12	14	5
11/19	at Villanova	L, 64-55	11	15	2	1	30	8	10	10	18	4	6	0	44	26	18	8	9	3
11/22	at Old Dominion	W, 84-51	40	-	-	-	22	16	17	3	17	9	17	2	48	26	16	14	20	7
11/25	Oregon State	W, 72-65	12	4	1	3	32	24	24	9	9	9	8	2	28	34	7	8	8	15
11/26	Presbyterian	W, 79-45	34	1	0	2	40	16	30	8	17	6	15	5	34	26	12	11	23	15
11/30	Ohio State	W, 69-60	17	-	3	-	36	18	6	14	12	14	12	7	49	30	13	12	11	3
12/3	at South Carolina	L, 72-52	3	22	1	1	32	54	9	19	8	17	8	10	26	40	10	15	8	15
12/7	UNC Greensboro	W, 85-54	36	1	2	2	56	16	30	11	6	10	26	5	37	30	10	11	22	17
12/10	Winthrop																			
12/19	Maine																			
12/21	Wyoming																			
12/29	Liberty																			
12/31	at Miami																			
1/4	at Louisville																			
1/7	NC State																			
1/11	at Wake Forest																			
1/14	Virginia																			
1/18	at Virginia Tech																			
1/21	at North Carolina																			
1/25	Boston College																			
1/28	at Pitt																			
2/1	Georgia Tech																			
2/4	Notre Dame																			
2/7	Wake Forest																			
2/11	at Clemson																			
2/15	at Syracuse																			
2/19	Florida State																			
2/25	North Carolina																			
<b>TOTAL:</b>			<b>40</b>	<b>22</b>			<b>56</b>	<b>54</b>	<b>30</b>	<b>19</b>	<b>18</b>	<b>17</b>	<b>26</b>	<b>10</b>	<b>49</b>	<b>40</b>	<b>18</b>	<b>15</b>	<b>23</b>	<b>17</b>
<b>AVG:</b>			<b>22.0</b>	<b>5.3</b>			<b>36.9</b>	<b>18.9</b>	<b>18.6</b>	<b>10.3</b>	<b>12.8</b>	<b>8.9</b>	<b>13.4</b>	<b>5.0</b>	<b>39.3</b>	<b>29.1</b>	<b>13.3</b>	<b>10.6</b>	<b>13.3</b>	<b>8.9</b>

Other Miscellaneous Statistics (Season/Career)...

Player	Individual Game Leaders										
	10+ Pts.	20+ Pts.	10+ Reb.	10+ Assists	3-Pt. Plays	Double-Doubles	Charges	First Sub	Points	Rebounds	Assists
J. Adams	-/-	-/-	-/-	-/-	-/-	-/-	-/-	-/-	-/-	-/-	-/-
M. Boykin	1/1	-/-	-/-	-/-	-/-	-/-	2/2	1/1	-/-	-/-	3/3
L. Brown	9/80	2/28	1/1	-/2	5/11	-/1	2/7	-/-	5/25	1/3	6/26
B.F. Davalos	-/-	-/-	-/-	-/-	-/-	-/-	-/-	2/2	-/-	-/-	-/-
H. Gorecki	2/3	-/-	-/-	-/-	1/2	-/-	-/1	4/5	-/-	-/-	1/2
R. Greenwell	6/86	2/27	-/12	-/-	-/19	-/12	-/3	-/-	3/37	2/27	-/21
K. Lambert	-/17	-/-	-/-	-/1	-/9	-/1	-/9	-/6	-/2	-/4	-/24
E. Mathias	5/8	1/1	2/3	-/-	-/4	2/2	1/8	-/13	2/2	1/2	2/5
L. Odom	5/15	-/1	3/5	-/-	1/2	2/3	-/4	-/15	-/1	3/13	-/-
E. Schubert	-/-	-/-	-/-	-/-	-/-	-/-	-/-	-/-	-/-	-/-	-/-
F. Suggs	-/-	-/-	-/-	-/-	1/4	-/-	-/3	1/1	-/-	-/1	-/-
M. Treece	-/-	-/-	-/-	-/-	1/1	-/-	-/-	-/-	-/-	-/-	-/-
J. Williams	-/-	-/-	-/-	-/-	-/-	-/-	-/-	1/1	-/-	-/1	1/1

**The Last Time it Happened...**

**Team**

**Individual**

**100 Points by a Team**

By Duke ..... 105 vs. Longwood (11/15/16)  
 By Opponent ..... 104 by Connecticut (11/13/98)

**30-Point Win**

By Duke ..... 79-45 vs. Presbyterian (11/26/17)  
 By Opponent ..... 86-50 by Syracuse (1/3/16)

**65 Percent Shooting by a Team**

By Duke ..... 650 vs. Texas State (11/28/15)  
 By Opponent ..... 655 by Virginia (1/25/94)

**60 Percent Shooting by a Team**

By Duke ..... 615 at Long Beach State (11/25/16)  
 By Opponent ..... 618 by Notre Dame (2/2/14)

**50 Percent Shooting by a Team**

By Duke ..... 574 vs. UNCG (12/7/17)  
 By Opponent ..... 517 by Notre Dame (3/5/17)

**Five Starters in Double-Digit Scoring**

By Duke ..... at Grand Canyon (11/12/17)  
 By Opponent ..... by Connecticut (12/29/14)

**30 or More Turnovers**

By Duke ..... 32 at Syracuse (1/3/16)  
 By Opponent ..... 34 by Longwood (11/15/16)

**Held to Less Than 10 Points in First Half**

Duke ..... --  
 Opponent ..... 3 by Monmouth (12/30/12)

**Duke Played a Ranked Opponent**

Duke Win ..... 69-60 vs. [8/8] Ohio State (11/30/17)  
 Duke Loss ..... 52-72 vs. [5/6] South Carolina (12/3/17)

**Overtime Game**

Duke Win ..... 74-67 at [12/11] North Carolina (1/25/15)  
 Duke Loss ..... 66-72 vs. [12/12] Texas A&M (11/18/15)

**Home Openers**

Duke Win ..... 77-50 vs. High Point (11/16/17)  
 Duke Loss ..... 82-57 vs. UNC Greensboro (12/1/77)

**Road/Neutral Openers**

Duke Win ..... 74-61 at Grand Canyon (11/12/17)  
 Duke Loss ..... 76-65 vs. [11] Notre Dame (11/17/04)

**Duke Was Ranked**

AP Number 1 ..... March 12, 2007  
 USA Today/ESPN Number 1 ..... March 13, 2007  
 AP Top 10 ..... March 13, 2017 -- No. 9  
 AP Top 25 ..... December 5, 2017 - No. 14

**40 Points by a Player**

By Duke ..... 43, Monique Currie at Miami (2/19/06)  
 By Opponent ..... 41, Jackie Stiles SW Missouri State (3/24/01)

**30 Points by a Player**

By Duke ..... 30, Rebecca Greenwell at North Carolina (2/26/17)  
 By Opponent ..... 33, Jennie Simms, Old Dominion (11/22/16)

**20 Rebounds by a Player**

By Duke ..... 20, Lexie Brown vs. Penn (11/13/16)  
 By Opponent ..... 22, Natasha Howard, Florida State (1/23/14)

**15 Rebounds by a Player**

By Duke ..... 15, Azurá Stevens vs. Notre Dame (3/4/16)  
 By Opponent ..... 15, Ruthy Hebard, Oregon (3/20/17)

**Two Players with 20 or More Points in Same Game**

By Duke ..... Erin Mathias [24] & Lexie Brown [20], UNCG (12/7/17)  
 By Opponent ..... Carlie Wagner [23] & Rachel Banham [21], Minn. (12/3/15)

**Three Players with 20 or More Points in Same Game**

By Duke .. I. Tillis [23], M. Bass [21] & A. Beard [20] vs. Stephen F. Austin (11/29/03)

**Two Players with 10 or More Rebs. in Same Game**

By Duke .. Leaonna Odom [13] & Erin Mathias [10] vs. Ohio State (11/30/17)  
 By Opponent .. A'Ja Wilson [11] & Alexis Jennings [10], South Carolina (12/3/17)

**Three Players with 10 or More Rebs. in Same Game**

By Duke .. R. Greenwell [14], K. Johnson [13] & E. Williams [10] at UNC (1/25/15)  
 By Opponent ... N. Bryant [12], H. Summers [11] & S. Watts [10], UNC (1/24/16)

**10 Assists by a Player**

By Duke ..... 13, Kyra Lambert at North Carolina (2/26/17)  
 By Opponent ..... 13, Lindsay Allen, Notre Dame (3/5/17)

**10 Steals by a Player**

By Duke ..... 10 by Alexis Jones vs. Notre Dame (2/2/14)  
 By Opponent ..... None

**Five Steals by a Player**

By Duke ..... 6, Lexie Brown vs. High Point (11/16/17)  
 By Opponent ..... 5, Emma Bockrath, High Point (11/16/17)

**Five Blocked Shots by a Player**

By Duke ..... 6, Oderah Chidom at Liberty (11/11/16)  
 By Opponent ..... 5, Natasha Howard, Florida State (1/23/14)

**Double-Double by a Player**

By Duke ..... Erin Mathias [10/10 rebounds], Ohio State (11/30/17)  
 By Opponent ..... A'Ja Wilson [18/11 rebounds], South Carolina (12/3/17)

**Triple-Double by a Player**

By Duke .. Ka'lia Johnson (18 pts., 11 rbs., 13 ast.) at Old Dominion (11/16/14)  
 By Opponent ..... none

**The Blue Devils' Record When**

At home	5-0
On the road	2-2
At a neutral site	0-0
Against a top 25 opponent	1-1
Against a top 10 opponent	1-1
Against a top 5 opponent	0-1
In tournaments	0-0
On television	6-1
In white uniforms	5-0
In blue uniforms	0-2
In black uniforms	2-0
In blue/pink uniforms	0-0
In white/pink uniforms	0-0
On Sunday	2-2
On Monday	0-0
On Tuesday	0-0
On Wednesday	2-0
On Thursday	2-0
On Friday	0-0
On Saturday	1-0
Day Games	3-2
Night Games	4-0
Overtime Games	0-0
When the starters are:	
Greenwell, Brown, Odom, Boykin, Mathias	6-2
Greenwell, Brown, Odom, Mathias, Faz Davalos	1-0
Leading at the half	7-1
Trailing at the half	0-1
Tied at the half	0-0
Outrebounding opponent	6-1
Opponent outrebounds Duke	1-1
Equal rebounds	0-0
FG% equal/over .500	3-0
FG% equal/over .400	5-0
FG% below .400	0-2
Opponent FG% equal/over .400	2-1
Opponent FG% below .400	5-1
Duke has more turnovers	1-2
Opponent has more turnovers	5-0
Teams have equal turnovers	1-0
Scoring below 50 points	0-0
Scoring 50-59 points	0-2
Scoring 60-69 points	1-0
Scoring 70-79 points	4-0
Scoring 80-89 points	2-0
Scoring 90-99 points	0-0
Scoring 100+ points	0-0
When leading after 3rd period	7-0
When leading w/ 5 minutes left	7-0
When trailing after 3rd period	0-2
When trailing w/ 5 minutes left	0-2
When tied w/ 5 minutes left	0-0

**Breaking Down the Quarters**

**Team**

**1st Quarter**

Most Points Scored	33
vs. Longwood, 11-15-16	
Fewest Points Scored	8
at Louisville, 1-10-16	
Highest FG%	75.0
vs. Western Carolina, 12-29-15	
Lowest FG%	23.5
at Miami, 2-7-16	

**2nd Quarter**

Most Points Scored	31
vs. Hampton, 3-18-17	
Fewest Points Scored	2
2x, last at Louisville, 1-10-16	
Highest FG%	66.7
3x, last vs. Hampton 3-18-17	
Lowest FG%	0.0
at Miami, 2-7-16	

**3rd Quarter**

Most Points Scored	34
vs. Wake Forest, 1-7-16	
Fewest Points Scored	8
at Villanova, 11-19-17	
Highest FG%	80.0
at Virginia Tech, 2-18-16	
Lowest FG%	27.3
vs. Virginia, 3-3-16	

**4th Quarter**

Most Points Scored	32
at North Carolina, 2-26-17	
Fewest Points Scored	5
at Syracuse, 1-3-16	
Highest FG%	86.7
at North Carolina, 2-26-17	
Lowest FG%	20.0
vs. Virginia, 3-3-16	

**Breaking Down the Quarters**

**Individual**

**1st Quarter**

Most Points Scored	14
2x, last Lexie Brown vs. Longwood, 11-15-16	
Most Rebounds	6
Oderah Chidom at Penn, 11-13-15	
Most Assists	5
Lexie Brown at Pepperdine, 11-27-16	
Most Blocks	3
3x, last Kendall Cooper vs. Pittsburgh, 2-12-17	
Most Steals	3
3x, last Lexie Brown vs. High Point, 11-16-17	

**2nd Quarter**

Most Points Scored	12
3x, last Lexie Brown vs. ODU, 11-22-16	
Most Rebounds	7
Azurá Stevens vs. Western Carolina, 12-29-15	
Most Assists	5
Kyra Lambert at North Carolina, 2-28-16	
Most Blocks	3
2x, last Oderah Chidom vs. UNC, 1-12-17	
Most Steals	4
Lexie Brown at Georgia Tech, 1-5-17	

**3rd Quarter**

Most Points Scored	12
2x, last Rebecca Greenwell vs. OSU, 11-25-17	
Most Rebounds	8
Amber Henson vs. North Carolina, 1-24-16	
Most Assists	4
4x, last Lexie Brown at GCU, 11-12-17	
Most Blocks	3
3x, last Kendall Cooper at Pepperdine, 11-27-16	
Most Steals	3
5x, last Lexie Brown vs. UNCG, 12-7-17	

**4th Quarter**

Most Points Scored	14
Rebecca Greenwell vs. Boston College, 1-17-16	
Most Rebounds	6
3x, last Azurá Stevens vs. UMass, 12-14-15	
Most Assists	8
Kyra Lambert at North Carolina, 2-26-17	
Most Blocks	2
9x, last Leaonna Odom vs. Ohio State, 11-30-17	
Most Steals	2
29x, last Lexie Brown vs. UNCG, 12-7-17	

## Duke Career Records...

### Duke Career Records

#### Points

- 2687 Alana Beard, 2001-04
- 2232 Chris Moreland, 1985-88
- 2122 Monique Currie, 2002-06
- 1955 Elizabeth Williams, 2012-15
- 1785 Sue Harnett, 1987-91
- 1761 Katie Meier, 1986-90
- 1712 Iciss Tillis, 2001-04
- 1704 Jasmine Thomas, 2008-11
- 1664 Tricia Liston, 2011-14
- 1620 Georgia Schweitzer, 1998-01
- 1618 Rebecca Greenwell, 2015-present**
- 1438 Chante Black, 2005-09
- 1409 Mistie Bass, 2003-06
- 1408 Abby Waner, 2006-09
- 1388 Kira Orr, 1994-97

#### Three-Point Field Goals Made

- 252 Tricia Liston, 2011-14
- 251 Rebecca Greenwell, 2015-present**
- 222 Abby Waner, 2006-09
- 202 Georgia Schweitzer, 1998-01
- 180 Jasmine Thomas, 2008-11
- 175 Jessica Foley, 2003-06
- 171 Vicki Krapohl, 2001-04
- 159 Jennifer Scanlon, 1993-96
- 133 Kira Orr, 1994-97
- 132 Hilary Howard, 1996-99

#### Three-Point Field Goals Attempted

- 691 Abby Waner, 2006-09
- 636 Rebecca Greenwell, 2015-present**
- 549 Tricia Liston, 2011-14
- 538 Jasmine Thomas, 2008-11
- 504 Georgia Schweitzer, 1998-01
- 490 Jessica Foley, 2003-06
- 420 Jennifer Scanlon, 1993-96
- 416 Kira Orr, 1994-97
- 403 Vicki Krapohl, 2001-04
- 367 Iciss Tillis, 2001-04

#### Three-Point Field Goal Percentage

##### (2-year minimum/100 attempts)

- .459 Tricia Liston, 2011-14
- .448 Laura Kurz, 2005-06
- .429 Ali Day, 1993-96
- .424 Vicki Krapohl, 2001-04
- .401 Georgia Schweitzer, 1998-01
- .395 Rebecca Greenwell, 2015-present**
- .395 Kristina Meiman, 1991-94
- .395 Nicole Erickson, 1998-99
- .394 Haley Peters, 2011-14
- .393 Leigh Morgan, 1987-90
- .385 Chelsea Gray, 2011-14

#### Free Throw Percentage

##### (2-year minimum/100 attempts)

- .921 Lexie Brown, 2017-present**
- .880 Nicole Erickson, 1998-99
- .856 Tricia Liston, 2011-14
- .821 Jessica Foley, 2003-06
- .814 Chelsea Gray, 2011-14
- .813 Rebecca Greenwell, 2015-present**
- .798 Ali Day, 1993-96
- .794 Kristina Meiman, 1992-96
- .794 Sheana Mosch, 2000-03
- .792 Alexis Jones, 2013-14

#### Field Goals Attempted

- 1906 Alana Beard, 2001-04
- 1674 Jasmine Thomas, 2008-11
- 1592 Monique Currie, 2002-06
- 1575 Elizabeth Williams, 2012-15
- 1537 Iciss Tillis, 2001-04
- 1448 Chris Moreland, 1985-88
- 1385 Sue Harnett, 1987-91
- 1374 Katie Meier, 1986-90
- 1285 Rebecca Greenwell, 2015-present**
- 1283 Abby Waner, 2006-09

#### Double Figure Scoring Games

- 127 Alana Beard, 2001-04
- 118 Monique Currie, 2002-06
- 110 Elizabeth Williams, 2012-15
- 106 Chris Moreland, 1985-88
- 102 Sue Harnett, 1987-91
- 92 Katie Meier, 1986-90
- 88 Iciss Tillis, 2001-04
- 86 Rebecca Greenwell, 2015-present**
- 81 Chante Black, 2005-09
- 80 Georgia Schweitzer, 1998-01

#### Games with 20 or More Points

- 69 Alana Beard, 2001-04
- 61 Chris Moreland, 1985-88
- 32 Katie Meier, 1986-90
- 29 Monique Currie, 2002-06
- 29 Sue Harnett, 1987-91
- 29 Tricia Liston, 2010-14
- 27 Rebecca Greenwell, 2015-present**
- 20 Elizabeth Williams, 2012-15
- 18 Iciss Tillis, 2001-04
- 17 Jasmine Thomas, 2008-11

#### Most 30+ Point Games in Career

- 6 Alana Beard, 2001-04
- 5 Chris Moreland, 1985-88
- 3 Rebecca Greenwell, 2015-present**
- 3 Monique Currie, 2002-06
- 3 Sue Harnett, 1987-91
- 2 Azura Stevens, 2015-16
- 2 Tyish Hall, 1994-97
- 2 Kira Orr, 1994-97
- 2 Alison Day, 1993-96

#### Games Started

- 136 Alana Beard, 2000-04
- 132 Elizabeth Williams, 2011-15
- 127 Monique Currie, 2001-06
- 127 Iciss Tillis, 2000-04
- 120 Mistie Williams, 2002-06
- 120 Jasmine Thomas, 2007-11
- 119 Wanisha Smith, 2004-08
- 118 Lindsey Harding, 2002-07
- 115 Georgia Schweitzer, 1997-01
- 111 Abby Waner, 2005-09
- 110 Hilary Howard, 1995-99
- 109 Chris Moreland, 1984-88
- 109 Haley Peters, 2010-04
- 107 Rebecca Greenwell, 2013-present**
- 104 Sarah Sullivan, 1982-97

#### Minutes

- 4285 Alana Beard, 2000-04
- 4162 Elizabeth Williams, 2011-15
- 4109 Jasmine Thomas, 2007-11
- 4013 Monique Currie, 2001-06
- 4008 Lindsey Harding, 2002-07
- 3943 Georgia Schweitzer, 1997-01
- 3886 Iciss Tillis, 2000-04
- 3759 Hilary Howard, 1995-99
- 3656 Wanisha Smith, 2004-08
- 3631 Rebecca Greenwell, 2013-present**
- 3623 Abby Waner, 2005-09
- 3586 Haley Peters, 2010-14
- 3575 Kira Orr, 1993-97
- 3549 Chris Moreland, 1984-88
- 3399 Tricia Liston, 2010-14

## ACC/NCAA Career Records...

## ACC Career Records

## Free Throw Percentage

1. .883 (212-240) **Lexie Brown, Duke (2014, '16-present)**
2. .880 (161-183) Nicole Erickson, Duke (1998-99)
3. .866 (362-418) Kristi Toliver, Maryland (2005-09)
4. .860 (181-211) Stefanie Yderstrom, Miami (2009-13)
5. .856 (280-327) Tricia Liston, Duke (2010-14)
6. .853 (407-477) Linda Page, NC State (1982-85)
7. .848 (335-395) Amy Geren, Clemson (1996-99)
- .848 (324-383) Dominique Wilson, NC State (2014-17)
9. .846 (204-241) Vanessa Panousis, Virginia Tech (2013-17)
10. .844 (347-411) Jennifer Howard, NC State (1994-97)
11. .840 (241-287) Renee Taylor, Miami (2005-07)
- .840 (474-564) Ivory Latta, North Carolina (2003-07)
13. .837 (170-203) Leticia Romero, Florida State (2014-17)
14. .831 (241-290) Melissa Mahoney, Virginia (1979-82)
15. .830 (410-494) Nicole Levesque, Wake Forest (1991-94)
16. .825 (454-550) Shenise Johnson, Miami (2008-12)
17. .823 (163-198) Lisa Brooks, Wake Forest (1981-84)
18. .815 (229-281) Mara Freshour, Florida State (2005-09)
19. .814 (320-393) Karen Lounsbury, Georgia Tech (1989-92)
- .814 (262-322) Chelsea Gray, Duke (2010-14)
21. **.813 (265-326) Rebecca Greenwell, Duke (2015-present)**
22. .812 (333-410) Janet Knight, Clemson (1983-86)
- .812 (216-266) Tara Saunooke, Clemson (1992-95)
24. .811 (505-623) Dawn Staley, Virginia (1989-92)
25. .810 (481-594) Marissa Coleman, Maryland (2005-09)

## Three-Point Field Goals Made

1. 345 Ivory Latta, North Carolina (2003-07)
2. 322 Kelly Hughes, Boston College (2013-17)
3. 320 Brianna Butler, Syracuse (2013-16)
4. 315 Jennifer Howard, NC State (1994-97)
5. 300 Kristi Toliver, Maryland (2005-09)
6. 272 Riquna Williams, Miami (2008-12)
7. 269 Chioma Nnamaka, Georgia Tech (2004-08)
- 269 Vanessa Panousis, Virginia Tech (2013-17)
9. 267 Cotelia Bond-Young, Wake Forest (2003-06)
10. 253 Nicole Boudreau, Boston College (2012-16)
11. 252 Tara Saunooke, Clemson (1992-95)
- 252 Kerri Shields, Boston College (2009-13)
- 252 Tricia Liston, Duke (2010-14)
14. 251 Coretta Brown, North Carolina (2000-03)
- 251 Rebecca Greenwell, Duke (2015-present)**
16. 241 Danielle Donehew, Georgia Tech (1997-00)
17. 240 Marissa Kastenek, NC State (2009-13)
18. 237 Alex Montgomery, Georgia Tech (2007-11)
- 237 Mickel Picco, Boston College (2006-10)
20. 236 Nikki Teasley, North Carolina (1998-00, 02)
21. 230 Tammy Gibson, NC State (1991-95)
22. 228 Stefanie Yderstrom, Miami (2009-13)
23. 227 Stephanie Lawrence, North Carolina (1992-95)
24. 226 Italee Lucas, North Carolina (2007-11)
25. 222 Abby Waner, Duke (2005-09)

## Three-Point Field Goals Attempted

1. 1029 Brianna Butler, Syracuse (2013-16)
2. 886 Ivory Latta, North Carolina (2003-07)
3. 876 Vanessa Panousis, Virginia Tech (2013-17)
4. 839 Riquna Williams, Miami (2008-12)
5. 810 Kelly Hughes, Boston College (2013-17)
6. 806 Cotelia Bond-Young, Wake Forest (2003-06)
7. 736 Kristi Toliver, Maryland (2005-09)
8. 733 Chioma Nnamaka, Georgia Tech (2004-08)
9. 732 Kerri Shields, Boston College (2009-13)
10. 717 Jennifer Howard, NC State (1994-97)
11. 700 Mickel Picco, Boston College (2006-10)
12. 694 Nikki Teasley, North Carolina (1998-00, 02)
13. 691 Abby Waner, Duke (2005-09)
14. 690 Stefanie Yderstrom, Miami (2009-13)
15. 687 Nicole Boudreau, Boston College (2012-16)
16. 686 Alex Montgomery, Georgia Tech (2007-11)
17. 668 Marissa Kastenek, NC State (2009-13)
18. 666 Tora Suber, Virginia (1994-97)
19. 661 Coretta Brown, North Carolina (2000-03)
20. 659 Danielle Donehew, Georgia Tech (1997-00)
21. 653 Italee Lucas, North Carolina (2007-11)
- 22. 636 Rebecca Greenwell, Duke (2015-present)**
23. 634 Stephanie Lawrence, North Carolina (1992-95)
24. 598 Tammy Gibson, NC State (1991-95)
25. 586 Tara Saunooke, Clemson (1992-95)
- 586 Jessica Thomas, Miami (2014-17)

## NCAA Career Records

## Blocked Shots

1. 748 Brittney Griner, Baylor (2010-13)
2. 663 Louella Tomlinson, St. Mary's (2008-11)
3. 503 Alyssa DeHaan, Michigan State (2007-10)
4. 480 Sandora Irvin, TCU (2002-05)
5. 455 Kailyn Williams, Bethune-Cookman (2014-17)
6. 447 Brooke McAfee, IUPUI (2003-06)
7. 446 Courtney Paris, Oklahoma (2006-09)
7. 436 Jasmine Joyner, Chattanooga (2014-17)
8. 434 Alison Bales, Duke (2004-07)
9. 428 Genia Miller, Cal St. Fullerton (1988-91)
10. 426 Elizabeth Williams, Duke (2012-15)
11. 425 Ruth Hamblin, Oregon St. (2013-2016)
12. 414 Breanna Stewart, UConn (2013-16)
13. 413 Heidi Gillingham, Vanderbilt (1991-94)
14. 406 Zane Teilane, Western Ill. (2003-06)
15. 396 Rebecca Lobo, UConn (1992-95)
16. 384 Jessica Davenport, Ohio State (2004-07)
17. 377 Marita Payne, Auburn (2003-06)
18. 372 Chris Enger, San Diego (1990-93)
- 372 Ashley Gayle, Texas (2009-12)
20. 370 Kara Wolters, Connecticut (1994-97)
- 370 Ruth Riley, Notre Dame (1998-01)
22. 368 Angela Gorsica, Vanderbilt (1994-97)
23. 367 Trish Andrew, Michigan (1990-93)
24. 364 Danielle Fiacco, Lafayette (2011-14)
25. 361 Amber Harris, Xavier (2008-11)
26. 359 Denise Hogue, Col. of Charleston (1990-93)

## Approaching...

- 350 Bego Faz Davalos, Duke/Fresno State (2015-present)

112/121 Duke 74, Grand Canyon 61

November 12, 2017  
at GCU Arena (Phoenix, Ariz.)

Duke	FG	3FG	FT	REB	PF	TP	A	T	O	B	S	Min
Brown g	4-12	0-3	5-6	0-6-6	2	13	7	4	0	1	36	
Odom f	5-8	0-0	3-3	3-4-7	4	13	0	4	0	3	27	
Boykin g	5-13	2-4	0-0	1-2-3	2	12	1	1	0	1	32	
Greenwell g	6-9	5-6	2-2	3-5-8	3	19	5	1	0	2	37	
Mathias f	5-10	0-0	2-2	6-4-10	2	12	1	2	0	2	32	
Gorecki	0-1	0-0	1-2	0-0-0	0	1	1	0	0	1	7	
Suggs	0-1	0-1	0-0	0-0-0	0	0	0	0	0	1	4	
Faz Davalos	2-4	0-0	0-3	1-3-4	1	4	2	1	0	0	12	
Williams	0-2	0-0	0-0	1-1-2	0	0	0	0	0	0	6	
Adams	0-0	0-0	0-0	0-0-0	2	0	0	3	0	0	5	
Treece	0-0	0-0	0-0	0-0-0	0	0	0	0	0	0	2	
TEAM	1-1-1											
Totals	27-61	7-14	13-18	16-26-42	16	74	17	16	0	11	200	
Pct.	44.3	50.0	72.2	DB: 3								

FG's (1Q: 7-19, 36.8%; 2Q: 9-16, 56.3%; 3Q: 8-15, 53.3%; 4Q: 3-11, 27.3%)  
3FG's (1Q: 5-8, 62.5%; 2Q: 0-1, 0.0%; 3Q: 1-2, 50.0%; 4Q: 1-3, 33.3%)  
FT's (1Q: 0-1, 0.0%; 2Q: 3-5, 60.0%; 3Q: 0-2, 0.0%; 4Q: 10-10, 100.0%)

Grand Canyon FG 3FG FT REB PF TP A TO B S Min

Lee c	4-5	0-0	2-2	1-2-3	3	10	2	0	0	0	32	
Touchard g	2-6	2-6	0-0	0-4-4	4	6	4	4	0	0	40	
Gajewski g	5-13	3-9	2-2	0-3-3	2	15	5	5	0	2	40	
Murphy g	6-12	3-8	0-0	0-0-0	4	15	0	4	1	0	36	
Mobley g	6-11	0-0	3-4	3-6-9	3	15	4	2	0	0	36	
Jackson	0-4	0-1	0-0	0-0-0	0	0	2	0	0	0	6	
Akula	0-1	0-1	0-0	0-0-0	0	0	0	0	0	0	3	
Williams	0-1	0-0	0-0	0-2-2	0	0	1	0	0	0	7	
TEAM	0-3-3											
Totals	23-53	8-25	7-8	4-20-24	16	61	17	15	1	2	200	
Pct.	43.4	32.0	87.5	DB: 1								

FG's (1Q: 6-12, 50.0%; 2Q: 6-15, 40.0%; 3Q: 8-15, 53.3%; 4Q: 3-11, 27.3%)  
3FG's (1Q: 1-5, 20.0%; 2Q: 1-7, 14.3%; 3Q: 4-7, 57.1%; 4Q: 2-6, 33.3%)  
FT's (1Q: 1-2, 50.0%; 2Q: 4-4, 100.0%; 3Q: 0-0, 0.0%; 4Q: 2-2, 100.0%)

Officials: Michol Murray, In'Fini Robinson, Alecia Murray  
Attendance: 1,683 • Technical Fouls: None

Score by Periods

	1st	2nd	3rd	4th	Total
Duke	19	21	17	17	74
Grand Canyon	14	17	20	10	61

111/121 Duke 77, High Point 50

November 16, 2017  
Cameron Indoor Stadium (Durham, N.C.)

Duke	FG	3FG	FT	REB	PF	TP	A	T	O	B	S	Min
Brown g	6-11	1-2	11-11	1-3-4	2	24	3	6	0	6	33	
Odom f	8-10	0-0	0-1	4-5-9	3	16	1	2	1	1	25	
Boykin g	0-1	0-1	2-4	1-4-5	2	2	7	4	0	3	32	
Greenwell g	5-12	0-3	0-0	2-6-8	1	10	1	1	0	2	31	
Mathias f	5-10	0-0	1-2	3-4-7	2	11	0	1	2	0	23	
Gorecki	0-1	0-1	3-4	0-0-0	0	3	0	2	0	2	6	
Suggs	0-2	0-1	3-6	3-0-3	1	3	1	0	0	0	11	
Faz Davalos	1-2	0-0	0-0	0-3-3	0	2	2	2	1	0	15	
Williams	2-3	0-0	0-0	3-2-5	3	4	1	2	1	2	14	
Schubert	0-0	0-0	0-0	0-0-0	1	0	0	0	1	0	2	
Adams	1-2	0-1	0-0	0-1-1	2	2	0	0	0	1	8	
Treece	0-2	0-0	0-0	0-0-0	1	0	0	0	0	0	3	
TEAM	1-0-1											
Totals	28-56	1-9	20-28	18-28-46	18	77	16	19	7	16	200	
Pct.	50.0	11.1	71.4	DB: 4								

FG's (1Q: 7-13, 53.8%; 2Q: 7-15, 46.7%; 3Q: 8-14, 57.1%; 4Q: 6-14, 42.9%)  
3FG's (1Q: 0-4, 0.0%; 2Q: 1-3, 33.3%; 3Q: 0-0, 0.0%; 4Q: 0-2, 0.0%)  
FT's (1Q: 9-10, 90.0%; 2Q: 1-2, 50.0%; 3Q: 6-10, 60.0%; 4Q: 4-6, 66.7%)

High Point FG 3FG FT REB PF TP A TO B S Min

Morgan f	2-3	0-0	0-0	3-0-3	3	4	1	5	0	2	29	
Curie f	2-4	0-0	0-0	1-1-2	4	4	1	0	0	0	15	
Brown g	3-6	3-6	0-0	0-1-1	5	9	2	1	0	1	29	
Bockrath g	5-18	3-9	8-10	4-6-10	4	21	1	4	0	5	38	
Edwards g	2-6	0-0	3-4	0-1-1	3	7	1	3	0	2	40	
Harris	2-9	0-6	1-3	0-1-1	3	5	3	3	0	0	24	
Thomas	0-4	0-1	0-0	3-0-3	1	0	0	0	0	0	7	
Vanslooten	0-3	0-0	0-2	1-3-4	4	0	0	1	2	1	18	
TEAM	0-1-1											
Totals	16-53	6-22	12-19	12-14-26	27	50	9	22	2	11	200	
Pct.	30.2	27.3	63.2	DB: 4								

FG's (1Q: 7-17, 41.2%; 2Q: 3-12, 25.0%; 3Q: 4-11, 36.4%; 4Q: 2-13, 15.4%)  
3FG's (1Q: 2-6, 33.3%; 2Q: 2-9, 22.2%; 3Q: 2-5, 40.0%; 4Q: 6-22, 27.3%)  
FT's (1Q: 3-3, 100.0%; 2Q: 1-6, 16.7%; 3Q: 2-2, 100.0%; 4Q: 6-8, 75.0%)

Officials: Norma Jones, Daryl Humphrey, Jenna Schroeder  
Attendance: 2,063 • Technical Fouls: None

Score by Periods

	1st	2nd	3rd	4th	Total
High Point	19	9	12	10	50
Duke	23	16	28	16	77

1111 Duke 55, Villanova 64

November 19, 2017  
Jake Nevin Field House (Villanova, Pa.)

Duke	FG	3FG	FT	REB	PF	TP	A	T	O	B	S	Min
Brown g	6-13	1-5	3-3	0-3-3	5	16	1	2	0	1	29	
Odom f	5-10	0-0	3-4	7-5-12	2	13	1	4	1	1	38	
Boykin g	1-7	0-1	1-2	2-0-2	3	3	2	4	0	1	29	
Greenwell g	4-14	1-5	0-0	1-5-6	3	9	0	1	0	1	37	
Mathias f	2-5	0-0	1-2	2-4-6	2	5	2	1	0	1	25	
Gorecki	2-3	0-1	1-1	0-1-1	0	5	0	0	0	0	16	
Suggs	0-1	0-0	0-0	0-0-0	1	0	0	0	0	0	3	
Faz Davalos	0-0	0-0	0-0	0-2-2	0	0	0	1	0	0	5	
Williams	0-2	0-0	2-4	4-3-7	4	2	2	2	0	0	13	
Adams	1-1	0-0	0-0	1-0-1	1	2	0	0	0	0	5	
TEAM	1-3-4											
Totals	21-56	2-12	11-16	18-26-42	21	55	8	15	1	5	200	
Pct.	37.5	16.7	68.8	DB: 3								

FG's (1Q: 5-14, 35.7%; 2Q: 6-13, 46.2%; 3Q: 4-12, 33.3%; 4Q: 6-17, 35.3%)  
3FG's (1Q: 0-4, 0.0%; 2Q: 1-2, 50.0%; 3Q: 0-2, 0.0%; 4Q: 1-4, 25.0%)  
FT's (1Q: 2-2, 100.0%; 2Q: 3-5, 60.0%; 3Q: 0-0, 0.0%; 4Q: 6-9, 66.7%)

Villanova FG 3FG FT REB PF TP A TO B S Min

Tucker f	4-14	2-11	0-0	0-0-0	3	10	1	1	1	0	26	
Quinn c	0-3	0-1	2-2	4-2-6	1	2	2	3	2	1	26	
Louin g	4-10	3-7	6-7	0-9-9	2	17	4	0	1	4	38	
Jekot g	8-14	7-9	0-0	1-2-3	1	23	2	2	0	1	37	
Hahn g	3-9	3-9	0-0	0-1-1	3	9	5	1	0	0	37	
Onken	0-0	0-0	0-0	0-0-0	0	0	0	0	0	0	1	
Herlihy, Bri	1-3	0-2	0-0	0-0-0	1	2	1	0	2	1	12	
Herlihy, Brad	0-2	0-1	0-0	0-0-0	1	0	0	0	0	0	6	
Gedaka	0-0	0-0	1-2	1-3-4	1	1	0	1	0	1	16	
Stant	0-0	0-0	0-0	0-0-0	2	0	0	0	0	0	1	
TEAM	2-1-3											
Totals	20-55	15-40	9-11	8-18-26	15	64	15	8	6	8	200	
Pct.	36.4	37.5	81.8	DB: 3.1								

FG's (1Q: 3-17, 17.6%; 2Q: 4-13, 30.8%; 3Q: 9-16, 56.3%; 4Q: 4-9, 44.4%)  
3FG's (1Q: 2-12, 16.7%; 2Q: 3-8, 37.5%; 3Q: 7-13, 53.8%; 4Q: 3-7, 42.9%)  
FT's (1Q: 2-2, 100.0%; 2Q: 1-2, 50.0%; 3Q: 1-1, 100.0%; 4Q: 5-6, 83.3%)

Officials: Joe Vaszily, Karen Preato, Tom Danaher  
Attendance: 1,421 • Technical Fouls: None

Score by Periods

	1st	2nd	3rd	4th	Total
Duke	12	16	8	19	55
Villanova	10	12	26	16	64

1161 Duke 84, Old Dominion 51

November 22, 2017  
Ted Constant Center (Norfolk, Va.)

Duke	FG	3FG	FT	REB	PF	TP	A	T	O	B	S	Min
Brown g	10-15	4-6	4-4	2-6-8	0	28	8	2	0	3	33	
Odom f	1-5	0-0	1-2	3-2-5	4	3	2	0	1	1	16	
Boykin g	1-10	0-1	2-2	1-2-3	2	4	4	0	0	1	31	
Greenwell g	8-10	6-7	0-0	0-9-9	1	22	0	0	0	2	34	
Mathias f	3-6	0-0	1-2	3-3-6	1	7	1	2	1	0	28	
Gorecki	3-8	3-5	2-2	0-3-3	1	11	2	0	0	0	13	
Suggs	0-1	0-0	0-0	1-1-2	1	0	0	0	0	0	6	
Faz Davalos	0-2	0-0	2-4	1-2-3	0	2	1	0	1	0	14	
Williams	2-4	0-0	1-4	1-2-3	2	5	1	3	1	0	15	
Adams	0-2	0-1	0-0	0-0-0	0	2	0	0	0	0	7	
Treece	0-1	0-0	2-4	1-0-1	2	2	0	0	1	0	3	
TEAM	3-2-5											
Totals	28-64	13-20	15-24	16-32-48	14	84	19	9	4	7	200	
Pct.	43.8	65.0	62.5	DB: 6								

FG's (1Q: 8-13, 61.5%; 2Q: 6-21, 28.6%; 3Q: 8-14, 57.1%; 4Q: 6-16, 37.5%)  
3FG's (1Q: 2-3, 66.7%; 2Q: 3-7, 42.9%; 3Q: 4-6, 66.7%; 4Q: 4-4, 100.0%)  
FT's (1Q: 4-5, 80

**114/161 Duke 69, 18/81 Ohio State 60**

November 30, 2017  
at Cameron Indoor Stadium (Durham, N.C.)

Duke	FG	3FG	FT	REB	PF	TP	A	TO	B	S	Min
Brown g	7-14	4-7	1-2	0-5-5	2	19	2	3	0	1	35
Odom f	3-8	0-0	0-0	2-11-13	3	6	1	1	4	2	34
Boykin g	1-1	0-0	2-2	1-1-2	2	4	3	2	0	1	22
Greenwell g	7-17	2-4	3-	1-3-4	3	19	1	4	0	2	36
Mathias f	5-8	0-0	0-0	4-6-10	2	10	4	4	1	0	35
Gorecki	3-8	2-6	3-6	0-7-7	1	11	4	3	0	0	26
Suggs	0-0	0-0	0-0	0-0-0	0	0	0	0	0	0	1
Faz Davalos	0-0	0-0	0-0	0-1-1	1	0	0	1	0	0	3
Williams	0-1	0-0	0-0	0-1-1	1	0	0	1	1	0	7
Adams	0-0	0-0	0-0	0-0-0	0	0	0	0	0	0	1
TEAM				5-1-6							2
<b>Totals</b>	<b>26-57</b>	<b>8-17</b>	<b>9-14</b>	<b>13-36-49</b>	<b>14</b>	<b>69</b>	<b>15</b>	<b>21</b>	<b>6</b>	<b>6</b>	<b>200</b>
<b>Pct.</b>	<b>45.6</b>	<b>47.1</b>	<b>64.3</b>	<b>DB: 5</b>							

FG's (1Q: 11-19, 57.9%; 2Q: 6-11, 54.5%; 3Q: 4-13, 30.8%; 4Q: 5-14, 35.7%)  
 3FG's (1Q: 4-7, 57.1%; 2Q: 2-4, 50.0%; 3Q: 1-3, 33.3%; 4Q: 1-3, 33.3%)  
 FT's (1Q: 0-0, 0.0%; 2Q: 3-4, 75.0%; 3Q: 5-6, 83.3%; 4Q: 1-4, 25.0%)

Ohio State	FG	3FG	FT	REB	PF	TP	A	TO	B	S	Min
Mavunga f	3-9	0-0	1-2	2-5-7	2	7	0	3	3	2	30
Mitchell g	9-27	4-17	2-3	0-1-1	3	24	5	1	0	3	39
Calhoun g	3-8	2-6	0-0	0-4-4	3	8	0	3	2	1	32
Harper g	5-16	2-6	0-0	5-3-8	2	12	3	1	0	2	31
Doss g	2-8	2-6	0-0	1-2-3	3	6	3	2	1	4	36
Hart	0-1	0-1	0-0	2-2-4	1	0	0	0	1	0	15
Waterman	1-2	0-0	1-1	1-1-2	3	3	1	0	1	0	17
TEAM				1-0-1							17
<b>Totals</b>	<b>23-71</b>	<b>10-36</b>	<b>4-6</b>	<b>12-18-30</b>	<b>17</b>	<b>60</b>	<b>12</b>	<b>10</b>	<b>8</b>	<b>12</b>	<b>200</b>
<b>Pct.</b>	<b>32.4</b>	<b>27.8</b>	<b>66.7</b>	<b>DB: 2</b>							

FG's (1Q: 6-20, 30.0%; 2Q: 5-17, 29.4%; 3Q: 9-20, 45.0%; 4Q: 3-14, 21.4%)  
 3FG's (1Q: 3-10, 30.0%; 2Q: 2-8, 25.0%; 3Q: 3-11, 27.3%; 4Q: 2-7, 28.6%)  
 FT's (1Q: 2-2, 100.0%; 2Q: 2-3, 66.7%; 3Q: 0-1, 0.0%; 4Q: 0-0, 0.0%)

Officials: Dee Kantner, Joseph Vaszyly, Maj Forsberg  
 Attendance: 5,535 • Technical Fouls: None

Score by Periods	1st	2nd	3rd	4th	Total
Ohio State	17	14	21	8	60
Duke	26	17	14	12	69

**114/161 Duke 52, 15/61 South Carolina 72**

December 3, 2017  
at Colonial Life Arena (Columbia, S.C.)

Duke	FG	3FG	FT	REB	PF	TP	A	TO	B	S	Min
Brown g	5-14	1-4	2-2	0-1-1	1	13	4	0	0	3	34
Odom f	3-11	0-0	0-0	0-1-1	3	6	1	2	3	2	34
Boykin g	0-4	0-2	1-2	0-2-2	0	1	4	2	0	0	17
Greenwell g	3-8	0-2	2-2	2-4-6	0	8	2	2	1	2	38
Mathias f	7-9	0-0	2-2	2-4-6	5	16	1	2	2	0	29
Gorecki	0-2	0-1	0-0	0-2-2	1	0	2	4	0	0	13
Suggs	0-0	0-0	0-0	0-0-0	1	0	0	0	0	0	7
Faz Davalos	3-5	0-0	0-0	0-1-1	1	6	0	1	0	2	9
Williams	1-1	0-0	0-2	2-0-2	3	2	0	0	0	0	3
Adams	0-1	0-0	0-0	0-0-0	0	0	0	0	0	0	4
Treece	0-3	0-1	0-0	0-1-1	3	0	0	0	0	0	12
TEAM				4-0-4							12
<b>Totals</b>	<b>22-58</b>	<b>1-10</b>	<b>7-10</b>	<b>10-16-26</b>	<b>18</b>	<b>52</b>	<b>14</b>	<b>13</b>	<b>6</b>	<b>9</b>	<b>200</b>
<b>Pct.</b>	<b>37.9</b>	<b>10.0</b>	<b>70.0</b>	<b>DB: 3,2</b>							

FG's (1Q: 6-13, 46.2%; 2Q: 5-11, 45.5%; 3Q: 5-18, 27.8%; 4Q: 6-16, 37.5%)  
 3FG's (1Q: 1-4, 25.0%; 2Q: 0-1, 0.0%; 3Q: 0-3, 0.0%; 4Q: 0-2, 0.0%)  
 FT's (1Q: 0-0, 0.0%; 2Q: 4-4, 100.0%; 3Q: 0-0, 0.0%; 4Q: 3-6, 50.0%)

South Carolina	FG	3FG	FT	REB	PF	TP	A	TO	B	S	Min
Wilson f	8-16	0-0	2-5	3-8-11	1	18	1	1	0	2	29
Jennings f	9-15	0-0	3-8	8-2-10	3	21	2	3	1	2	33
Cliney g	3-8	0-2	0-0	1-3-4	1	6	5	1	1	1	37
Jackson g	2-5	0-1	0-0	2-2-4	1	4	1	3	0	0	34
Harris g	4-8	0-2	0-0	0-5-5	0	8	5	2	0	2	34
Patrick	1-4	1-3	0-0	0-0-0	2	3	1	0	0	0	14
Harrigan	3-4	0-0	2-2	0-1-1	0	8	1	1	1	0	14
Williams	0-1	0-0	0-0	0-0-0	0	0	0	0	0	0	1
Grissett	2-2	0-0	0-0	0-0-0	1	4	0	0	0	0	4
TEAM				1-4-5							1
<b>Totals</b>	<b>32-63</b>	<b>1-8</b>	<b>7-15</b>	<b>15-25-40</b>	<b>9</b>	<b>72</b>	<b>16</b>	<b>12</b>	<b>3</b>	<b>7</b>	<b>200</b>
<b>Pct.</b>	<b>50.8</b>	<b>12.5</b>	<b>46.7</b>	<b>DB: 6,1</b>							

FG's (1Q: 8-15, 53.3%; 2Q: 9-18, 50.0%; 3Q: 8-17, 47.1%; 4Q: 7-13, 53.8%)  
 3FG's (1Q: 0-2, 0.0%; 2Q: 1-3, 33.3%; 3Q: 0-2, 0.0%; 4Q: 0-1, 0.0%)  
 FT's (1Q: 2-2, 100.0%; 2Q: 1-4, 25.0%; 3Q: 1-3, 33.3%; 4Q: 3-6, 50.0%)

Officials: Mark Zentz, Cameron Inouye, Denise Brooks  
 Attendance: 13,054 • Technical Fouls: None

Score by Periods	1st	2nd	3rd	4th	Total
Duke	13	14	10	15	52
South Carolina	18	20	17	17	72

**114/141 Duke 85, UNC Greensboro 54**

December 7, 2017  
at Cameron Indoor Stadium (Durham, N.C.)

UNCG	FG	3FG	FT	REB	PF	TP	A	TO	B	S	Min
Ngandjui f	1-6	0-0	0-0	1-3-4	2	2	1	3	0	3	22
Ajemba c	5-10	0-0	3-4	6-8-14	0	13	0	1	1	1	34
Willey g	2-10	2-8	9-13	0-2-2	2	15	1	5	0	0	32
Fier g	1-4	0-1	0-0	0-2-2	0	2	1	3	0	1	21
Soliman g	2-8	1-5	0-0	0-1-1	1	5	2	4	0	0	32
Howard	0-0	0-0	0-0	0-2-2	0	0	1	1	0	0	5
Pitchford	1-4	1-3	0-0	0-0-0	0	3	2	2	0	1	18
Miller	0-0	0-0	0-0	0-0-0	0	0	0	1	0	0	1
Crudup	0-1	0-1	0-0	0-0-0	0	0	0	0	0	0	2
Yelverton	1-5	1-5	2-2	0-1-1	0	5	1	0	0	0	16
Twitty	3-6	0-0	1-1	1-0-1	0	7	0	1	0	1	15
Milisis	1-1	0-0	0-0	1-0-1	0	2	0	0	0	0	2
TEAM				2-0-2							1
<b>Totals</b>	<b>17-55</b>	<b>5-23</b>	<b>15-20</b>	<b>11-19-30</b>	<b>5</b>	<b>54</b>	<b>9</b>	<b>22</b>	<b>1</b>	<b>7</b>	<b>200</b>
<b>Pct.</b>	<b>30.9</b>	<b>21.7</b>	<b>75</b>	<b>DB: 5</b>							

FG's (1Q: 4-16, 25.0%; 2Q: 5-14, 35.7%; 3Q: 2-11, 18.2%; 4Q: 6-14, 42.9%)  
 3FG's (1Q: 1-5, 20.0%; 2Q: 2-5, 40.0%; 3Q: 0-4, 0.0%; 4Q: 2-9, 22.2%)  
 FT's (1Q: 6-6, 100.0%; 2Q: 2-2, 100.0%; 3Q: 4-5, 80.0%; 3-7, 42.9%)

Duke	FG	3FG	FT	REB	PF	TP	A	TO	B	S	Min
Odom f	4-5	0-0	0-0	0-4-4	3	8	2	0	0	1	19
Mathias f	12-18	0-0	0-0	1-2-3	1	24	1	1	2	2	32
Faz Davalos c	2-4	0-0	0-0	2-4-6	3	4	2	1	1	0	18
Brown g	9-13	2-4	0-0	2-5-7	0	20	9	5	0	8	33
Greenwell g	3-10	0-5	1-2	1-2-3	1	7	3	1	0	2	26
Gorecki	3-6	1-2	0-0	1-3-4	0	7	0	0	2	2	16
Boykin	1-4	1-3	2-2	2-1-3	1	5	3	2	0	0	19
Suggs	1-1	0-0	0-0	0-2-2	2	6	0	0	0	0	13
Williams	3-4	0-0	0-0	0-2-2	2	6	0	0	0	0	10
Schubert	0-0	0-0	0-0	0-0-0	0	0	1	0	0	0	2
Adams	0-1	0-1	0-2	0-0-0	1	0	0	0	0	1	6
Treece	1-2	0-0	0-0	0-2-2	0	2	1	0	0	0	6
TEAM				1-2-3							1
<b>Totals</b>	<b>39-68</b>	<b>4-15</b>	<b>3-6</b>	<b>10-27-37</b>	<b>13</b>	<b>85</b>	<b>24</b>	<b>10</b>	<b>3</b>	<b>17</b>	<b>200</b>
<b>Pct.</b>	<b>57.4</b>	<b>26.7</b>	<b>50.0</b>	<b>DB: 3</b>							

FG's (1Q: 11-18, 61.1%; 2Q: 10-16, 62.5%; 3Q: 8-18, 44.4%; 4Q: 10-16, 62.5%)  
 3FG's (1Q: 1-3, 33.3%; 2Q: 1-4, 25.0%; 3Q: 1-5, 20.0%; 4Q: 1-3, 33.3%)  
 FT's (1Q: 0-0, 0.0%; 2Q: 0-0, 0.0%; 3Q: 3-4, 75.0%; 4Q: 0-2, 0.0%)

Officials: Billy Smith, Talisa Green, John Capolino  
 Attendance: 3080 • Technical Fouls: None

Score by Periods	1st	2nd	3rd	4th	Total
UNCG	15	14	8	17	54
Duke	23	21	20	21	85

**Head Coach Joanne P. McCallie**

**11th Season at Duke**

**26th Year as Head Coach**

**Accomplishments (Heading into 2017-18)**

- Inducted into the Maine Basketball Hall of Fame in August of 2014.
- Named the ACC Coach of the Year in 2010, 2012 and 2013.
- Led the Blue Devils to the 2010, 2011 and 2013 ACC Championship, which gave Duke the eighth conference title in school history.
- Guided the Blue Devils to at least the share of the ACC regular season title in four straight years from 2010-13.
- Has led Duke to 273 overall wins and 121 league victories in her 10 years with the Blue Devils.
- Reached the 500-win mark in 2013, joining a group of 29 active coaches in Division I with at least 500 wins.
- Brought in back-to-back No. 1 classes in 2010 and 2011 as well as the No. 1 class in 2015, while securing the No. 2 class in 2013 and 2014.
- Had five Blue Devils taken in the first round of the WNBA Draft since arriving at Duke, while a total of 10 Duke players have been drafted over the last nine years.
- Collected 200 victories in only 240 games becoming the fourth-quickest Division I head coach to reach 200 wins at a school.
- Is the third-quickest NCAA Division I head coach to reach 150 wins at an institution doing so in only 182 games.

- Became the first Division I head coach to win a conference title in four different leagues - ACC, Big Ten, America East, North Atlantic.

- Won 82 games in her first three years at Duke, which is the second-most in NCAA Division I history by a coach in the first three years at a school.

- Is the first Division I head coach to be named conference coach of the year in four different conferences.

- Reached 100 wins at Duke in only 122 games, the second-quickest to ever reach 100 wins at a school.

- Led Duke to its 10th 30-win season out of the last 13 years in 2012-13.

- Became only the second Division I head coach to lead two different programs to 30-win seasons and lead two different programs to a No. 1 seed in the NCAA Tournament.

- Is one of only three Division I head coaches to guide three different programs to the NCAA Tournament.

- Coach P is one of only four head coaches in Division I history to lead three different programs to 25 or more wins in a single season.

- Won a gold medal as coach of the 2006 U20 National team and the 2007 U21 World Championship team.

- In 2005, led MSU to the Big Ten regular season and tournament championships and the NCAA National Championship game.



**Coach P Year-by-Year**

Year.....	Team .....	Overall Record .....	League Record ....	Postseason
		(Winning %)	(Winning %)	
1992-93	Maine	9-20 (.310)	4-10 (.286)	North Atlantic Tournament Runner-up
1993-94	Maine	20-7 (.741)	12-2 (.857)	North Atlantic Regular-Season Champion
1994-95	Maine	24-6 (.800)	14-2 (.875)	*North Atlantic Champion/NCAA Tournament
1995-96	Maine	27-5 (.844)	18-0 (1.000)	*North Atlantic Champion/NCAA Tournament
1996-97	Maine	22-8 (.733)	17-1 (.944)	*America East Champion/NCAA Tournament
1997-98	Maine	21-9 (.700)	13-5 (.722)	America East Tourn. Champ/NCAA Tournament
1998-99	Maine	24-7 (.774)	17-1 (.944)	America East Regular-Season Champion/NCAA Tournament Second Round
1999-2000	Maine	20-11 (.645)	14-4 (.778)	NCAA Tournament
2000-01	Mich. State	10-18 (.357)	4-12 (.250)	N/A
2001-02	Mich. State	19-13 (.594)	6-10 (.375)	WNIT Semifinals
2002-03	Mich. State	17-12 (.586)	10-6 (.625)	NCAA Tournament
2003-04	Mich. State	22-9 (.710)	10-6 (.625)	NCAA Tournament Second Round
2004-05	Mich. State	33-4 (.892)	13-2 (.867)	*Big Ten Champion/NCAA Tournament National Finalist
2005-06	Mich. State	24-10 (.706)	11-5 (.688)	NCAA Tournament Sweet 16
2006-07	Mich. State	24-9 (.727)	14-2 (.875)	NCAA Tournament Second Round
2007-08	Duke	25-10 (.714)	10-4 (.714)	NCAA Tournament Sweet 16
2008-09	Duke	27-6 (.818)	11-3 (.786)	NCAA Tournament Second Round
2009-10	Duke	30-6 (.833)	12-2 (.857)	*ACC Champion/NCAA Tournament Elite Eight
2010-11	Duke	32-4 (.889)	12-2 (.857)	*ACC Champion/NCAA Tournament Elite Eight
2011-12	Duke	27-6 (.818)	15-1 (.938)	ACC Regular Season Champion/NCAA Tournament Elite Eight
2012-13	Duke	33-3 (.917)	17-1 (.944)	*ACC Champion/NCAA Tournament Elite Eight
2013-14	Duke	28-7 (.800)	12-4 (.750)	NCAA Tournament Second Round
2014-15	Duke	23-11 (.677)	11-5 (.688)	NCAA Tournament Sweet 16
2015-16	Duke	20-12 (.625)	8-8 (.500)	N/A
2016-17	Duke	28-6 (.824)	13-3 (.813)	NCAA Tournament Second Round
2017-18	Duke	7-2 (1.000)		

\*Regular season and tournament

**Career Total (26 Years):** ..... 596-221 (.730) ..... 300-102 (.746) ..... 20 NCAA Tournament Appearances; Eight Conference Championships  
**Duke (11 Years):**..... 280-73 (.793) ..... 121-33 (.786) ..... Nine NCAA Tournament Appearances; Three ACC Championships  
**Michigan St. (7 Years):**..... 149-75 (.665) ..... 68-44 (.607) ..... Five NCAA Tournament Appearances; One Big Ten Championship  
**Maine (8 Years):** ..... 167-73 (.695) ..... 109-25 (.813) ..... Six NCAA Tournaments; Two America East Tournament & Two North Atlantic Champ.

**THE STAT CREW SYSTEM**  
**Duke Combined Team Statistics (as of Dec 07, 2017)**  
**All games**

<b>RECORD:</b>	<b>OVERALL</b>	<b>HOME</b>	<b>AWAY</b>	<b>NEUTRAL</b>
ALL GAMES	7-2	5-0	2-2	0-0
CONFERENCE	0-0	0-0	0-0	0-0
NON-CONFERENCE	7-2	5-0	2-2	0-0

#	Player	gp-gs	min	avg	Total		3-Point		F-Throw		Rebounds				pf	dq	a	to	blk	stl	pts	avg
					fg-fga	fg%	3fg-fga	3fg%	ft-fa	ft%	off	def	tot	avg								
04	Lexie Brown	9-9	300	33.3	59-117	.504	17-39	.436	35-39	.897	5	32	37	4.1	15	1	46	24	1	31	170	18.9
23	Rebecca Greenwell	9-9	306	34.0	49-110	.445	23-51	.451	12-17	.706	12	44	56	6.2	16	0	14	12	1	16	133	14.8
05	Leaonna Odom	9-9	262	29.1	44-78	.564	0-0	.000	7-10	.700	25	44	69	7.7	25	0	9	15	11	12	95	10.6
35	Erin Mathias	9-9	246	27.3	42-76	.553	0-0	.000	7-10	.700	22	29	51	5.7	18	1	15	17	10	8	91	10.1
02	Haley Gorecki	9-0	130	14.4	15-37	.405	7-20	.350	12-19	.632	2	19	21	2.3	5	0	14	10	0	5	49	5.4
12	Mikayla Boykin	9-8	227	25.2	12-48	.250	5-16	.313	10-14	.714	9	16	25	2.8	14	0	30	18	0	11	39	4.3
25	Jade Williams	9-0	74	8.2	11-22	.500	0-0	.000	3-12	.250	12	12	24	2.7	14	0	5	9	4	2	25	2.8
21	Bego Faz Davalos	9-1	94	10.4	8-17	.471	0-0	.000	3-9	.333	7	20	27	3.0	7	0	9	9	4	2	19	2.1
14	Faith Suggs	8-0	63	7.9	4-9	.444	1-3	.333	4-7	.571	4	3	7	0.9	5	0	4	1	0	2	13	1.6
44	Madison Treece	7-0	45	6.4	3-11	.273	0-1	.000	3-5	.600	2	3	5	0.7	7	0	1	1	1	0	9	1.3
32	Jayda Adams	9-0	47	5.2	2-8	.250	0-4	.000	0-2	.000	2	2	4	0.4	8	0	2	3	0	3	4	0.4
30	Emily Schubert	3-0	6	2.0	0-0	.000	0-0	.000	0-0	.000	0	0	0	0.0	1	0	1	0	2	0	0	0.0
Team											18	10	28				5					
Total.....		9	1800		249-533	.467	53-134	.396	96-144	.667	120	234	354	39.3	135	2	150	124	34	92	647	71.9
Opponents.....		9	1800		190-515	.369	67-234	.286	75-105	.714	94	178	272	30.2	134	-	118	141	29	57	522	58.0

<b>TEAM STATISTICS</b>	<b>DU</b>	<b>OPP</b>	<b>Date</b>	<b>Opponent</b>	<b>Score</b>	<b>Att.</b>
SCORING	647	522	11-12-17	at Grand Canyon	w 74-61	1683
Points per game	71.9	58.0	11-16-17	HIGH POINT	w 77-50	2063
Scoring margin	+13.9	-	11-19-17	at Villanova	L 55-64	1421
FIELD GOALS-ATT	249-533	190-515	11-22-17	at Old Dominion	w 84-51	1960
Field goal pct	.467	.369	11-25-17	#17/18 OREGON STATE	w 72-65	3408
3 POINT FG-ATT	53-134	67-234	11-26-17	PRESBYTERIAN	w 79-45	3266
3-point FG pct	.396	.286	11-30-17	#8/8 OHIO STATE	w 69-60	5535
3-pt FG made per game	5.9	7.4	12-03-17	at #5/6 South Carolina	L 52-72	13054
FREE THROWS-ATT	96-144	75-105	12-7-17	UNC GREENSBORO	w 85-54	3080
Free throw pct	.667	.714				
F-Throws made per game	10.7	8.3				
REBOUNDS	354	272				
Rebounds per game	39.3	30.2				
Rebounding margin	+9.1	-				
ASSISTS	150	118				
Assists per game	16.7	13.1				
TURNOVERS	124	141				
Turnovers per game	13.8	15.7				
Turnover margin	+1.9	-				
Assist/turnover ratio	1.2	0.8				
STEALS	92	57				
Steals per game	10.2	6.3				
BLOCKS	34	29				
Blocks per game	3.8	3.2				
ATTENDANCE	17352	18118				
Home games-Avg/Game	5-3470	4-4530				
Neutral site-Avg/Game	-	0-0				

\* - Conference game

<b>Score by Periods</b>	<b>1st</b>	<b>2nd</b>	<b>3rd</b>	<b>4th</b>	<b>Totals</b>
Duke	172	158	153	164	647
Opponents	128	123	150	121	522

**THE STAT CREW SYSTEM**  
**Duke Game-by-Game Highs (as of Dec 07, 2017)**  
**All games**

<b>Opponent</b>	<b>Date</b>	<b>Score</b>	<b>Points</b>	<b>Rebounds</b>	<b>Assists</b>	<b>Steals</b>	<b>Blocked shots</b>
at Grand Canyon	11-12-17	74-61	19-Rebecca Greenwel	10-Erin Mathias	7-Lexie Brown	3-Leaonna Odom	None
HIGH POINT	11-16-17	77-50	24-Lexie Brown	9-Leaonna Odom	7-Mikayla Boykin	6-Lexie Brown	2-Erin Mathias Jade Williams
at Villanova	11-19-17	55-64	16-Lexie Brown	12-Leaonna Odom	2-Mikayla Boykin Jade Williams Erin Mathias	1-Lexie Brown Mikayla Boykin Erin Mathias Rebecca Greenwell Leaonna Odom	1-Leaonna Odom
at Old Dominion	11-22-17	84-51	28-Lexie Brown	9-Rebecca Greenwell	8-Lexie Brown	3-Lexie Brown	1-Jade Williams Erin Mathias Bego Faz Davalos Madison Treece
#17/18 OREGON STATE	11-25-17	72-65	19-Lexie Brown	9-Rebecca Greenwell	5-Lexie Brown	3-Mikayla Boykin Erin Mathias Lexie Brown	None
PRESBYTERIAN	11-26-17	79-45	22-Rebecca Greenwel	10-Leaonna Odom	7-Lexie Brown	5-Lexie Brown	2-Leaonna Odom Erin Mathias
#8/8 OHIO STATE	11-30-17	69-60	19-Lexie Brown Rebecca Greenwell	13-Leaonna Odom	4-Haley Gorecki Erin Mathias	2-Leaonna Odom Rebecca Greenwell	4-Leaonna Odom
at #5/6 South Carolina	12-03-17	52-72	16-Erin Mathias	6-Erin Mathias Rebecca Greenwell	4-Lexie Brown Mikayla Boykin	3-Lexie Brown	3-Leaonna Odom
UNC GREENSBORO	12-7-17	85-54	24-Erin Mathias	7-Lexie Brown	9-Lexie Brown	8-Lexie Brown	2-Erin Mathias

**THE STAT CREW SYSTEM**  
**Duke Points-Rebounds-Assists (as of Dec 07, 2017)**  
**All games**

Opponent	Date	Score		02	04	05	12	14	21	23
				GORECKI,HA	BROWN,LEXI	ODOM,LEAON	BOYKIN,MIK	SUGGS,FAIT	DAVALOS,BE	GREENWELL,
at Grand Canyon	11-12-17	74-61	w	1-0-1	13-6-7	13-7-0	12-3-1	0-0-0	4-4-2	19-8-5
HIGH POINT	11-16-17	77-50	w	3-0-0	24-4-3	16-9-1	2-5-7	3-3-1	2-3-2	10-8-1
at Villanova	11-19-17	55-64	L	5-1-0	16-3-1	13-12-1	3-2-2	0-0-0	0-2-0	9-6-0
at Old Dominion	11-22-17	84-51	w	11-3-2	28-8-8	3-5-0	4-3-4	0-2-0	2-3-1	22-9-0
#17/18 OREGON STATE	11-25-17	72-65	w	7-2-1	19-0-5	16-8-2	6-2-4	DNP	1-4-1	17-9-1
PRESBYTERIAN	11-26-17	79-45	w	4-2-4	18-3-7	14-10-1	2-3-2	8-2-1	0-3-1	22-3-1
#8/8 OHIO STATE	11-30-17	69-60	w	11-7-4	19-5-2	6-13-1	4-2-3	0-0-0	0-1-0	19-4-1
at #5/6 South Carolina	12-03-17	52-72	L	0-2-2	13-1-4	6-1-1	1-2-4	0-0-0	6-1-0	8-6-2
UNC GREENSBORO	12-7-17	85-54	w	7-4-0	20-7-9	8-4-2	5-3-3	2-0-2	4-6-2	7-3-3

Opponent	Date	Score		25	30	32	35	44
				WILLIAMS,J	SCHUBERT,E	ADAMS,JAYD	MATHIAS,ER	TREECE,MAD
at Grand Canyon	11-12-17	74-61	w	0-2-0	DNP	0-0-0	12-10-1	0-0-0
HIGH POINT	11-16-17	77-50	w	4-5-1	0-0-0	2-1-0	11-7-0	0-0-0
at Villanova	11-19-17	55-64	L	2-7-2	DNP	2-1-0	5-6-2	DNP
at Old Dominion	11-22-17	84-51	w	5-3-1	DNP	0-0-2	7-6-1	2-1-0
#17/18 OREGON STATE	11-25-17	72-65	w	0-1-0	DNP	0-0-0	6-1-3	0-0-0
PRESBYTERIAN	11-26-17	79-45	w	6-1-1	0-0-0	0-2-0	0-2-2	5-1-0
#8/8 OHIO STATE	11-30-17	69-60	w	0-1-0	DNP	0-0-0	10-10-4	DNP
at #5/6 South Carolina	12-03-17	52-72	L	2-2-0	DNP	0-0-0	16-6-1	0-1-0
UNC GREENSBORO	12-7-17	85-54	w	6-2-0	0-0-1	0-0-0	24-3-1	2-2-1

**THE STAT CREW SYSTEM**  
**Duke Team Game-by-Game (as of Dec 07, 2017)**  
**All games**

**TEAM STATISTICS**

Opponent	Date	Score		Total		3-Pointers		Free throws		Rebounds				pf	a	t/o	blk	stl	pts	avg
				fg-fga	pct	3fg-fga	pct	ft-fa	pct	off	def	tot	avg							
at Grand Canyon	11-12-17	74-61	W	27-61	.443	7-14	.500	13-18	.722	16	26	42	42.0	16	17	16	0	11	74	74.0
HIGH POINT	11-16-17	77-50	W	28-56	.500	1-9	.111	20-28	.714	18	28	46	44.0	18	16	19	7	16	77	75.5
at Villanova	11-19-17	55-64	L	21-56	.375	2-12	.167	11-16	.688	18	26	44	44.0	21	8	15	1	5	55	68.7
at Old Dominion	11-22-17	84-51	W	28-64	.438	13-20	.650	15-24	.625	16	32	48	45.0	14	19	9	4	7	84	72.5
#17/18 OREGON STATE	11-25-17	72-65	W	27-59	.458	9-19	.474	9-13	.692	7	21	28	41.6	11	17	9	0	11	72	72.4
PRESBYTERIAN	11-26-17	79-45	W	31-54	.574	8-18	.444	9-15	.600	12	22	34	40.3	10	20	12	7	10	79	73.5
#8/8 OHIO STATE	11-30-17	69-60	W	26-57	.456	8-17	.471	9-14	.643	13	36	49	41.6	14	15	21	6	6	69	72.9
at #5/6 South Carolina	12-03-17	52-72	L	22-58	.379	1-10	.100	7-10	.700	10	16	26	39.6	18	14	13	6	9	52	70.2
UNC GREENSBORO	12-7-17	85-54	W	39-68	.574	4-15	.267	3-6	.500	10	27	37	39.3	13	24	10	3	17	85	71.9
Duke		647		249-533	.467	53-134	.396	96-144	.667	120	234	354	39.3	135	150	124	34	92	647	71.9
Opponents		522		190-515	.369	67-234	.286	75-105	.714	94	178	272	30.2	134	118	141	29	57	522	58.0

Games played: 9  
Points/game: 71.9  
FG Pct: 46.7  
3FG Pct: 39.6  
FT Pct: 66.7

Rebounds/game: 39.3  
Assists/game: 16.7  
Turnovers/game: 13.8  
Assist/turnover ratio: 1.2  
Steals/game: 10.2  
Blocks/game: 3.8

**THE STAT CREW SYSTEM**  
**Duke Team Game-by-Game Comparison (as of Dec 07, 2017)**  
**All games**

Opponent	1st	2nd	Score	Mar	Total FG	FG Pct	3-Pointers	3FG Pct	Free Throws	FT Pct	Rebounds	Assist	T/Over	Block	Steal	Fouls
Grand Canyon	40/31	34/30	74-61	+13	27-61/23-53	.443/.434	7-14/8-26	.500/.308	13-18/7-8	.722/.875	42/24 +18	17/18	16/15	0/1	11/2	16/16
HIGH POINT	39/28	38/22	77-50	+27	28-56/16-53	.500/.302	1-9/6-22	.111/.273	20-28/12-19	.714/.632	46/26 +20	16/9	19/22	7/2	16/11	18/27
Villanova	28/22	27/42	55-64	(9)	21-56/20-55	.375/.364	2-12/15-40	.167/.375	11-16/9-11	.688/.818	44/26 +18	8/15	15/8	1/6	5/8	21/15
Old Dominion	38/18	46/33	84-51	+33	28-64/17-60	.438/.283	13-20/7-30	.650/.233	15-24/10-14	.625/.714	48/36 +12	19/12	9/13	4/3	7/2	14/17
#17/18 OREGON STATE	35/26	37/39	72-65	+7	27-59/24-54	.458/.444	9-19/9-25	.474/.360	9-13/8-8	.692/1000	28/34 (6)	17/16	9/18	0/5	11/3	11/18
PRESBYTERIAN	36/28	43/17	79-45	+34	31-54/18-51	.574/.353	8-18/6-24	.444/.250	9-15/3-4	.600/.750	34/26 +8	20/11	12/21	7/0	10/5	10/10
#8/8 OHIO STATE	43/31	26/29	69-60	+9	26-57/23-71	.456/.324	8-17/10-36	.471/.278	9-14/4-6	.643/.667	49/30 +19	15/12	21/10	6/8	6/12	14/17
#5/6 South Carolina	27/38	25/34	52-72	(20)	22-58/32-63	.379/.508	1-10/1-8	.100/.125	7-10/7-15	.700/.467	26/40 (14)	14/16	13/12	6/3	9/7	18/9
UNC GREENSBORO	44/29	41/25	85-54	+31	39-68/17-55	.574/.309	4-15/5-23	.267/.217	3-6/15-20	.500/.750	37/30 +7	24/9	10/22	3/1	17/7	13/5

Note: Game totals are displayed in the format TEAM/OPPONENT for each category

**THE STAT CREW SYSTEM**  
**Duke Season Schedule/Results & Leaders (as of Dec 07, 2017)**  
**All games**

<b>RECORD:</b>	<b>OVERALL</b>	<b>HOME</b>	<b>AWAY</b>	<b>NEUTRAL</b>
ALL GAMES	7-2	5-0	2-2	0-0
CONFERENCE	0-0	0-0	0-0	0-0
NON-CONFERENCE	7-2	5-0	2-2	0-0

<b>Date</b>	<b>Opponent</b>	<b>Score</b>	<b>Att.</b>	<b>High Points</b>	<b>High Rebounds</b>
11-12-17	at Grand Canyon	W 74-61	1683	(19)Rebecca Greenwell	(10)Erin Mathias
11-16-17	HIGH POINT	W 77-50	3121	(24)Lexie Brown	(9)Leaonna Odom
11-19-17	at Villanova	55-64 L	1421	(16)Lexie Brown	(12)Leaonna Odom
11-22-17	at Old Dominion	W 84-51	1960	(28)Lexie Brown	(9)Rebecca Greenwell
11-25-17	#17/18 OREGON STATE	W 72-65	3408	(19)Lexie Brown	(9)Rebecca Greenwell
11-26-17	PRESBYTERIAN	W 79-45	3266	(22)Rebecca Greenwell	(10)Leaonna Odom
11-30-17	#8/8 OHIO STATE	W 69-60	5535	(19)Rebecca Greenwell	(13)Leaonna Odom
				(19)Lexie Brown	
12-03-17	at #5/6 South Carolina	52-72 L	13054	(16)Erin Mathias	(6)Rebecca Greenwell
					(6)Erin Mathias
12-7-17	UNC GREENSBORO	W 85-54	3080	(24)Erin Mathias	(7)Lexie Brown

\* - Conference game

<b>Attendance Summary</b>	<b>Games</b>	<b>Attend</b>	<b>Avg/Game</b>
Home	5	18410	3682
Away	4	18118	4530
Neutral	0	0	0
Total	9	36528	4059



**HALEY GORECKI**  
 #2 • G • 6-0 • RSO.  
 Palatine, Ill.  
 William Fremd

# #2 HALEY GORECKI

**NOTES:**

Missed the last year and a half recovering from hip surgery ... tied career-high (11 points) at Old Dominion (11.22.17) ... registered a career-high in minutes (26) and in rebounds (7) against Ohio State (11.30.17) ...

**2017-18 HONORS:**

**CAREER HIGHS**

PTS	11	3x, last vs. Ohio State (11.30.17)
REB	7	vs. Ohio State (11.30.17)
AST	5	vs. Iowa State (11.27.15)
FG	4	vs. Texas State (11.28.15)
FGA	8	2x, last vs. Ohio State (11.30.17)
FG%	1.000 (4-4)	vs. Texas State (11.28.15)
3FG	3	3x, last at Old Dominion (11.22.17)
3FGA	6	2x, last vs. Ohio State (11.30.17)
FT	5	vs. Western Carolina (12.29.15)
FTA	6	vs. Ohio State (11.30.17)
FT%	1.000 (5-5)	vs. Western Carolina (12.29.15)
BLK	1	vs. Western Carolina (12.29.15)
STL	3	2x, last vs. Winthrop (11.15.15)
MIN	26	vs. Ohio State (11.30.17)

**SEASON HIGHS**

PTS	11	2x, last vs. Ohio State (11.30.17)
REB	7	vs. Ohio State (11.30.17)
AST	4	vs. Presbyterian (11.26.17)
FG	3	2x, last vs. Ohio State (11.30.17)
FGA	8	2x, last vs. Ohio State (11.30.17)
FG%	.667 (2-3)	at Villanova (11.19.17)
3FG	3	2x, last vs. Ohio State (11.30.17)
3FGA	6	vs. Ohio State (11.30.17)
FT	3	2x, last vs. Ohio State (11.30.17)
FTA	6	vs. Ohio State (11.30.17)
FT%	1.000 (2-2)	at Old Dominion (11.22.17)
BLK		
STL	2	3x, last vs. UNCG (12.7.17)
MIN	26	vs. Ohio State (11.30.17)

MISC.	SEASON	CAREER
10+ PTS	2	3
20+ PTS		0
5+ REB	1	3
10+ REB		0
3+ AST	2	3
3+ STL		2
20+ MIN	1	3
Double-Double		0
Triple-Double		0
Led Duke in scoring		0
Led Duke in rebounding		0
Charges taken		1

**2017-18 GAME-BY-GAME**

DATE	OPPONENT	MIN	FG	3FG	FT	O-D-R	A	T	B	S	TP
11.12	at Grand Canyon	7	0-1	0-0	1-2	0-0-0	1	0	0	1	1
11.16	High Point	6	0-1	0-1	3-4	0-0-0	0	2	0	2	3
11.19	at Villanova	16	2-3	0-1	1-1	0-1-1	0	0	0	0	5
11.22	at Old Dominion	13	3-8	3-5	2-2	0-3-3	2	0	0	0	11
11.25	Oregon State	17	3-6	1-3	0-0	0-2-2	1	0	0	0	7
11.26	Presbyterian	16	1-2	0-1	2-4	1-1-2	4	1	0	0	4
11.30	Ohio State	26	3-8	2-6	3-6	0-7-7	4	3	0	0	11
12.3	at South Carolina	13	0-2	0-1	0-0	0-2-2	2	4	0	0	0
12.7	UNCG	16	3-6	1-2	0-0	1-3-4	0	0	0	2	7
12.10	Winthrop										
12.19	Maine										
12.21	Wyoming										
12.31	at Miami										
1.4	at Louisville										
1.7	NC State										
1.11	at Wake Forest										
1.14	Virginia										
1.18	at Virginia Tech										
1.21	at North Carolina										
1.25	Boston College										
1.28	at Pitt										
2.1	Georgia Tech										
2.4	Notre Dame										
2.7	Wake Forest										
2.11	at Clemson										
2.15	at Syracuse										
2.19	Florida State										
2.25	North Carolina										

\* Denotes Started Game; ^ Denotes ACC Tournament; # Denotes NCAA Tournament

**GOECKI CAREER STATISTICS**

YEAR	GP	GS	MIN	AVG	FG	FGA	PCT	3FG	3FGA	PCT	FT	FTA	PCT	OFF	DEF	REB	AVG	PF	FO	AST	TO	BLK	STL	PTS	AVG
2015-16	14	1	227	16.2	20	72	.278	8	36	.222	15	17	.882	12	25	37	2.6	9	0	15	25	1	16	63	4.5
2016-17	0	0	0	0.0	0	0	.000	0	0	.000	0	0	.000	0	0	0	0.0	0	0	0	0	0	0	0	0.0
2017-18	9	0	130	14.4	15	37	.405	7	20	.350	12	19	.632	2	19	21	2.3	5	0	14	10	0	5	49	5.4
<b>TOTAL</b>	<b>23</b>	<b>1</b>	<b>357</b>	<b>15.5</b>	<b>35</b>	<b>109</b>	<b>.321</b>	<b>15</b>	<b>56</b>	<b>.268</b>	<b>27</b>	<b>36</b>	<b>.750</b>	<b>14</b>	<b>44</b>	<b>58</b>	<b>2.5</b>	<b>14</b>	<b>0</b>	<b>29</b>	<b>35</b>	<b>1</b>	<b>21</b>	<b>112</b>	<b>4.9</b>



**LEXIE BROWN**

#4 • G • 5-9 • RSR.  
Suwanee, Ga.  
North Gwinnett/Maryland

# #4 LEXIE BROWN

**NOTES:**

Has led Duke in scoring in five of nine games so far this season.  
Posted a career-high free-throws (11-of-11) against High Point

**2017-18 Honors:**

Preseason All-America  
Preseason ACC Player of the Year (Blue Ribbon Panel)  
Preseason All-ACC Team  
Nancy Lieberman Award Watch List  
Team Captain  
John R. Wooden Award Candidate

**CAREER HIGHS**

PTS	32	vs. Old Dominion (11.22.16)
REB	11	vs. Syracuse (2.10.17)
AST	12	at Pepperdine (11.27.16)
FG	12	at Liberty (11.11.16)
FGA	19	at Notre Dame (1.26.17)
FG%	1.000 (3-3)	vs. Pittsburgh (2.6.14)
3FG	7	at Syracuse (2.2.14)
3FGA	11	2x, last vs. Princeton (3.23.15)
FT	11	vs. High Point (11.16.17)
FTA	11	vs. High Point (11.16.17)
FT%	1.000 (11-11)	vs. High Point (11.16.17)
BLK	1	9x, last vs. Presbyterian (11.26.17)
STL	8	2x, last vs. UNCG (12.7.17)
MIN	40	4x, last at Notre Dame (1.26.17)

**SEASON HIGHS**

PTS	28	at Old Dominion (11.22.17)
REB	8	at Old Dominion (11.22.17)
AST	9	vs. UNCG (12.7.17)
FG	10	at Old Dominion (11.22.17)
FGA	15	at Old Dominion (11.22.17)
FG%	.667 (10-15)	at Old Dominion (11.22.17)
3FG	4	at Old Dominion (11.22.17)
3FGA	6	at Old Dominion (11.22.17)
FT	11	vs. High Point (11.16.17)
FTA	11	vs. High Point (11.16.17)
FT%	1.000 (11-11)	vs. High Point (11.16.17)
BLK	1	vs. Presbyterian (11.26.17)
STL	8	vs. UNCG (12.7.17)
MIN	36	at Grand Canyon (11.12.17)

MISC.	SEASON	CAREER
10+ PTS	9	80
20+ PTS	3	29
5+ REB	4	29
10+ REB		1
3+ AST	7	84
3+ STL	6	40
20+ MIN	9	106
Double-Double		1
Triple-Double		0
Led Duke in scoring	5	25
Led Duke in rebounding	1	3
Charges taken	2	7

**2017-18 GAME-BY-GAME**

DATE	OPPONENT	MIN	FG	3FG	FT	O-D-R	A	T	B	S	TP
11.12	at Grand Canyon*	36	4-12	0-3	5-6	0-6-6	7	4	0	1	13
11.16	High Point**	33	6-11	1-2	11-11	1-3-4	3	6	0	5	24
11.19	at Villanova*	29	6-13	1-5	3-3	0-3-3	1	2	0	1	16
11.22	at Old Dominion*	33	10-15	4-6	4-4	2-6-8	8	2	0	3	28
11.25	Oregon State*	35	5-14	2-4	7-9	0-0-0	5	2	0	3	19
11.26	Presbyterian*	32	7-11	2-4	2-2	0-3-3	7	0	1	5	18
11.30	Ohio State*	35	7-14	4-7	1-2	0-5-5	2	3	0	1	19
12.3	at South Carolina*	34	5-14	1-4	2-2	0-1-1	4	0	0	3	13
12.7	UNCG*	33	9-13	2-4	0-0	2-5-7	9	5	0	8	20
12.10	Winthrop										
12.19	Maine										
12.21	Wyoming										
12.31	at Miami										
1.4	at Louisville										
1.7	NC State										
1.11	at Wake Forest										
1.14	Virginia										
1.18	at Virginia Tech										
1.21	at North Carolina										
1.25	Boston College										
1.28	at Pitt										
2.1	Georgia Tech										
2.4	Notre Dame										
2.7	Wake Forest										
2.11	at Clemson										
2.15	at Syracuse										
2.19	Florida State										
2.25	North Carolina										

\* Denotes Started Game; ^ Denotes ACC Tournament; # Denotes NCAA Tournament

**BROWN CAREER STATISTICS**

YEAR	GP	GS	MIN	AVG	FG	FGA	PCT	3FG	3FGA	PCT	FT	FTA	PCT	OFF	DEF	REB	AVG	PF	FO	AST	TO	BLK	STL	PTS	AVG
2013-14*	34	30	931	27.4	123	228	.427	51	139	.367	48	62	.774	12	54	66	1.9	62	0	147	78	7	47	345	10.1
2014-15*	36	36	1143	31.8	159	384	.414	69	200	.345	93	112	.830	104	14	118	3.3	53	0	163	97	0	80	480	13.3
2016-17	34	34	1153	33.9	210	430	.488	73	183	.399	129	139	.928	12	114	126	3.7	51	0	131	92	1	96	622	18.3
2017-18	9	9	300	33.3	59	117	.504	17	39	.436	35	39	.897	5	32	37	4.1	15	1	46	24	1	31	170	18.9
<b>TOTAL</b>	<b>113</b>	<b>109</b>	<b>3527</b>	<b>31.6</b>	<b>551</b>	<b>1159</b>	<b>.458</b>	<b>210</b>	<b>561</b>	<b>.387</b>	<b>308</b>	<b>352</b>	<b>.857</b>	<b>133</b>	<b>214</b>	<b>347</b>	<b>3.3</b>	<b>181</b>	<b>1</b>	<b>487</b>	<b>291</b>	<b>9</b>	<b>254</b>	<b>1617</b>	<b>15.2</b>

\* at Maryland



**LEONNA ODOM**  
 #5 • F • 6-2 • SO.  
 Lompoc, Calif.  
 Chaminade

# #5 LEONNA ODOM

**NOTES:**

Totaled her first double-double of the season and second of her career at Villanova (13 points, 12 boards) ... added her second against Presbyterian (14/10) ... one of the top shooters in the nation hitting 56.4 percent from the field

**2017-18 HONORS:**

Katrina McClain Award Watch List

**CAREER HIGHS**

PTS	23	vs. Hampton (3.18.17)
REB	13	vs. Ohio State (11.30.17)
AST	2	3x, last vs. Oregon State (11.25.17)
FG	8	vs. Hampton (3.18.17)
FGA	13	at Pepperdine (11.27.16)
FG%	1.000 (5-5)	vs. Miami (3.4.17)
3FG		
3FGA	1	2x, last vs. South Carolina (12.4.16)
FT	7	vs. Hampton (3.18.17)
FTA	8	vs. Hampton (3.18.17)
FT%	1.000 (3-3)	vs. Miami (2.19.17)
BLK	4	2x, last vs. Ohio State (11.30.17)
STL	5	2x, last vs. South Carolina (12.4.16)
MIN	38	at Villanova (11.19.17)

**SEASON HIGHS**

PTS	16	2x, last vs. Oregon State (11.25.17)
REB	13	vs. Ohio State (11.30.17)
AST	2	vs. Oregon State (11.25.17)
FG	8	vs. High Point (11.16.17)
FGA	11	at South Carolina (12.3.17)
FG%	.800 (8-10)	vs. High Point (11.16.17)
3FG		
3FGA		
FT	3	at Grand Canyon (11.12.17)
FTA	4	at Villanova (11.19.17)
FT%	1.000 (3-3)	at Grand Canyon (11.12.17)
BLK	4	vs. Ohio State (11.30.17)
STL	3	at Grand Canyon (11.12.17)
MIN	38	at Villanova (11.19.17)

MISC.	SEASON	CAREER
10+ PTS	3	13
20+ PTS		1
5+ REB	6	21
10+ REB	3	5
3+ AST		0
3+ BLK	2	4
20+ MIN	5	29
Double-Double	2	3
Triple-Double		0
Led Duke in scoring		1
Led Duke in rebounding	5	14
Charges taken		3

**2017-18 GAME-BY-GAME**

DATE	OPPONENT	MIN	FG	3FG	FT	O-D-R	A	T	B	S	TP
11.12	at Grand Canyon*	27	5-8	0-0	3-3	3-4-7	0	4	0	3	13
11.16	High Point*	25	8-10	0-0	0-1	4-5-9	1	2	1	1	16
11.19	at Villanova*	38	5-10	0-0	3-4	7-5-12	1	4	1	1	13
11.22	at Old Dominion*	16	1-5	0-0	1-2	3-2-5	0	2	0	1	3
11.25	Oregon State*	38	8-11	0-0	0-0	2-6-8	2	0	0	1	16
11.26	Presbyterian*	31	7-10	0-0	0-0	4-6-10	1	0	2	0	14
11.30	Ohio State*	35	3-8	0-0	0-0	2-11-13	1	1	4	2	6
12.3	at South Carolina*	34	3-11	0-0	0-0	0-1-1	1	2	3	2	6
12.7	UNCG*	19	4-5	0-0	0-0	0-4-4	2	0	0	1	8
12.10	Winthrop										
12.19	Maine										
12.21	Wyoming										
12.31	at Miami										
1.4	at Louisville										
1.7	NC State										
1.11	at Wake Forest										
1.14	Virginia										
1.18	at Virginia Tech										
1.21	at North Carolina										
1.25	Boston College										
1.28	at Pitt										
2.1	Georgia Tech										
2.4	Notre Dame										
2.7	Wake Forest										
2.11	at Clemson										
2.15	at Syracuse										
2.19	Florida State										
2.25	North Carolina										

\* Denotes Started Game; ^ Denotes ACC Tournament; # Denotes NCAA Tournament

**ODOM CAREER STATISTICS**

YEAR	GP	GS	MIN	AVG	FG	FGA	PCT	3FG	3FGA	PCT	FT	FTA	PCT	OFF	DEF	REB	AVG	PF	FO	AST	TO	BLK	STL	PTS	AVG
2016-17	34	17	784	23.1	115	212	.542	0	2	.000	46	72	.639	75	81	156	4.6	82	0	24	49	32	39	276	8.1
2017-18	9	9	262	29.1	44	78	.564	0	0	.000	7	10	.700	25	44	69	7.7	25	0	9	15	11	12	95	10.6
<b>TOTAL</b>	<b>43</b>	<b>26</b>	<b>1046</b>	<b>24.3</b>	<b>159</b>	<b>290</b>	<b>.548</b>	<b>0</b>	<b>2</b>	<b>.000</b>	<b>53</b>	<b>82</b>	<b>.646</b>	<b>100</b>	<b>125</b>	<b>225</b>	<b>5.2</b>	<b>107</b>	<b>0</b>	<b>33</b>	<b>64</b>	<b>43</b>	<b>51</b>	<b>371</b>	<b>8.6</b>



**SOFIA ROMA**  
 #11 • C • 6-2 • R/JR.  
 Richmond Hill, N.Y.  
 Wagner College

# #11 SOFIA ROMA

**NOTES:**

Sat out the 2016-17 season after transferring from Wagner ... recovering from a knee injury.

**2017-18 HONORS:**

**CAREER HIGHS**

PTS	13	at Mount St. Mary's (1.31.15)
REB	22	at Mount St. Mary's (1.31.15)
AST	2	5x, last vs. LIU Brooklyn (1.18.16)
FG	5	vs. Central Conn. (1.31.15)
FGA	9	2x, last at Fairleigh Dickinson (2.22.16)
FG%	1.000 (2-2)	vs. Columbia (12.30.14)
3FG		
3FGA		
FT	7	vs. Central Conn. (1.21.16)
FTA	10	vs. Central Conn. (1.21.16)
FT%	1.000 (4-4)	vs. St. Francis Brooklyn (1.26.15)
BLK	8	at Robert Morris (1.4.16)
STL	3	vs. St. Francis Brooklyn (2.15.16)
MIN	25	vs. Virginia Tech (1.15.15)

**SEASON HIGHS**

PTS	
REB	
AST	
FG	
FGA	
FG%	
3FG	
3FGA	
FT	
FTA	
FT%	
BLK	
STL	
MIN	

MISC.	SEASON	CAREER
10+ PTS		7
20+ PTS		0
5+ REB		40
10+ REB		18
3+ AST		0
3+ BLK		13
20+ MIN		31
Double-Double		6
Triple-Double		0
Led Duke in scoring		0
Led Duke in rebounding		0
Charges taken		0

**2017-18 GAME-BY-GAME**

DATE	OPPONENT	MIN	FG	3FG	FT	O-D-R	A	T	B	S	TP
11.12	at Grand Canyon	-	-	-	-	-	-	-	-	-	-
11.16	High Point	-	-	-	-	-	-	-	-	-	-
11.19	at Villanova	-	-	-	-	-	-	-	-	-	-
11.22	at Old Dominion	-	-	-	-	-	-	-	-	-	-
11.25	Oregon State	-	-	-	-	-	-	-	-	-	-
11.26	Presbyterian	-	-	-	-	-	-	-	-	-	-
11.30	Ohio State	-	-	-	-	-	-	-	-	-	-
12.3	at South Carolina	-	-	-	-	-	-	-	-	-	-
12.7	UNCG	-	-	-	-	-	-	-	-	-	-
12.10	Winthrop										
12.19	Maine										
12.21	Wyoming										
12.31	at Miami										
1.4	at Louisville										
1.7	NC State										
1.11	at Wake Forest										
1.14	Virginia										
1.18	at Virginia Tech										
1.21	at North Carolina										
1.25	Boston College										
1.28	at Pitt										
2.1	Georgia Tech										
2.4	Notre Dame										
2.7	Wake Forest										
2.11	at Clemson										
2.15	at Syracuse										
2.19	Florida State										
2.25	North Carolina										

\* Denotes Started Game; ^ Denotes ACC Tournament; # Denotes NCAA Tournament

**ROMA CAREER STATISTICS**

YEAR	GP	GS	MIN	AVG	FG	FGA	PCT	3FG	3FGA	PCT	FT	FTA	PCT	OFF	DEF	REB	AVG	PF	FO	AST	TO	BLK	STL	PTS	AVG
2014-15*	27	1	443	13.8	32	80	.400	0	0	.000	25	55	.455	62	99	161	5.8	66	0	2	43	29	15	89	3.2
2015-16*	27	26	791	28.3	54	142	.380	0	0	.000	51	81	.630	96	185	281	10.0	87	3	18	47	59	15	159	5.7
2016-17	0	0	0	0.0	0	0	.000	0	0	.000	0	0	.000	0	0	0	0.0	0	0	0	0	0	0	0	0.0
2017-18	-	-	-	-	-	-	-	-	-	-	-	-	-	-	-	-	-	-	-	-	-	-	-	-	-
<b>TOTAL</b>	<b>54</b>	<b>27</b>	<b>1234</b>	<b>21.1</b>	<b>86</b>	<b>222</b>	<b>.387</b>	<b>0</b>	<b>0</b>	<b>.000</b>	<b>76</b>	<b>136</b>	<b>.559</b>	<b>158</b>	<b>284</b>	<b>442</b>	<b>7.9</b>	<b>153</b>	<b>3</b>	<b>20</b>	<b>90</b>	<b>88</b>	<b>30</b>	<b>248</b>	<b>4.5</b>

\* at Wagner College



# #12 MIKAYLA BOYKIN

**NOTES:**

Became just the eighth Duke freshman under Coach P to start their first collegiate game.

**2017-18 HONORS:**

Preseason ACC Newcomer Watch List

**MIKAYLA BOYKIN**  
 #12 • G • 5-9 • FR.  
 Clinton, N.C.  
 Clinton

**SEASON/CAREER HIGHS**

PTS	12	at Grand Canyon (11.12.17)
REB	5	vs. High Point (11.16.17)
AST	7	vs. High Point (11.16.17)
FG	5	at Grand Canyon (11.12.17)
FGA	13	at Grand Canyon (11.12.17)
FG%	1.000 (1-1)	vs. Ohio State (11.30.17)
3FG	2	2x, last vs. Oregon State (11.25.17)
3FGA	4	at Grand Canyon (11.12.17)
FT	2	vs. High Point (11.16.17)
FTA	4	vs. High Point (11.16.17)
FT%	1.000 (2-2)	2x, last vs. Ohio State (11.30.17)
BLK		
STL	3	2x, last vs. Oregon State (11.25.17)
MIN	32	at Grand Canyon (11.12.17)

MISC.	SEASON/CAREER
10+ PTS	1 at Grand Canyon (11.12.17)
20+ PTS	
5+ REB	1 vs. High Point (11.16.17)
10+ REB	
3+ AST	4 last vs. South Carolina (12.3.17)
3+ STL	2 last vs. Oregon State (11.25.17)
20+ MIN	5 last vs. Ohio State (11.30.17)
Double-Double	
Triple-Double	
Led Duke in scoring	
Led Duke in rebounding	
Charges taken	2 last vs. UNCG (12.7.17)

**2017-18 GAME-BY-GAME**

DATE	OPPONENT	MIN	FG	3FG	FT	O-D-R	A	T	B	S	TP
11.12	at Grand Canyon*	32	5-13	2-4	0-0	1-2-3	1	1	0	1	12
11.16	High Point*	29	0-1	0-1	2-4	1-4-5	7	4	0	3	2
11.19	at Villanova*	29	1-7	0-1	1-2	2-0-2	2	4	0	1	3
11.22	at Old Dominion*	31	1-10	0-1	2-2	1-2-3	4	0	0	1	4
11.25	Oregon State*	31	2-4	2-3	0-0	0-2-2	4	2	0	3	6
11.26	Presbyterian*	17	1-4	0-1	0-0	1-2-3	2	1	0	0	2
11.30	Ohio State*	22	1-1	0-0	2-2	1-1-2	3	2	0	1	4
12.3	at South Carolina*	17	0-4	0-2	1-2	0-2-2	4	2	0	0	1
12.7	UNCG	19	1-4	1-3	2-2	2-1-3	3	2	0	1	5
12.10	Winthrop										
12.19	Maine										
12.21	Wyoming										
12.31	at Miami										
1.4	at Louisville										
1.7	NC State										
1.11	at Wake Forest										
1.14	Virginia										
1.18	at Virginia Tech										
1.21	at North Carolina										
1.25	Boston College										
1.28	at Pitt										
2.1	Georgia Tech										
2.4	Notre Dame										
2.7	Wake Forest										
2.11	at Clemson										
2.15	at Syracuse										
2.19	Florida State										
2.25	North Carolina										

\* Denotes Started Game; ^ Denotes ACC Tournament; # Denotes NCAA Tournament

**BOYKIN CAREER STATISTICS**

YEAR	GP	GS	MIN	AVG	FG	FGA	PCT	3FG	3FGA	PCT	FT	FTA	PCT	OFF	DEF	REB	AVG	PF	FO	AST	TO	BLK	STL	PTS	AVG
2017-18	9	8	227	25.2	12	48	.250	5	16	.313	10	14	.714	9	16	25	2.8	14	0	30	18	0	11	39	4.3
<b>TOTAL</b>	<b>9</b>	<b>8</b>	<b>227</b>	<b>25.2</b>	<b>12</b>	<b>48</b>	<b>.250</b>	<b>5</b>	<b>16</b>	<b>.313</b>	<b>10</b>	<b>14</b>	<b>.714</b>	<b>9</b>	<b>16</b>	<b>25</b>	<b>2.8</b>	<b>14</b>	<b>0</b>	<b>30</b>	<b>18</b>	<b>0</b>	<b>11</b>	<b>39</b>	<b>4.3</b>



# #14 FAITH SUGGS

**NOTES:**  
Tied career-high in points (8) against Presbyterian (11.26.17)

**2017-18 HONORS:**

**FAITH SUGGS**  
#14 • G/F • 6-1 • JR.  
Flossmoor, Ill.  
Homewood Flossmoor

### CAREER HIGHS

PTS	8	3x, last vs. Presbyterian (11.26.17)
REB	8	at Wake Forest (2.14.16)
AST	1	18x, last vs. Presbyterian (11.26.17)
FG	3	4x, last vs. Presbyterian (11.26.17)
FGA	6	2x, last vs. Longwood (11.15.16)
FG%	1.000 (3-3)	vs. Presbyterian (11.26.17)
3FG	2	2x, last vs. Notre Dame (3.4.16)
3FGA	3	5x, last vs. Pittsburgh (2.12.17)
FT	3	2x, last vs. High Point (11.16.17)
FTA	6	2x, last vs. High Point (11.16.17)
FT%	1.000 (2-2)	vs. Pittsburgh (2.12.17)
BLK		
STL	4	at Liberty (11.11.16)
MIN	18	4x, last vs. Presbyterian (11.26.17)

### SEASON HIGHS

PTS	8	vs. Presbyterian (11.26.17)
REB	3	vs. High Point (11.16.17)
AST	1	2x, last vs. Presbyterian (11.26.17)
FG	3	vs. Presbyterian (11.26.17)
FGA	3	vs. Presbyterian (11.26.17)
FG%	1.000 (3-3)	vs. Presbyterian (11.26.17)
3FG	1	vs. Presbyterian (11.26.17)
3FGA	1	2x, last vs. Presbyterian (11.26.17)
FT	3	vs. High Point (11.16.17)
FTA	6	vs. High Point (11.16.17)
FT%	1.000 (1-1)	vs. Presbyterian (11.26.17)
BLK		
STL	1	2x, last vs. Presbyterian (11.26.17)
MIN	18	vs. Presbyterian (11.26.17)

MISC.	SEASON	CAREER
10+ PTS		0
20+ PTS		0
5+ REB		2
10+ REB		0
3+ AST		0
3+ STL		1
20+ MIN		1
Double-Double		0
Triple-Double		0
Led Duke in scoring		0
Led Duke in rebounding		1
Charges taken		2

### 2017-18 GAME-BY-GAME

DATE	OPPONENT	MIN	FG	3FG	FT	O-D-R	A	T	B	S	TP
11.12	at Grand Canyon	4	0-1	0-1	0-0	0-0-0	0	0	0	1	0
11.16	High Point	11	0-2	0-1	3-6	3-0-3	1	0	0	0	3
11.19	at Villanova	3	0-1	0-0	0-0	0-0-0	0	0	0	0	0
11.22	at Old Dominion	6	0-1	0-0	0-0	1-1-2	0	0	0	0	0
11.25	Oregon State	-	-	-	-	-	-	-	-	-	-
11.26	Presbyterian	18	3-3	1-1	1-1	0-2-2	1	1	0	1	8
11.30	Ohio State	1	0-0	0-0	0-0	0-0-0	0	0	0	0	0
12.3	at South Carolina	7	0-0	0-0	0-0	0-0-0	0	0	0	0	0
12.7	UNCG	13	1-1	0-0	0-0	0-0-0	2	0	0	0	2
12.10	Winthrop										
12.19	Maine										
12.21	Wyoming										
12.31	at Miami										
1.4	at Louisville										
1.7	NC State										
1.11	at Wake Forest										
1.14	Virginia										
1.18	at Virginia Tech										
1.21	at North Carolina										
1.25	Boston College										
1.28	at Pitt										
2.1	Georgia Tech										
2.4	Notre Dame										
2.7	Wake Forest										
2.11	at Clemson										
2.15	at Syracuse										
2.19	Florida State										
2.25	North Carolina										

\* Denotes Started Game; ^ Denotes ACC Tournament; # Denotes NCAA Tournament

### SUGGS CAREER STATISTICS

YEAR	GP	GS	MIN	AVG	FG	FGA	PCT	3FG	3FGA	PCT	FT	FTA	PCT	OFF	DEF	REB	AVG	PF	FO	AST	TO	BLK	STL	PTS	AVG
2015-16	29	1	257	8.9	19	56	.339	8	25	.320	12	23	.522	16	30	46	1.6	33	0	8	20	0	9	58	2.0
2016-17	32	0	194	6.1	16	47	.340	2	21	.095	2	4	.500	8	17	25	0.8	16	0	8	8	0	13	36	1.1
2017-18	8	0	63	7.9	4	9	.444	1	3	.333	4	7	.571	4	3	7	0.9	5	0	4	1	0	2	13	1.6
<b>TOTAL</b>	<b>69</b>	<b>1</b>	<b>514</b>	<b>7.4</b>	<b>39</b>	<b>112</b>	<b>.348</b>	<b>11</b>	<b>49</b>	<b>.224</b>	<b>18</b>	<b>34</b>	<b>.529</b>	<b>28</b>	<b>50</b>	<b>78</b>	<b>1.1</b>	<b>54</b>	<b>0</b>	<b>20</b>	<b>29</b>	<b>0</b>	<b>24</b>	<b>107</b>	<b>1.6</b>



**KYRA LAMBERT**  
 #15 • G • 5-9 • JR.  
 Cibolo, Texas  
 Samuel Clemens

# #15 KYRA LAMBERT

**NOTES:**

Recovering from a torn ACL suffered in the 2017 NCAA Tournament  
 Will miss the 2017-18 season

**2017-18 HONORS:**

Team Captain

**CAREER HIGHS**

PTS	17	vs. Grand Canyon (11.17.16)
REB	9	vs. Syracuse (3.3.17)
AST	13	at North Carolina (2.26.17)
FG	6	2x, last vs. GCU (11.17.16)
FGA	12	4x, last at Florida State (1.8.17)
FG%	1.000 (2-2)	vs. Western Carolina (12.29.15)
3FG	3	4x, last at Boston College (1.22.17)
3FGA	7	2x, last vs. Old Dominion (11.22.16)
FT	5	vs. Virginia (3.3.16)
FTA	8	vs. Virginia (3.3.16)
FT%	1.000 (4-4)	2x, last vs. Old Dominion (11.22.16)
BLK	2	vs. Syracuse (2.10.17)
STL	5	3x, last vs. Louisville (1.2.17)
MIN	40	vs. Texas A&M (11.18.15)

**SEASON HIGHS**

PTS	
REB	
AST	
FG	
FGA	
FG%	
3FG	
3FGA	
FT	
FTA	
FT%	
BLK	
STL	
MIN	

MISC.	SEASON	CAREER
10+ PTS		17
20+ PTS		0
5+ REB		17
10+ REB		0
3+ AST		35
3+ STL		11
20+ MIN		62
Double-Double		1
Triple-Double		0
Led Duke in scoring		2
Led Duke in rebounding		4
Charges taken		9

**2017-18 GAME-BY-GAME**

DATE	OPPONENT	MIN	FG	3FG	FT	O-D-R	A	T	B	S	TP
11.12	at Grand Canyon	-	-	-	-	-	-	-	-	-	-
11.16	High Point	-	-	-	-	-	-	-	-	-	-
11.19	at Villanova	-	-	-	-	-	-	-	-	-	-
11.22	at Old Dominion	-	-	-	-	-	-	-	-	-	-
11.25	Oregon State	-	-	-	-	-	-	-	-	-	-
11.26	Presbyterian	-	-	-	-	-	-	-	-	-	-
11.30	Ohio State	-	-	-	-	-	-	-	-	-	-
12.3	at South Carolina	-	-	-	-	-	-	-	-	-	-
12.7	UNCG	-	-	-	-	-	-	-	-	-	-
12.10	Winthrop										
12.19	Maine										
12.21	Wyoming										
12.31	at Miami										
1.4	at Louisville										
1.7	NC State										
1.11	at Wake Forest										
1.14	Virginia										
1.18	at Virginia Tech										
1.21	at North Carolina										
1.25	Boston College										
1.28	at Pitt										
2.1	Georgia Tech										
2.4	Notre Dame										
2.7	Wake Forest										
2.11	at Clemson										
2.15	at Syracuse										
2.19	Florida State										
2.25	North Carolina										

\* Denotes Started Game; ^ Denotes ACC Tournament; # Denotes NCAA Tournament

**LAMBERT CAREER STATISTICS**

YEAR	GP	GS	MIN	AVG	FG	FGA	PCT	3FG	3FGA	PCT	FT	FTA	PCT	OFF	DEF	REB	AVG	PF	FO	AST	TO	BLK	STL	PTS	AVG
2015-16	32	23	874	27.3	70	184	.380	18	56	.321	40	61	.656	13	75	88	2.8	79	1	79	62	5	36	198	6.2
2016-17	33	33	992	30.1	98	225	.436	23	58	.397	39	53	.736	29	93	122	3.7	44	1	116	58	5	56	258	7.8
2017-18	-	-	-	-	-	-	-	-	-	-	-	-	-	-	-	-	-	-	-	-	-	-	-	-	-
<b>TOTAL</b>	<b>65</b>	<b>56</b>	<b>1866</b>	<b>28.7</b>	<b>168</b>	<b>409</b>	<b>.411</b>	<b>41</b>	<b>114</b>	<b>.360</b>	<b>79</b>	<b>114</b>	<b>.693</b>	<b>42</b>	<b>168</b>	<b>210</b>	<b>3.2</b>	<b>123</b>	<b>2</b>	<b>195</b>	<b>120</b>	<b>10</b>	<b>92</b>	<b>456</b>	<b>7.0</b>



**BEGO FAZ DAVALOS**  
 #21 • C • 6-3 • RSR.  
 San Luis Potosi, Mexico  
 Tecnologico De Monterrey

# #21 BEGO FAZ DAVALOS

**NOTES:**

Graduated from Fresno State in 2017 and will play final year of eligibility at Duke  
 Made her first Duke start against UNC Greensboro

**2017-18 HONORS:**

Preseason ACC Newcomer Watch List

**CAREER HIGHS**

PTS	25	VS. Nevada (3.6.17)
REB	19	3x, last at San Diego State (1.4.17)
AST	7	2x, last at Pacific (12.10.16)
FG	11	2x, last vs. UC Santa Barbara (12.16.16)
FGA	20	2x, last vs. Utah (11.15.16)
FG%	1.000 (5-5)	vs. Utah State (3.4.16)
3FG		
3FGA		
FT	9	vs. New Mexico (2.27.16)
FTA	11	at Weber State (12.19.16)
FT%	1.000 (9-9)	vs. New Mexico (2.27.16)
BLK	10	2x, last vs. CSUN (11.18.16)
STL	5	2x, last at. Nevada (12.31.16)
MIN	38	vs. Nevada (3.6.17)

**SEASON HIGHS**

PTS	6	at South Carolina (12.3.17)
REB	6	VS. UNCG (12.7.17)
AST	2	2x, last vs. UNCG (12.7.17)
FG	3	at South Carolina (12.3.17)
FGA	5	at South Carolina (12.3.17)
FG%	.500 (2-4)	2x, last vs. UNCG (12.7.17)
3FG		
3FGA		
FT	2	at Old Dominion (11.22.17)
FTA	4	at Old Dominion (11.22.17)
FT%	.500 (2-4)	at Old Dominion (11.22.17)
BLK	1	3x, last vs. Presbyterian (11.26.17)
STL	2	at South Carolina (12.3.17)
MIN	18	vs. UNCG (12.7.17)

MISC.	SEASON	CAREER
10+ PTS		59
20+ PTS		10
5+ REB	1	86
10+ REB		46
3+ AST		23
3+ STL		11
20+ MIN		80
Double-Double		37
Triple-Double		2
Led Duke in scoring		0
Led Duke in rebounding		0
Charges taken		0

**2017-18 GAME-BY-GAME**

DATE	OPPONENT	MIN	FG	3FG	FT	O-D-R	A	T	B	S	TP
11.12	at Grand Canyon	12	2-4	0-0	0-3	1-3-4	2	1	0	0	4
11.16	High Point	15	1-2	0-0	0-0	0-3-3	2	2	1	0	2
11.19	at Villanova	5	0-0	0-0	0-0	0-2-2	0	1	0	0	0
11.22	at Old Dominion	14	0-2	0-0	2-4	1-2-3	1	0	1	0	2
11.25	Oregon State	10	0-0	0-0	1-2	1-3-4	1	0	0	0	1
11.26	Presbyterian	8	0-0	0-0	0-0	2-1-3	1	2	1	0	0
11.30	Ohio State	3	0-0	0-0	0-0	0-1-1	0	1	0	0	0
12.3	at South Carolina	9	3-5	0-0	0-0	0-1-1	0	1	0	2	6
12.7	UNCG*	18	2-4	0-0	0-0	2-4-6	2	1	1	0	4
12.10	Winthrop										
12.19	Maine										
12.21	Wyoming										
12.31	at Miami										
1.4	at Louisville										
1.7	NC State										
1.11	at Wake Forest										
1.14	Virginia										
1.18	at Virginia Tech										
1.21	at North Carolina										
1.25	Boston College										
1.28	at Pitt										
2.1	Georgia Tech										
2.4	Notre Dame										
2.7	Wake Forest										
2.11	at Clemson										
2.15	at Syracuse										
2.19	Florida State										
2.25	North Carolina										

\* Denotes Started Game; ^ Denotes ACC Tournament; # Denotes NCAA Tournament

**FAZ DAVALOS CAREER STATISTICS**

YEAR	GP	GS	MIN	AVG	FG	FGA	PCT	3FG	3FGA	PCT	FT	FTA	PCT	OFF	DEF	REB	AVG	PF	FO	AST	TO	BLK	STL	PTS	AVG
2014-15*	33	8	606	18.4	68	152	.447	0	0	.000	31	48	.646	75	133	208	6.3	60	0	33	70	96	30	167	5.1
2015-16*	34	33	999	29.4	178	343	.519	0	0	.000	75	128	.586	107	211	318	9.4	81	1	85	79	136	45	431	12.7
2016-17*	33	32	975	29.5	203	377	.538	0	0	.000	77	148	.520	121	249	370	11.2	65	0	59	72	114	48	483	14.6
2017-18	9	1	94	10.4	8	17	.471	0	0	.000	3	9	.333	7	20	27	3.0	7	0	9	9	4	2	19	2.1
<b>TOTAL</b>	<b>109</b>	<b>74</b>	<b>2674</b>	<b>21.9</b>	<b>457</b>	<b>889</b>	<b>.494</b>	<b>0</b>	<b>0</b>	<b>.000</b>	<b>186</b>	<b>333</b>	<b>.521</b>	<b>310</b>	<b>613</b>	<b>923</b>	<b>7.5</b>	<b>213</b>	<b>1</b>	<b>186</b>	<b>230</b>	<b>350</b>	<b>125</b>	<b>1100</b>	<b>8.6</b>

\* at Fresno State



**REBECCA GREENWELL**  
 #23 • G • 6-1 • RSR.  
 Owensboro, Ky.  
 Owensboro Catholic

# #23 REBECCA GREENWELL

**NOTES:**

Became the first Blue Devil in school history to amass 1,500 points, 600 rebounds and 200 made three-pointers ... played and started in her 100th game (11.16.17)

**2017-18 HONORS:**

- Preseason All-America
- Preseason All-ACC Team
- Ann Meyers Drysdale Award Watch List
- Team Captain
- John R. Wooden Award Candidate

**CAREER HIGHS**

PTS	31	at Pepperdine (11.27.16)
REB	14	at North Carolina (1.25.15)
AST	5	9x, last at Grand Canyon (11.12.17)
FG	11	at Pepperdine (11.27.16)
FGA	21	at Liberty (11.11.16)
FG%	.800 (8-10)	vs. Texas A&M (11.18.15)
3FG	8	at Pepperdine (11.27.16)
3FGA	16	at Pepperdine (11.27.16)
FT	8	at Alabama (11.16.14)
FTA	8	5x, last at Georgia Tech (1.5.17)
FT%	1.000 (8-8)	at Alabama (11.16.14)
BLK	3	vs. Hampton (3.18.17)
STL	7	at Alabama (11.16.14)
MIN	44	at North Carolina (1.25.15)

**SEASON HIGHS**

PTS	22	2x, last vs. Presbyterian (11.26.17)
REB	9	2x, last vs. Oregon State (11.25.17)
AST	5	at Grand Canyon (11.12.17)
FG	8	at Old Dominion (11.22.17)
FGA	17	2x, last vs. Ohio State (11.30.17)
FG%	.800 (8-10)	at Old Dominion (11.22.17)
3FG	6	at Old Dominion (11.22.17)
3FGA	10	2x, last vs. UNCG (12.7.17)
FT	3	vs. Presbyterian (11.26.17)
FTA	5	vs. Presbyterian (11.26.17)
FT%	1.000 (2-2)	at Grand Canyon (11.12.17)
BLK	1	vs. South Carolina (12.3.17)
STL	2	5x, last vs. UNCG (12.7.17)
MIN	38	at South Carolina (12.3.17)

MISC.	SEASON	CAREER
10+ PTS	6	86
20+ PTS	2	27
5+ REB	6	74
10+ REB		12
3+ AST	2	38
3+ STL		24
20+ MIN	9	107
Double-Double		12
Triple-Double		0
Led Duke in scoring	3	37
Led Duke in rebounding	3	28
Charges taken		3

**2017-18 GAME-BY-GAME**

DATE	OPPONENT	MIN	FG	3FG	FT	O-D-R	A	T	B	S	TP
11.12	at Grand Canyon*	37	6-9	5-6	2-2	3-5-8	5	1	0	2	19
11.16	High Point**	31	5-12	0-3	0-0	2-6-8	1	1	0	2	10
11.19	at Villanova*	37	4-14	1-5	0-0	1-5-6	0	1	0	1	9
11.22	at Old Dominion*	34	8-10	6-7	0-0	0-9-9	0	0	0	2	22
11.25	Oregon State*	37	6-17	4-9	1-2	2-7-9	1	1	0	1	17
11.26	Presbyterian*	30	7-13	5-10	3-5	0-3-3	1	1	0	2	22
11.30	Ohio State*	36	7-17	2-4	3-4	1-3-4	1	4	0	2	19
12.3	at South Carolina*	38	3-8	0-2	2-2	2-4-6	2	2	1	2	8
12.7	UNCG*	26	3-10	0-5	1-2	1-2-3	3	1	0	2	7
12.10	Winthrop										
12.19	Maine										
12.21	Wyoming										
12.31	at Miami										
1.4	at Louisville										
1.7	NC State										
1.11	at Wake Forest										
1.14	Virginia										
1.18	at Virginia Tech										
1.21	at North Carolina										
1.25	Boston College										
1.28	at Pitt										
2.1	Georgia Tech										
2.4	Notre Dame										
2.7	Wake Forest										
2.11	at Clemson										
2.15	at Syracuse										
2.19	Florida State										
2.25	North Carolina										

\* Denotes Started Game; ^ Denotes ACC Tournament; # Denotes NCAA Tournament

**GREENWELL CAREER STATISTICS**

YEAR	GP	GS	MIN	AVG	FG	FGA	PCT	3FG	3FGA	PCT	FT	FTA	PCT	OFF	DEF	REB	AVG	PF	FO	AST	TO	BLK	STL	PTS	AVG
2013-14	0	0	0	0.0	0	0	.000	0	0	.000	0	0	.000	0	0	0	0.0	0	0	0	0	0	0	0	0.0
2014-15	34	34	1171	34.4	157	396	.396	72	202	.356	90	114	.789	46	141	187	5.5	54	1	70	107	8	66	476	14.0
2015-16	30	30	1011	33.7	158	357	.443	73	175	.417	63	81	.778	48	129	177	5.9	52	0	63	85	7	45	452	15.1
2016-17	34	34	1143	33.6	187	422	.443	83	208	.399	100	114	.877	57	160	217	6.4	61	0	83	92	8	53	557	16.4
2017-18	9	9	306	34.0	49	110	.445	23	51	.451	12	17	.706	12	44	56	6.2	16	0	14	12	1	16	133	14.8
<b>TOTAL</b>	<b>107</b>	<b>107</b>	<b>3631</b>	<b>33.9</b>	<b>551</b>	<b>1285</b>	<b>.429</b>	<b>251</b>	<b>636</b>	<b>.395</b>	<b>265</b>	<b>326</b>	<b>.813</b>	<b>163</b>	<b>474</b>	<b>637</b>	<b>6.0</b>	<b>183</b>	<b>1</b>	<b>230</b>	<b>296</b>	<b>24</b>	<b>180</b>	<b>1618</b>	<b>15.1</b>



# #25 JADE WILLIAMS

**NOTES:**  
Posted a career-high 6 points against Presbyterian (11.26.17)

**2017-18 HONORS:**

**JADE WILLIAMS**  
#25 • F/C • 6-5 • FR.  
The Colony, Texas  
The Colony

### SEASON/CAREER HIGHS

PTS	6	vs. Presbyterian (11.26.17)
REB	5	vs. High Point (11.16.17)
AST	2	at Villanova (11.19.17)
FG	3	vs. Presbyterian (11.26.17)
FGA	4	3x, last vs. UNCG (12.7.17)
FG%	1.000 (1-1)	at South Carolina (12.3.17)
3FG		
3FGA		
FT	2	at Villanova (11.19.17)
FTA	4	at Villanova (11.19.17)
FT%	.500 (2-4)	at Villanova (11.19.17)
BLK	2	vs. High Point (11.16.17)
STL	1	2x, last vs. Presbyterian (11.26.17)
MIN	15	at Old Dominion (11.22.17)

### MISC. SEASON/CAREER

10+ PTS	
20+ PTS	
5+ REB	1 vs. High Point (11.16.17)
10+ REB	
3+ AST	
3+ STL	
20+ MIN	
Double-Double	
Triple-Double	
Led Duke in scoring	
Led Duke in rebounding	
Charges taken	

### 2017-18 GAME-BY-GAME

DATE	OPPONENT	MIN	FG	3FG	FT	O-D-R	A	T	B	S	TP
11.12	at Grand Canyon	6	0-2	0-0	0-0	1-1-2	0	0	0	0	0
11.16	High Point	14	2-3	0-0	0-0	3-2-5	1	1	2	1	4
11.19	at Villanova	13	0-2	0-0	2-4	4-3-7	2	2	0	0	2
11.22	at Old Dominion	15	2-4	0-0	1-4	1-2-3	1	3	1	0	5
11.25	Oregon State	1	0-1	0-0	0-0	1-0-1	0	1	0	0	0
11.26	Presbyterian	5	3-4	0-0	0-2	0-1-1	1	1	0	1	6
11.30	Ohio State	7	0-1	0-0	0-0	0-1-1	0	1	1	0	0
12.3	at South Carolina	3	1-1	0-0	0-2	2-0-2	0	0	0	0	2
12.7	UNCG	10	3-4	0-0	0-0	0-2-2	0	0	0	0	6
12.10	Winthrop										
12.19	Maine										
12.21	Wyoming										
12.31	at Miami										
1.4	at Louisville										
1.7	NC State										
1.11	at Wake Forest										
1.14	Virginia										
1.18	at Virginia Tech										
1.21	at North Carolina										
1.25	Boston College										
1.28	at Pitt										
2.1	Georgia Tech										
2.4	Notre Dame										
2.7	Wake Forest										
2.11	at Clemson										
2.15	at Syracuse										
2.19	Florida State										
2.25	North Carolina										

\* Denotes Started Game; ^ Denotes ACC Tournament; # Denotes NCAA Tournament

### WILLIAMS CAREER STATISTICS

YEAR	GP	GS	MIN	AVG	FG	FGA	PCT	3FG	3FGA	PCT	FT	FTA	PCT	OFF	DEF	REB	AVG	PF	FO	AST	TO	BLK	STL	PTS	AVG
2017-18	9	0	74	8.2	11	22	.500	0	0	.000	3	12	.250	12	12	24	2.7	14	0	5	9	4	2	25	2.8
<b>TOTAL</b>	<b>9</b>	<b>0</b>	<b>74</b>	<b>8.2</b>	<b>11</b>	<b>22</b>	<b>.500</b>	<b>0</b>	<b>0</b>	<b>.000</b>	<b>3</b>	<b>12</b>	<b>.250</b>	<b>12</b>	<b>12</b>	<b>24</b>	<b>2.7</b>	<b>14</b>	<b>0</b>	<b>5</b>	<b>9</b>	<b>4</b>	<b>2</b>	<b>25</b>	<b>2.8</b>



# #30 EMILY SCHUBERT

NOTES:

2017-18 HONORS:

**EMILY SCHUBERT**  
 #30 • C • 6-4 • RFR.  
 Elizabethton, Tenn.  
 Elizabethton

### SEASON/CAREER HIGHS

PTS		
REB		
AST	1	vs. UNCG (12.7.17)
FG		
FGA		
FG%		
3FG		
3FGA		
FT		
FTA		
FT%		
BLK	1	2x, last vs. Presbyterian (11.26.17)
STL		
MIN	2	3x, last vs. UNCG (12.7.17)

### MISC. SEASON/CAREER

10+ PTS	
20+ PTS	
5+ REB	
10+ REB	
3+ AST	
3+ BLK	
20+ MIN	
Double-Double	
Triple-Double	
Led Duke in scoring	
Led Duke in rebounding	
Charges taken	

### 2017-18 GAME-BY-GAME

DATE	OPPONENT	MIN	FG	3FG	FT	O-D-R	A	T	B	S	TP
11.12	at Grand Canyon	-	-	-	-	-	-	-	-	-	-
11.16	High Point	2	0-0	0-0	0-0	0-0-0	0	0	1	0	0
11.19	at Villanova	-	-	-	-	-	-	-	-	-	-
11.22	at Old Dominion	-	-	-	-	-	-	-	-	-	-
11.25	Oregon State	-	-	-	-	-	-	-	-	-	-
11.26	Presbyterian	2	0-0	0-0	0-0	0-0-0	0	0	1	0	0
11.30	Ohio State	-	-	-	-	-	-	-	-	-	-
12.3	at South Carolina	-	-	-	-	-	-	-	-	-	-
12.7	UNCG	2	0-0	0-0	0-0	0-0-0	1	0	0	0	0
12.10	Winthrop										
12.19	Maine										
12.21	Wyoming										
12.31	at Miami										
1.4	at Louisville										
1.7	NC State										
1.11	at Wake Forest										
1.14	Virginia										
1.18	at Virginia Tech										
1.21	at North Carolina										
1.25	Boston College										
1.28	at Pitt										
2.1	Georgia Tech										
2.4	Notre Dame										
2.7	Wake Forest										
2.11	at Clemson										
2.15	at Syracuse										
2.19	Florida State										
2.25	North Carolina										

\* Denotes Started Game; ^ Denotes ACC Tournament; # Denotes NCAA Tournament

### SCHUBERT CAREER STATISTICS

YEAR	GP	GS	MIN	AVG	FG	FGA	PCT	3FG	3FGA	PCT	FT	FTA	PCT	OFF	DEF	REB	AVG	PF	FO	AST	TO	BLK	STL	PTS	AVG
2016-17	0	0	0	0.0	0	0	.000	0	0	.000	0	0	.000	0	0	0	0.0	0	0	0	0	0	0	0	0.0
2017-18	3	0	6	2.0	0	0	.000	0	0	.000	0	0	.000	0	0	0	0.0	1	0	1	0	2	0	0	0.0
<b>TOTAL</b>	<b>3</b>	<b>0</b>	<b>6</b>	<b>2.0</b>	<b>0</b>	<b>0</b>	<b>.000</b>	<b>0</b>	<b>0</b>	<b>.000</b>	<b>0</b>	<b>0</b>	<b>.000</b>	<b>0</b>	<b>0</b>	<b>0</b>	<b>0.0</b>	<b>1</b>	<b>0</b>	<b>1</b>	<b>0</b>	<b>2</b>	<b>0</b>	<b>0</b>	<b>0.0</b>



# #32 JAYDA ADAMS

NOTES:

2017-18 HONORS:

**JAYDA ADAMS**  
 #32 • G • 6-0 • FR.  
 Irvine, Calif.  
 Mater Dei

**SEASON/CAREER HIGHS**

PTS	2	vs. High Point (11.16.17)
REB	2	vs. Presbyterian (11.26.17)
AST	2	at Old Dominion (11.22.17)
FG	1	vs. High Point (11.16.17)
FGA	2	vs. High Point (11.16.17)
FG%	.500 (1-2)	vs. High Point (11.16.17)
3FG		
3FGA	1	3x, last vs. Presbyterian (11.26.17)
FT		
FTA		
FT%		
BLK		
STL	1	3x, last vs. UNCG (12.7.17)
MIN	10	vs. Presbyterian (11.26.17)

**MISC. SEASON/CAREER**

10+ PTS	
20+ PTS	
5+ REB	
10+ REB	
3+ AST	
3+ BLK	
20+ MIN	
Double-Double	
Triple-Double	
Led Duke in scoring	
Led Duke in rebounding	
Charges taken	

**2017-18 GAME-BY-GAME**

DATE	OPPONENT	MIN	FG	3FG	FT	O-D-R	A	T	B	S	TP
11.12	at Grand Canyon	5	0-0	0-0	0-0	0-0-0	0	3	0	0	0
11.16	High Point	8	1-2	0-1	0-0	0-1-1	0	0	0	1	2
11.19	at Villanova	5	1-1	0-0	0-0	1-0-1	0	0	0	0	2
11.22	at Old Dominion	7	0-2	0-1	0-0	0-0-0	2	0	0	0	0
11.25	Oregon State	1	0-0	0-0	0-0	0-0-0	0	0	0	0	0
11.26	Presbyterian	10	0-1	0-1	0-0	1-1-2	0	0	0	1	0
11.30	Ohio State	1	0-0	0-0	0-0	0-0-0	0	0	0	0	0
12.3	at South Carolina	4	0-1	0-0	0-0	0-0-0	0	0	0	0	0
12.7	UNCG	6	0-1	0-1	0-2	0-0-0	0	0	0	1	0
12.10	Winthrop										
12.19	Maine										
12.21	Wyoming										
12.31	at Miami										
1.4	at Louisville										
1.7	NC State										
1.11	at Wake Forest										
1.14	Virginia										
1.18	at Virginia Tech										
1.21	at North Carolina										
1.25	Boston College										
1.28	at Pitt										
2.1	Georgia Tech										
2.4	Notre Dame										
2.7	Wake Forest										
2.11	at Clemson										
2.15	at Syracuse										
2.19	Florida State										
2.25	North Carolina										

\* Denotes Started Game; ^ Denotes ACC Tournament; # Denotes NCAA Tournament

**ADAMS CAREER STATISTICS**

YEAR	GP	GS	MIN	AVG	FG	FGA	PCT	3FG	3FGA	PCT	FT	FTA	PCT	OFF	DEF	REB	AVG	PF	FO	AST	TO	BLK	STL	PTS	AVG
2017-18	9	0	47	5.2	2	8	.250	0	4	.000	0	2	.000	2	2	4	0.4	8	0	2	3	0	3	4	0.4
TOTAL	9	0	47	5.2	2	8	.250	0	4	.000	0	2	.000	2	2	4	0.4	8	0	2	3	0	3	4	0.4



**ERIN MATHIAS**  
 #35 • F/C • 6-4 • SR.  
 Pittsburgh, Pa.  
 Fox Chapel Area

# #35 ERIN MATHIAS

**NOTES:**

Tallied her first career double-double against Grand Canyon (11.12.17) ... Had a double-double against No. 8 Ohio State (10 points/10 boards) ... Posted a career-high 24 points versus UNC Greensboro (12.7.17)

**2017-18 HONORS:**

**CAREER HIGHS**

PTS	24	vs. UNCG (12.7.17)
REB	10	3x, last vs. Ohio State (11.30.17)
AST	6	at Boston College (1.22.17)
FG	12	vs. UNCG (12.7.17)
FGA	18	vs. UNCG (12.7.17)
FG%	1.000 (4-4)	at Long Beach State (11.25.16)
3FG		
3FGA	1	2x, last vs. Oregon (3.20.17)
FT	5	vs. Buffalo (11.25.14)
FTA	6	vs. Grand Canyon (11.17.16)
FT%	1.000 (5-5)	vs. Buffalo (11.25.14)
BLK	2	8x, last vs. UNCG (12.7.17)
STL	3	3x, last vs. Presbyterian (11.26.17)
MIN	35	vs. Ohio State (11.30.17)

**SEASON HIGHS**

PTS	24	vs. UNCG (12.7.17)
REB	10	2x, last vs. Ohio State (11.30.17)
AST	4	vs. Ohio State (11.30.17)
FG	12	vs. UNCG (12.7.17)
FGA	18	vs. UNCG (12.7.17)
FG%	.778 (7-9)	at South Carolina (12.3.17)
3FG		
3FGA		
FT	2	at Grand Canyon (11.12.17)
FTA	2	at Grand Canyon (11.12.17)
FT%	1.000 (2-2)	at Grand Canyon (11.12.17)
BLK	2	4x, last vs. UNCG (12.7.17)
STL	3	vs. Oregon State (11.25.17)
MIN	35	vs. Ohio State (11.30.17)

MISC.	SEASON	CAREER
10+ PTS	5	8
20+ PTS	1	1
5+ REB	5	21
10+ REB	2	3
3+ AST	2	5
3+ BLK		0
20+ MIN	7	18
Double-Double	2	2
Triple-Double		0
Led Duke in scoring	1	1
Led Duke in rebounding	2	3
Charges taken	1	6

**2017-18 GAME-BY-GAME**

DATE	OPPONENT	MIN	FG	3FG	FT	O-D-R	A	T	B	S	TP
11.12	at Grand Canyon*	32	5-11	0-0	2-2	6-4-10	1	2	0	2	12
11.16	High Point*	23	5-10	0-0	1-2	3-4-7	0	1	2	0	11
11.19	at Villanova*	25	2-5	0-0	1-2	2-4-6	2	1	0	1	5
11.22	at Old Dominion*	28	3-6	0-0	1-2	3-3-6	1	2	1	0	7
11.25	Oregon State*	29	3-6	0-0	0-0	0-1-1	3	1	0	3	6
11.26	Presbyterian*	13	0-3	0-0	0-0	1-1-2	2	3	2	0	0
11.30	Ohio State*	35	5-8	0-0	0-0	4-6-10	4	4	1	0	10
12.3	at South Carolina*	29	7-9	0-0	2-2	2-4-6	1	2	2	0	16
12.7	UNCG*	32	12-18	0-0	0-0	1-2-3	1	1	2	2	24
12.10	Winthrop										
12.19	Maine										
12.21	Wyoming										
12.31	at Miami										
1.4	at Louisville										
1.7	NC State										
1.11	at Wake Forest										
1.14	Virginia										
1.18	at Virginia Tech										
1.21	at North Carolina										
1.25	Boston College										
1.28	at Pitt										
2.1	Georgia Tech										
2.4	Notre Dame										
2.7	Wake Forest										
2.11	at Clemson										
2.15	at Syracuse										
2.19	Florida State										
2.25	North Carolina										

\* Denotes Started Game; ^ Denotes ACC Tournament; # Denotes NCAA Tournament

**MATHIAS CAREER STATISTICS**

YEAR	GP	GS	MIN	AVG	FG	FGA	PCT	3FG	3FGA	PCT	FT	FTA	PCT	OFF	DEF	REB	AVG	PF	FO	AST	TO	BLK	STL	PTS	AVG
2014-15	27	0	235	8.7	16	43	.372	0	1	.000	12	20	.600	11	42	53	2.0	27	0	6	11	3	5	44	1.6
2015-16	30	3	252	8.4	21	56	.375	0	0	.000	12	21	.571	20	31	51	1.7	27	0	14	19	10	2	54	1.8
2016-17	34	6	565	16.6	52	130	.400	0	1	.000	28	39	.718	42	75	117	3.4	65	0	39	38	20	20	132	3.9
2017-18	9	9	246	27.3	42	76	.553	0	0	.000	7	10	.700	22	29	51	5.7	18	1	15	17	10	8	91	10.1
<b>TOTAL</b>	<b>100</b>	<b>18</b>	<b>1298</b>	<b>13.0</b>	<b>131</b>	<b>305</b>	<b>.430</b>	<b>0</b>	<b>2</b>	<b>.000</b>	<b>59</b>	<b>90</b>	<b>.656</b>	<b>95</b>	<b>177</b>	<b>272</b>	<b>2.7</b>	<b>137</b>	<b>1</b>	<b>74</b>	<b>85</b>	<b>43</b>	<b>35</b>	<b>321</b>	<b>3.2</b>



**MADISON TREECE**  
 #44 • F • 6-4 • FR.  
 St. Peters, Mo.  
 Rock Bridge

# #44 MADISON TREECE

**NOTES:**

Posted a career-high five points in a career-high 18 minutes against Presbyterian (11.26.17)

**2017-18 HONORS:**

**SEASON/CAREER HIGHS**

PTS	5	vs. Presbyterian (11.26.17)
REB	2	vs. UNCG (12.7.17)
AST	1	vs. UNCG (12.7.17)
FG	2	vs. Presbyterian (11.26.17)
FGA	3	vs. Presbyterian (11.26.17)
FG%	.667 (2-3)	vs. Presbyterian (11.26.17)
3FG		
3FGA		
FT	2	at Old Dominion (11.22.17)
FTA	4	at Old Dominion (11.22.17)
FT%	1.000 (1-1)	vs. Presbyterian (11.26.17)
BLK	1	at Old Dominion (11.22.17)
STL		
MIN	18	vs. Presbyterian (11.26.17)

**MISC. SEASON CAREER**

10+ PTS		
20+ PTS		
5+ REB		
10+ REB		
3+ AST		
3+ BLK		
20+ MIN		
Double-Double		
Triple-Double		
Led Duke in scoring		
Led Duke in rebounding		
Charges taken		

**2017-18 GAME-BY-GAME**

DATE	OPPONENT	MIN	FG	3FG	FT	O-D-R	A	T	B	S	TP
11.12	at Grand Canyon	2	0-0	0-0	0-0	0-0-0	0	0	0	0	0
11.16	High Point	3	0-2	0-0	0-0	0-0-0	0	0	0	0	0
11.19	at Villanova	-	-	-	-	-	-	-	-	-	-
11.22	at Old Dominion	3	0-1	0-0	2-4	1-0-1	0	0	1	0	2
11.25	Oregon State	1	0-0	0-0	0-0	0-0-0	0	0	0	0	0
11.26	Presbyterian	18	2-3	0-0	1-1	1-0-1	0	1	0	0	5
11.30	Ohio State	-	-	-	-	-	-	-	-	-	-
12.3	at South Carolina	12	0-3	0-1	0-0	0-1-1	0	0	0	0	0
12.7	UNCG	6	1-2	0-0	0-0	0-2-2	1	0	0	0	2
12.10	Winthrop										
12.19	Maine										
12.21	Wyoming										
12.31	at Miami										
1.4	at Louisville										
1.7	NC State										
1.11	at Wake Forest										
1.14	Virginia										
1.18	at Virginia Tech										
1.21	at North Carolina										
1.25	Boston College										
1.28	at Pitt										
2.1	Georgia Tech										
2.4	Notre Dame										
2.7	Wake Forest										
2.11	at Clemson										
2.15	at Syracuse										
2.19	Florida State										
2.25	North Carolina										

\* Denotes Started Game; ^ Denotes ACC Tournament; # Denotes NCAA Tournament

**TREECE CAREER STATISTICS**

YEAR	GP	GS	MIN	AVG	FG	FGA	PCT	3FG	3FGA	PCT	FT	FTA	PCT	OFF	DEF	REB	AVG	PF	FO	AST	TO	BLK	STL	PTS	AVG
2017-18	7	0	45	6.4	3	11	.273	0	1	.000	3	5	.600	2	3	5	0.7	7	0	1	1	1	0	9	1.3
TOTAL	7	0	45	6.4	3	11	.273	0	1	.000	3	5	.600	2	3	5	0.7	7	0	1	1	1	0	9	1.3